



NO. 5: 2019/20 Cropping Season

Review for November 11-20, 2019 and Outlook for November 21 - 30, 2019

HIGHLIGHTS

- During November 11-20, 2019, weeding was the major activity over much of the bimodal areas.
- Msimu rains has started in Kigoma, Rukwa and Tabora where farmers are mostly engaged in planting activities
- Due to prolonged dry conditions over most parts of Iringa , Ruvuma, Njombe, Mtwara, lindi, Dodoma, Singida, Longido and Kiteto areas, livestock keepers are advised to make good use of the available water and pastures.

**SYNOPTIC SUMMARY DURING
NOVEMBER 11-20, 2019**

During this dekad, generally the Azores and Siberian high pressure systems intensified while the St. Helena and Mascarene high pressure systems relaxed and drove the movement of the Inter Tropical Convergence Zone (ITCZ) towards southern hemisphere. However, the presence of the depression over the south west Madagascar weakened the ITCZ over much parts of the country. This scenario had less influence on the rainfall making mechanisms over much parts of the country. Sea surface temperatures (SSTs) were neutral to slight warm over the south west indian Ocean and south east Atlantic Ocean (near Angola coast).

**RAINFALL PERFORMANCE DURING
NOVEMBER 11 - 20, 2019**

During this dekad the weather systems above, favored moderate rain showers over the lake Victoria basin, western parts, northeastern and northern coast. Some areas over the central parts, northeastern highlands, southwestern highlands and southern regions experienced light rain showers. The significant amount of rainfall recorded ranged from 26 mm and above 250 mm as described by the Figure below.

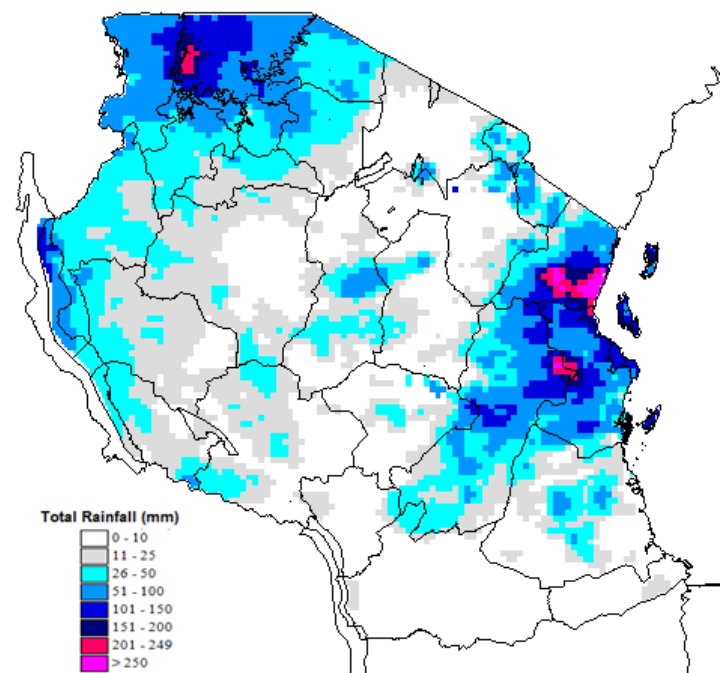


Figure 1. Total rainfall for the period of November 11-20, 2019

**AGROMETEOROLOGICAL SUMMARY
DURING NOVEMBER 11 - 20, 2019**

Improved soil moisture condition was experienced in most areas of the country. For the early planted crops, weeding was the major activity in many places of the lake Victoria basin,

northeastern highlands and northern coast. Crops over Lake Victoria basin, northeastern highlands and northern coast are in good condition at ninth leaf for maize and budding for beans. For the unimodal area, *Msimu* rainy season has started in some areas of Rukwa, Kigoma and Tabora where farmers are mostly engaged in planting activities. For the remaining unimodal areas specifically southern regions farmers are continuing with land preparation while waiting for *Msimu* season expected to start between the fourth week of November and second week of December 2019. However, water and pasture availability for livestock remain low over most parts of ,Iringa, Ruvuma, Njome, Mtwara, Lindi Dodoma, Singida, Longido and Kiteto due to prolonged dry conditions.

HYDROMETEOROLOGICAL REVIEW DURING NOVEMBER 11-20 2019

Water levels in dams and river flow discharges had improved slightly specifically in some areas over bimodal rainfall regime due to ongoing “*Vuli*” rains.

EXPECTED SYNOPTIC CONDITIONS DURING NOVEMBER 21-30, 2019

During this period, generally the Azores and Siberian high pressure systems are expected to continue intensifying while the St. Helena and Mascarene high pressure systems are expected to relax and continue to drive the movement of the ITCZ towards southern hemisphere. The Madden Julian Oscillation (MJO) is expected to be in active phase fostering enhanced weather activities at times mainly over the Lake Victoria Basin, western sector, south western highlands and central part of the country. Sea surface temperatures (SSTs) are expected to be warmer over the south west indian Ocean and south east Atlantic Ocean (near Angola coast) SSTs.

EXPECTED WEATHER CONDITIONS DURING NOVEMBER 21-30 2019

In view of the expected weather, areas around lake Victoria basin (Kagera, Geita, Shinyanga, Mwanza, Simiyu and Mara regions), northeastern highlands (Arusha, Manyara and Kilimanjaro regions), northern coast (Tanga, northern part of Morogoro, Pwani

and Dar es Salaam regions together with isles of Unguja and Pemba), southwestern highlands (Rukwa, Songwe, Mbeya, Njombe and Iringa regions) and western regions (Kigoma, Katavi and Tabora regions) and central areas (Dodoma and Singida regions) are expected to feature moderate rain showers over few areas.

Southern region (Ruvuma and southern part of Morogoro regions) is expected to feature light rain showers over few areas.

Southern coast (Mtwara and Lindi regions) is expected to feature mainly dry conditions.

EXPECTED AGROMETEOROLOGICAL CONDITIONS DURING NOVEMBER 21-30, 2019

The expected rainfall conditions over much of bimodal and some unimodal areas will be favorable for improving soil moisture condition for crops and pastures. Farmers in these areas are advised to continue with routinely farm activities while over the unimodal areas where *Msimu* rains are not yet started are advised to continue with land preparation. However, farmers should always seek professional advice from Agricultural extension officers in their localities and take precautionary measures for their safety and properties against bad weather. Pastoralists are also advised to use the available water and pasture resources sparingly in consultation with livestock extension officers.

EXPECTED HYDROMETEOROLOGICAL CONDITIONS DURING NOVEMBER 21-30 2019

Water levels in dams and river flow discharges are expected to increase over bimodal areas, mainly over lake Victoria, Pangani and Wami/Ruvu water basins. Yet water users are advised to use available water carefully.

Prepared by

TANZANIA METEOROLOGICAL AUTHORITY
3rd Floor - Ubungo Plaza - Morogoro Road.

P.O. Box 3056 Tel. 255 - (0) 22 - 2460706-8; Fax: 255 - (0) 22 - 2460718 E-mail: (1) met@meteo.go.tz (2) agromet@meteo.go.tz; website: www.met@meteo.go.tz

Dar es Salaam UNITED REPUBLIC OF TANZANIA