

DEKADAL WEATHER REVIEW

HIGHLIGHTS

- Above normal rainfall was observed in some places of the country during November 11-20, 2016 whereas some areas including few places of the bimodal area continued to experience below normal rainfall performance.
- The observed rainfall over the bimodal areas was reported to provide good soil moisture mostly for planting, and weeding of early planted maize crop in some places of Kagera, Mwanza and Mara regions.
- Farmers over the bimodal areas are advised to plant early maturing and drought tolerant crops with consultation from Agricultural experts in their localities.
- Over the unimodal areas, farmers are advised to finalize land preparation and acquisition of farm inputs.

No: 5 2016/17 Cropping Season

Review for November 11-20, 2016 and Outlook for November 21-30, 2016

SYNOPTIC SUMMARY DURING NOVEMBER 11-20, 2016

High pressure systems in the southern hemisphere (St. Helena and Mascarene high pressure systems) relaxed slightly, whereas the high pressure systems in the northern hemisphere (Azores and Siberian) slightly intensified. The observed situation caused the Inter-tropical Convergence Zone (ITCZ) to continue shifting southwards. Warm Sea Surface Temperatures (SSTs) were observed over Central Indian Ocean while slightly warm SSTs persisted over the Atlantic Ocean closer to Angola coast. Neutral SSTs were observed over the South-Western Indian Ocean while cool SSTs in the North-West Indian Ocean (closer to Somali coast) were maintained.

RAINFALL PERFORMANCE DURING NOVEMBER 11-20, 2016

In view of the observed synoptic conditions, the country received rainfall in some of the bimodal areas and unimodal areas as shown in Figure 1. Some places of the country experienced above normal rainfall particularly western regions, central areas, north-eastern highlands, Lake Victoria basin, south-western highlands and parts of southern region as depicted in Figure 2. However, some areas of the bimodal area especially in Mwanza and Kagera region as well as Pwani and northern Morogoro regions continued to experience below normal rainfall performance. Below normal rainfall performance was also observed over some of the unimodal areas such as Lindi, Mtwara, southern Morogoro and parts of Ruvuma region.

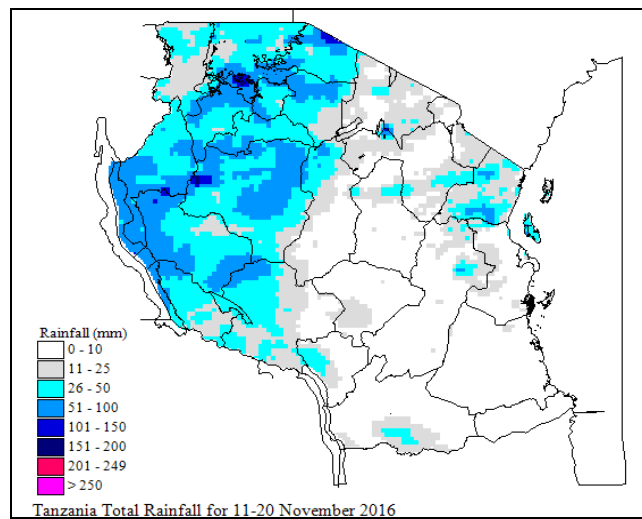


Figure 1: Dekadal total rainfall distribution during November 11-20, 2016

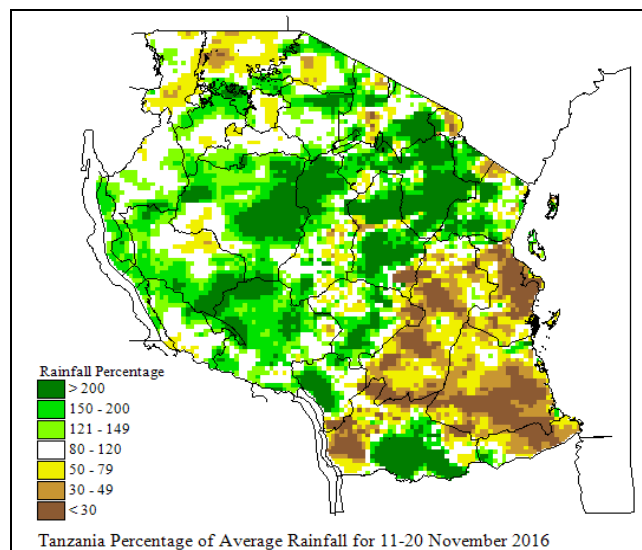


Figure 2: Rainfall performance during November 11-20, 2016 as percentage of long term averages.

AGROMETEOROLOGICAL SUMMARY DURING NOVEMBER 11-20, 2016

The observed rainfall over the bimodal areas was reported to provide good soil moisture which was useful for planting. In some places over Kagera, Mwanza and Mara regions, early planted maize crop was growing well and weeding was going on. Over the unimodal area, farmers were engaged more in land preparation. Pasture conditions were still poor and water availability for animals and wildlife was low over most of the country.

expected. Northern coast (Dar es Salaam, Morogoro and Tanga regions, the isles of Unguja and Pemba): Few isolated light rain showers are expected. Western regions (Kigoma, Katavi and Tabora regions): Few isolated rain showers and thunderstorms are expected. Central areas (Dodoma and Singida regions): Mainly dry conditions are expected. South-western highlands (Rukwa, Iringa, Songwe and Mbeya regions): Mainly dry conditions are expected. Southern Coast (Mtwara and Lindi regions): Mainly dry are expected. Southern region (Njombe and Ruvuma region): Mainly dry conditions are expected.

HYDROLOGICAL CONDITIONS DURING NOVEMBER 11-20, 2016

Water levels in dams and river flow discharges improved slightly especially over the bimodal area due the observed rainfall but were low.

AGROMETEOROLOGICAL OUTLOOK AND ADVISORY DURING NOVEMBER 21-30, 2016

Since planting of crops during *vuli* season delayed in many places of the bimodal areas, farmers are advised to plant early maturing and drought tolerant crops after consultation with agriculture experts in their localities. Over the unimodal areas, farmers are advised to finalize land preparation and acquisition of farm inputs. Pasture conditions and water availability for animals and wildlife will also remain poor during the forecast period. Farmers and livestock keepers are advised to consult Livestock Extension Officers in their localities for optimal use of the available resources.

EXPECTED SYNOPTIC CONDITIONS DURING NOVEMBER 21-30, 2016

Southern hemisphere high pressure systems are expected to continue relaxing while their counterparts to the north are expected to slightly intensify thus allowing the ITCZ to continue moving southwards lying over the Northern parts of the country. Slightly warm SSTs are expected to persist over the Atlantic Ocean closer to Angola coast whereas neutral SSTs are expected over the South-Western Indian Ocean, warm SSTs are expected over the Central Indian Ocean and Cool SSTs are expected in the North-West Indian Ocean (closer to Somali coast).

HYDROMETEOROLOGICAL OUTLOOK AND ADVISORY DURING NOVEMBER 21-30, 2016

Water levels and river flow discharge are expected to continue to be low especially over unimodal areas of the country due to persistent dry conditions.

EXPECTED WEATHER DURING NOVEMBER 21-30, 2016

Lake Victoria Basin (Kagera, Mwanza, Mara, Geita, Simiyu and Shinyanga regions): Few isolated rain showers and thunderstorms are expected. Northeastern highlands (Kilimanjaro, Arusha and Manyara regions): Occasional rain showers are