

DEKADAL WEATHER REVIEW

HIGHLIGHTS

- Most of the country continued to experience below normal rainfall performance during November 1-10, 2016, except areas over Lake Victoria basin and parts of Arusha region which experienced normal to above normal rainfall.
- Pocket areas of above normal rainfall were also observed over Tanga, Lindi, southern Morogoro, Kigoma and Mtwara regions.
- The observed rainfall over Lake Victoria basin was useful for planting and re-planting in places where seeds failed to germinate.
- Farmers over bimodal areas are advised to consult Agricultural experts in their localities for the possibility of planting early maturing and drought tolerant crops due to delayed start of *Vuli* rains.
- Over the rest of the country, farmers are advised to continue with land preparation and acquisition of inputs.

No: 4 2016/17 Cropping Season

Review for November 1-10, 2016 and Outlook for November 11-20, 2016

SYNOPTIC SUMMARY DURING NOVEMBER 1-10, 2016

High pressure systems in the southern hemisphere (St. Helena and Mascarene high pressure systems) relaxed slightly, while their counterparts to the north (Azores and Siberian) slightly intensified. The observed situation caused the Inter-tropical Convergence Zone (ITCZ) to continue shifting southwards. Warm Sea Surface Temperatures (SSTs) were observed over Central Indian Ocean while slightly warm SSTs persisted over the Atlantic Ocean closer to Angola coast. Neutral SSTs were observed over the South-Western Indian Ocean while cool SSTs in the North-West Indian Ocean (closer to Somali coast) were maintained. The relaxation of the southern anticyclones resulted into southeasterly winds which caused few light rains along the coast. This also pushed the meridional arm of the ITCZ Eastwards causing some convective activities over western parts of the country.

RAINFALL PERFORMANCE DURING NOVEMBER 1-10, 2016

Most of the country continued to experience below normal rainfall performance as illustrated in Figure 1. However, *Vuli* rains were observed to feature over some of the bimodal areas whereby normal to above normal rainfall performance was observed over Lake Victoria basin and parts of Arusha region. Pocket areas of above normal rainfall were also observed over Tanga, Lindi, southern Morogoro, Kigoma and Mtwara regions.

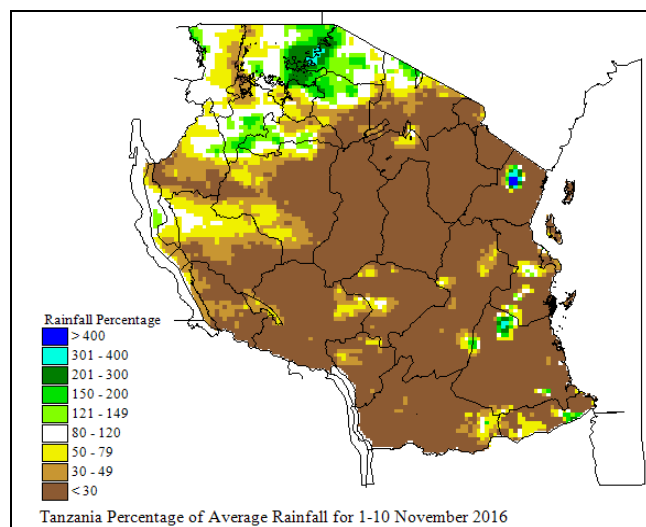


Figure 1: Rainfall performance during November 1-10, 2016 as percentage of long term averages.

AGROMETEOROLOGICAL SUMMARY DURING NOVEMBER 1-10, 2016

Following the rain that was observed over Lake Victoria basin during the period, farmers were engaged in planting and re-planting especially in places where seeds failed to germinate due to prolonged dry spells during previous dekads. In other places of the bimodal area such as Arusha, Tanga and Kilimanjaro regions, farmers were planting early maturing and drought torelant crop varieties such as cassava. Over the rest of the bimodal areas including Pwani and Morogoro regions, farmers were engaged more in land preparation.

**HYDROLOGICAL CONDITIONS
DURING NOVEMBER 1-10, 2016**

Water levels in dams and river flow discharges were low due to the prevailing dry conditions over most places of the country.

**EXPECTED SYNOPTIC CONDITIONS
DURING NOVEMBER 11-20, 2016**

Southern hemisphere high pressure systems are expected to relax significantly while their counterparts to the north are expected to slightly intensify thus allowing the ITCZ to continue moving southwards lying over the Northern parts of the country. However, the ITCZ is expected to remain rather diffuse. Slightly warm SSTs are expected to persist over the Atlantic Ocean closer to Angola coast whereas neutral SSTs are expected over the South-Western Indian Ocean, warm SSTs are expected over the Central Indian Ocean and Cool SSTs are expected in the North-West Indian Ocean (closer to Somali coast). This situation is expected to keep rains far west of the country.

**EXPECTED WEATHER DURING NOVEMBER
11-20, 2016**

Lake Victoria Basin (Kagera, Mwanza, Mara, Geita, Simiyu and Shinyanga regions): Few isolated rain showers and thunderstorms are expected. North-Eastern highlands (Kilimanjaro, Arusha and Manyara regions): Occasional rain showers are expected. Northern coast (Dar es Salaam, Morogoro and Tanga regions, the isles of Unguja and Pemba): Few isolated light rain showers are expected. Western regions (Kigoma, Katavi and Tabora regions): Few isolated rain showers and thunderstorms are expected. Central areas (Dodoma and Singida regions): Mainly dry conditions are expected. South-Western highlands (Rukwa, Iringa, Songwe and Mbeya regions): Mainly dry conditions are expected. Southern coast (Mtwara and Lindi regions): Mainly dry conditions are expected. Southern region (Njombe and Ruvuma region): Mainly dry conditions are expected.

**AGROMETEOROLOGICAL OUTLOOK AND
ADVISORY DURING NOVEMBER 11-20, 2016**

Soil moisture replenishments is expected in some places over Lake Victoria basin, northern coast, and few localized areas in the North-Eastern highlands. Persistent soil moisture deficit will continue over much of bimodal areas. Pasture conditions will remain poor during the forecast period. Farmers and livestock keepers are advised to consult Agricultural and Livestock Extension Officers in their localities for optimal use of the available resources.

**HYDROMETEOROLOGICAL OUTLOOK AND
ADVISORY DURING NOVEMBER 11-20, 2016**

Water levels and river flow discharge are expected to continue declining, especially over unimodal areas of the country due to persistent dry conditions.

Prepared by

TANZANIA METEOROLOGICAL AGENCY

3rd, 4th & 10th Floors - Ubungo Plaza – Morogoro Road.

P.O. Box 3056 Tel. 255 -(0) 22 – 2460706-8 ; Fax: 255 - (0) 22 – 2460718 E-mail: (1) met@meteo.go.tz (2) agromet1_tz@meteo.go.tz

Dar es Salaam UNITED REPUBLIC OF TANZANIA