

DEKADAL WEATHER REVIEW

HIGHLIGHTS

- Seasonal dry conditions continued to prevail across the country during June 21-30, 2016.
- Farmers were mostly engaged with *out of season* activities including crops harvesting in some places, especially over the unimodal area.
- Farmers are advised to continue with *out of season* activities suitable in dry conditions including harvesting and drying of crops.

No: 29. 2015/16 Cropping Season

Review for June 21-30, 2016 and Outlook for July 1-10, 2016

SYNOPTIC SUMMARY DURING JUNE 21-30, 2016

High pressure systems in the southern hemisphere (St. Helena and Mascarene) continued to intensify while their counterparts to the north (Azores and Siberian) continued to relax, causing the Inter-tropical Convergence Zone (ITCZ) to continue moving northwards. For the case of Sea Surface Temperatures (SSTs), warm SSTs were observed over the South-Eastern Atlantic Ocean (closer to Angola coast) while neutral warm SSTs were observed over North-West Indian Ocean (closer to Somali coast). On the other hand, neutral to cool SSTs were observed over South-Western Indian Ocean.

RAINFALL PERFORMANCE DURING JUNE 21-30, 2016

In view of the observed synoptic conditions during the period, seasonal dry conditions continued to prevail in the country as shown in Figure 1 (satellite rainfall estimates from GeoWRSI model merged with gauge data from Tanzania rainfall stations network showing total rainfall distribution during the period). Figure 2 also shows rainfall performance as percentage of long term average whereby a large part of the country experienced normal conditions (white legend in Figure 2). However, below normal conditions (yellow legend) were observed in some areas with few places experiencing above normal conditions (green legend).

TEMPERATURE CONDITIONS DURING JUNE 21-30, 2016

Cold temperature conditions continued to prevail in most places of the country especially north-eastern highlands, central areas and south-western highlands.

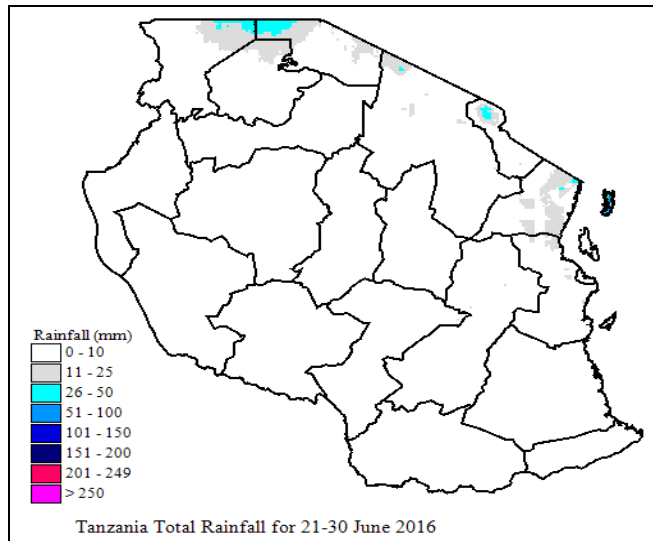


Figure 1: Total rainfall distribution during June 21-30, 2016

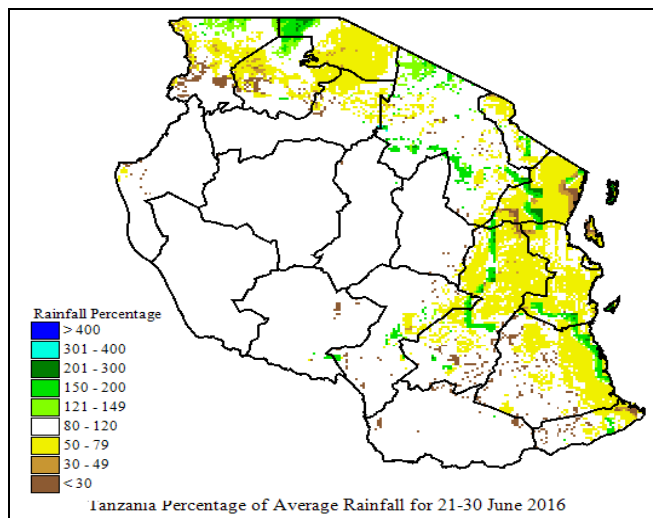


Figure 2: Rainfall performance during June 21-30, 2016 as percentage of long term average.

**AGROMETEOROLOGICAL SUMMARY DURING
JUNE 21-30, 2016**

Farmers were mostly engaged with *out of season* activities including harvesting, especially over the unimodal area where maize crop has already entered full ripeness stage..

Southwestern highlands (Rukwa, Iringa, Songwe and Mbeya regions): mainly dry with few rain showers over high grounds are expected. Southern Coast (Mtwara and Lindi regions): mainly dry with few isolated rain showers are expected. Southern region (Njombe and Ruvuma region): Mainly dry conditions with few rain showers over high grounds are expected.

**HYDROLOGICAL CONDITIONS
DURING JUNE 21-30, 2016**

Water levels in dams and river flow discharges were low due to the prevailing seasonal dry conditions

**AGROMETEOROLOGICAL OUTLOOK AND
ADVISORY DURING JULY 1-10, 2016**

Farmers are advised to continue with *out of season* activities suitable in dry conditions.

**EXPECTED SYNOPTIC CONDITIONS DURING
JULY 1-10, 2016**

During the period, the southern high-pressure systems (St. Helena and Mascarene) are expected to intensify significantly, while their counterparts to the north (Azores and Siberian) are expected to relax and allow the ITCZ to continue moving northward. Neutral to warm SSTs are expected over South-Eastern Atlantic Ocean and North-West Indian Ocean (closer to Somali coast) while neutral to cool SSTs are expected over South-Western Indian Ocean. On the other hand, warm SSTs are expected over Central Indian Ocean. These climatic and synoptic system set-ups are expected to cause strong southerly winds, dry and cool conditions over most parts of the country.

**HYDROLOGICAL OUTLOOK DURING JULY
1-10, 2016**

Hydrological conditions are expected to continue declining in most places of the country due to persistent dry conditions coupled with strong winds.

**EXPECTED WEATHER DURING
JULY 1-10, 2016**

Lake Victoria Basin (Kagera, Mwanza, Mara, Geita, Simiyu and Shinyanga regions): mainly dry conditions with few isolated rain showers and thunderstorms are expected. Northeastern highlands (Kilimanjaro, Arusha and Manyara regions): mainly dry conditions with few isolated rain showers are expected. Northern coast (Dar es Salaam, Morogoro and Tanga regions, the isles of Unguja and Pemba): mainly dry conditions with few isolated light rains are expected. Western regions (Kigoma, Katavi and Tabora regions): Mainly dry conditions with few isolated rain showers -are expected. Central areas (Dodoma and Singida regions): mainly dry conditions with few isolated rain showers are expected

Prepared by

TANZANIA METEOROLOGICAL AGENCY

3rd, 4th & 10th Floors - Ubungo Plaza – Morogoro Road.

P.O. Box 3056 Tel. 255 -(0) 22 – 2460706-8 ; Fax: 255 - (0) 22 – 2460718 E-mail: (1) met@meteo.go.tz (2) agromet1_tz@meteo.go.tz

Dar es Salaam UNITED REPUBLIC OF TANZANIA