

DEKADAL WEATHER REVIEW

HIGHLIGHTS

- Seasonal dry conditions continued to prevail over much of the country during June 1-10, 2016.
- Growing maize crop in highland areas of the bimodal area (Kilimanjaro and Arusha regions) was reported in average condition despite dry conditions.
- With the expected dry conditions during June 11-20, 2016, farmers over the high grounds of Kilimanjaro and Arusha regions are advised to continue monitoring the weather conditions and take appropriate mitigation measures recommended by agricultural extension officers in their localities.

No: 27. 2015/16 Cropping Season

Review for June 1-10, 2016 and Outlook for June 11-20, 2016

SYNOPTIC SUMMARY DURING JUNE 1-10, 2016

High pressure systems in the southern hemisphere (St. Helena and Mascarene) continued to intensify while their counterparts to the north (Azores and Siberian) continued to relax, causing the Inter-tropical Convergence Zone (ITCZ) to continue moving northwards. For the case of Sea Surface Temperatures (SSTs), slightly warm SSTs persisted over the South-Eastern Atlantic Ocean (closer to Angola coast), South-Western Indian Ocean and Central Indian Ocean. Similarly, neutral to warm SSTs were persisted over the North-West Indian Ocean (closer to Somali coast). However, slowly cooling conditions within the Central Indian Ocean towards South-Western Indian Ocean were observed.

RAINFALL PERFORMANCE DURING JUNE 1-10, 2016

In view of the observed synoptic conditions during the period, seasonal dry conditions continued to prevail in the country. The bimodal area experienced mostly below normal where as the unimodal area experienced normal to below normal rainfall performance as shown in Figure 1 below (satellite rainfall estimates from GeoWRSI model merged with gauge data from Tanzania rainfall stations network showing rainfall performance as percentage of long term average).

Note: On Figure 1, green legend indicates above normal whereas brown and yellow legends indicate below normal rainfall performance.

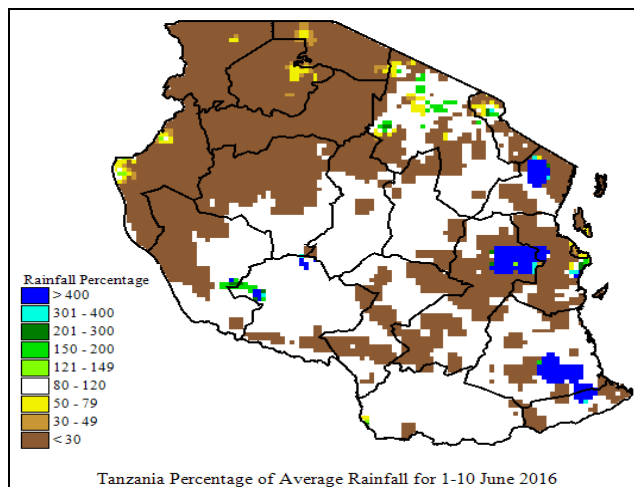


Figure 1: Rainfall performance during June 1-10, 2016 as percentage of long term average.

TEMPERATURE CONDITIONS DURING JUNE 1-10, 2016

Mostly cold conditions prevailed across the country during the period, colder conditions were experienced over higher altitude areas of the country such as north-eastern highlands and south-western highlands.

AGROMETEOROLOGICAL SUMMARY DURING JUNE 1-10, 2016

Growing maize crop over highland areas of the bimodal area (Kilimanjaro and Arusha regions) was reported in average condition despite dry conditions. The cold and calm conditions protected maize crop from wilting but affected growth and development rate. Pasture and water availability for livestock and wildlife was generally average across the country.

HYDROLOGICAL CONDITIONS DURING JUNE 1-10, 2016

Water levels in dams and river flow discharges were moderate across the country.

EXPECTED SYNOPTIC CONDITIONS DURING JUNE 11-20, 2016

During the period, the southern high-pressure systems (St. Helena and Mascarene) are expected to intensify significantly, while their counterparts to the north (Azores and Siberian) are expected to relax and allow the ITCZ to continue moving northward. Warm SSTs are expected to persist over Central Indian Ocean and South-Eastern Atlantic Ocean closer to Angola coast. Similarly, slightly warm to cool SSTs over the South-Western Indian Ocean and neutral to warm SSTs in the North-West Indian Ocean (closer to Somali coast) are expected to persist. These conditions are expected to cause strong southerly winds, dry and cool conditions over most parts of the country.

EXPECTED WEATHER DURING JUNE 11-20, 2016

Lake Victoria Basin (Kagera, Mwanza, Mara, Geita, Simiyu and Shinyanga regions): mainly dry conditions with few isolated rain showers and thunderstorms are expected. Northeastern highlands (Kilimanjaro, Arusha and Manyara regions): mainly dry conditions with few isolated rain showers are expected. Northern coast (Dar es Salaam, Morogoro and Tanga regions, the isles of Unguja and Pemba): mainly dry conditions with few isolated rain showers especially during second half of the dekad are expected. Western regions (Kigoma, Katavi and Tabora regions): mainly dry conditions with few isolated rain showers are expected. Central areas (Dodoma and Singida regions): mainly dry conditions with few isolated rain showers are expected. South-western highlands (Rukwa, Iringa, Songwe and Mbeya regions): mainly dry conditions with few rain showers over high grounds are expected. Southern Coast (Mtwara and Lindi regions): mainly dry with few isolated, rain showers are expected during the period. Southern region (Njombe and Ruvuma region): mainly dry with few rain showers over high grounds are expected.

AGROMETEOROLOGICAL OUTLOOK AND ADVISORY DURING JUNE 11-20, 2016

With the expected dry conditions over most of the country during June 11-20, 2016. Farmers over the high grounds of Kilimanjaro and Arusha regions are advised to continue monitoring the weather conditions and take appropriate mitigation measures recommended by agricultural extension officers in their localities..

HYDROLOGICAL OUTLOOK DURING JUNE 11-20, 2016

Hydrological conditions are expected to be below average in most places of the country due to persistent dry conditions coupled with strong winds.

Prepared by

TANZANIA METEOROLOGICAL AGENCY

3rd, 4th & 10th Floors - Ubungo Plaza - Morogoro Road.

P.O. Box 3056 Tel. 255 -(0) 22 - 2460706-8 ; Fax: 255 - (0) 22 - 2460718 E-mail: (1) met@meteo.go.tz (2) agromet1_tz@meteo.go.tz

Dar es Salaam UNITED REPUBLIC OF TANZANIA