

## DEKADAL WEATHER REVIEW

### HIGHLIGHTS

- Most of the bimodal areas started to receive *masika* season rains during March 1-10, 2016 while the unimodal areas continued to experience seasonal rains.
- Farming activities across the country ranging from land preparation and planting (bimodal areas) to crop growth and development (unimodal areas) were reported to progress well.
- With the expected rainfall in many places of the country during March 11-20, 2016, farmers over the bimodal areas are advised to continue with land preparation and start planting the maize crop whenever soil moisture is adequate to support seed germination.

No: 18. 2015/16 Cropping Season

Review for March 1-10, 2016 and Outlook for March 11-20, 2016

### SYNOPTIC SUMMARY DURING MARCH 1-10, 2016

Pressure systems in the northern hemisphere high pressure systems (Azores and Siberian) relaxed while their counterparts to the southern hemisphere (St. Helena and Mascarene) intensified slightly, allowing the Inter-Tropical Convergence Zone (ITCZ) to slowly start moving north-wards from its extreme position in the southern hemisphere. Warm Sea Surface Temperatures (SSTs) were observed over the eastern Atlantic Ocean closer to Angola coast as well as over the South-Western Indian Ocean. On the other hand, neutral to warm SSTs in the North-West Indian Ocean (closer to Somali coast) were observed; these settings caused convergence of northerly and westerly winds as well as easterly winds that influenced wet conditions over some places of the country.

### RAINFALL PERFORMANCE DURING MARCH 1-10, 2016

As the result of the observed synoptic conditions during the period, *masika* rains were observed to start in most of the bimodal area whereby many places received total rainfall above 20 mm as shown in Figure 1 (Satellite Rainfall Estimates merged with gauge data from Tanzania rainfall stations network showing rainfall performance as percentage of long-term average in the country during the dekad). Similarly, the unimodal areas continued to receive seasonal rains as a result of the synoptic conditions that prevailed during the dekad. The rainfall that was received over the bimodal areas was above normal in most places where as over the unimodal areas it was below normal to normal as shown in Figure 2. NOTE: In figure 2, above normal rainfall is indicated by greenish yellow, deep green and pale blue regends, normal rainfall is indicated by white regend while below normal rainfall is indicated by yellow and brown regends.

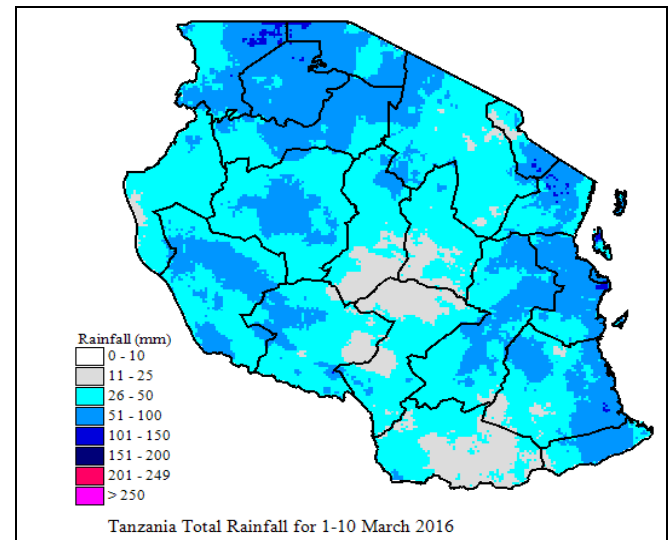


Figure 1: Tanzania total rainfall distribution during March 1-10, 2016

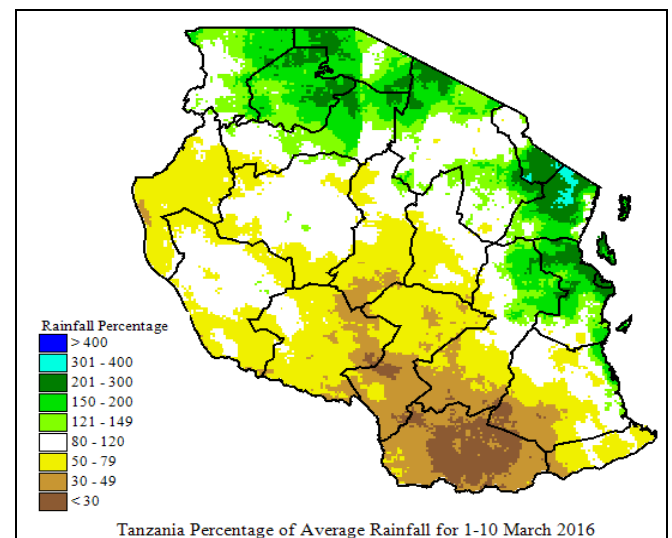


Figure 1: Rainfall performance during March 1-10, 2016 as percentage of long term average.

### TEMPERATURE CONDITIONS DURING MARCH 1-10, 2016

Moderate to high temperature conditions were observed in the country.

### AGROMETEOROLOGICAL SUMMARY DURING MARCH 1-10, 2016

During the period, farming activities were reported to progress well in both the bimodal and unimodal areas of the country. The main activities involving the maize crop over the bimodal areas were land preparation and planting on some areas including Tanga region. Over the unimodal areas, the maize crop was at various stages ranging from flowering stage (south-western highlands) to full ripeness (western regions) and was reported in moderate conditions. Pasture and water availability for livestock and wildlife was moderate over much of the country.

### HYDROLOGICAL CONDITIONS DURING MARCH 1-10, 2016

Water levels in dams and river flow discharges were moderate across of the country.

### EXPECTED SYNOPTIC CONDITIONS DURING MARCH 11-20, 2016

During the period, the northern hemisphere high pressure systems are expected to continue relaxing while their counterparts to the south are expected to intensify which is expected to allow the ITCZ to slowly continue moving northward. Warm SSTs are expected to persist over the eastern Atlantic Ocean closer to Angola coast as well as over the south-Western Indian Ocean. Similarly, slight neutral to warm SSTs in the North-West Indian Ocean (closer to Somali coast) are expected to persist and cause a weak convergence of the northerly and westerly winds and also weak easterly to south-easterly flow.

### EXPECTED WEATHER DURING MARCH 11-20, 2016

Lake Victoria Victoria Basin (Kagera, Mwanza, Mara, Geita, Simiyu and Shinyanga regions): few isolated, rain showers and thunderstorms are expected, especially during the second half of the dekad. North-eastern highlands (Kilimanjaro, Arusha and Manyara regions): few isolated, rain showers and thunderstorms are expected, especially during the first half of the dekad. Northern coast (Dar es Salaam, Morogoro and Tanga regions, the isles of Unguja and Pemba): few isolated, rain showers and thunderstorms are expected, especially during the first half of the dekad. Western regions (Kigoma, Katavi and Tabora regions): rain showers and thunderstorms are expected. Central areas (Dodoma and Singida regions): few isolated, rain showers and thunderstorms are expected, especially during the second half of the dekad. South-western highlands (Rukwa, Iringa and Mbeya regions): few rain showers and thunderstorms are expected. Southern Coast (Mtwara and Lindi regions): few isolated, rain showers and thunderstorms are expected. Southern region (Ruvuma region): few isolated, rain showers and thunderstorms are expected. Due to development of thunderstorms in the Lakes Victoria, Tanganyika and Nyasa, there is a possibility of occurrence of strong winds and large waves (rough waters). Lake users in those areas are advised to take precaution.

### AGROMETEOROLOGICAL OUTLOOK AND ADVISORY DURING MARCH 11-20, 2016

With the expected rainfall in many places of the country during the period, farmers over the unimodal areas should continue with routinely farm activities while over the bimodal areas, farmers are advised to continue with land preparation and start planting the maize crop whenever soil moisture is adequate to support seed germination.. However, farmers should always get consultation from Agricultural Extension Officers in their localities.

### HYDROLOGICAL OUTLOOK DURING MARCH 11-20, 2016

During the period, water levels in dams and river flow in the country are expected to remain moderate.

Prepared by

TANZANIA METEOROLOGICAL AGENCY

3<sup>rd</sup>, 4<sup>th</sup> & 10<sup>th</sup> Floors - Ubungo Plaza - Morogoro Road.

P.O. Box 3056 Tel. 255 -(0) 22 - 2460706-8 ; Fax: 255 - (0) 22 - 2460718 E-mail: (1) [met@meteo.go.tz](mailto:met@meteo.go.tz) (2) [agromet1\\_tz@meteo.go.tz](mailto:agromet1_tz@meteo.go.tz)

Dar es Salaam UNITED REPUBLIC OF TANZANIA