

DEKADAL WEATHER REVIEW

No: 15. 2014/15 Cropping Season

Review for February 1-10, 2015 and Outlook for February 11-20, 2015

HIGHLIGHT

- During *February 1-10, 2014*, seasonal rainfall continued to feature over most of the unimodal areas. Some of the unimodal areas experienced long dry spell durations that affected maize crops.
- Over the bimodal areas, mostly seasonal dry conditions prevailed except some areas around Lake Victoria basin that received off-seasonal rainfall.
- The expected rainfall over the unimodal areas during *February 11-20, 2015* will be useful for crops and pasture development.

SYNOPTIC SUMMARY DURING FEBRUARY 1-10, 2015

During February 1-10, 2015, high pressure systems over the northern hemisphere (Azores and Siberian highs) intensified significantly. In the southern hemisphere, the St Helena high pressure system maintained its strength while the Mascarene high intensified slightly. As a result, the Meridional arm of the Inter-Tropical Convergence Zone (ITCZ) was slightly located in the extreme western part of the country while the zonal arm of the ITCZ moved south wards to extreme southern sector of the country. Neutral to slightly warm sea surface temperature (SST) pattern was observed over the Eastern Indian Ocean and Central Indian Ocean respectively while cool conditions were observed over Western Indian Ocean. The Arabian ridge generally intensified, allowing penetration of the northerly to north-easterly winds towards the Tanzania coastal line and thus influenced less rainfall over most parts of the country (Lake Victoria basin, Central and the coastal regions).

WEATHER SUMMARY DURING FEBRUARY 1-10, 2015

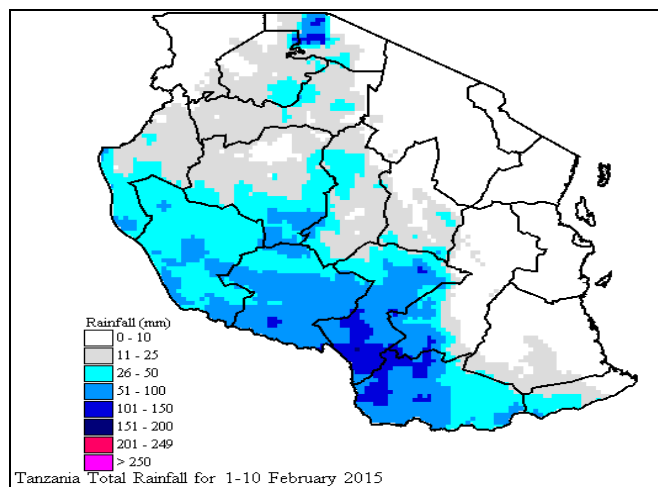


Figure 1: Total rainfall distribution (mm) during February 1-10, 2015.

In view of the observed synoptic conditions during February 1-10, 2015, seasonal rains continued to feature over most of the unimodal areas of the country. However, some of the unimodal areas including Dodoma and Lindi regions experienced dry conditions. The bimodal areas featured mostly seasonal dry conditions except areas around Lake Victoria basin that received out of season rainfall. Figure 1 is Satellite Rainfall Estimates merged with gauge data from Tanzania rainfall stations network showing total rainfall distribution during the period whereby seasonal rainfall is shown to feature well over most of the unimodal areas with exception of some areas experiencing dry conditions. The highest total rainfall was 151-200 mm recorded over Iringa region. However, a large part of the unimodal areas including Southern coast, central areas and parts of western regions received below normal rainfall as shown in Figure 2 (rainfall performance as percentage of long term average during the period). The bimodal areas received mostly below normal rainfall as well except some pocket areas around Lake Victoria basin that received above normal rainfall.

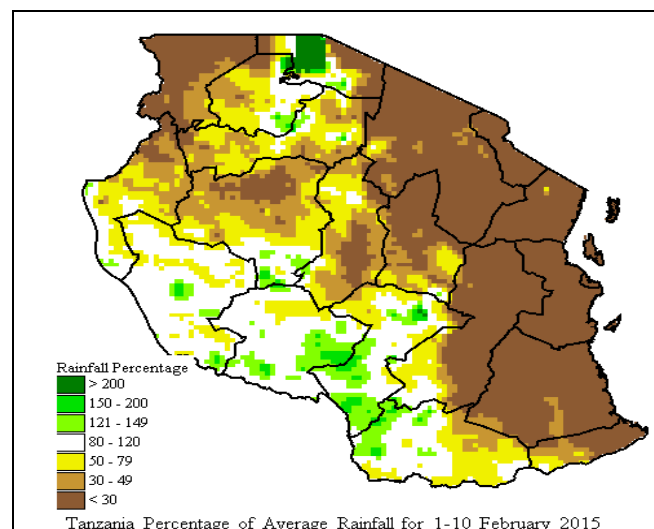


Figure 2: Rainfall performance during February 1-10, 2015 as percentage of long term average.

AGROMETEOROLOGICAL SUMMARY DURING FEBRUARY 1-10, 2015

During February 1-10, 2015, the observed rainfall over the unimodal areas was reported to provide sufficient soil moisture favorable for crops and pasture development. Maize crop over much of western, central areas, southern coast and southern region was entering tasseling stage while over south-western highlands maize crop was at tasseling stage. The crops were reported in moderate condition except in central areas and southern coast (Lindi region) where maize crops were affected by prolonged dry spells. Farm activity during the period included weeding and fertilizer application. Water availability for livestock and wildlife was moderate over much of the country.

HYDROLOGICAL CONDITIONS DURING FEBRUARY 1-10, 2015

Water levels in dams and river flow discharges were moderate over much of the country

ENVIRONMENTAL CONDITIONS DURING FEBRUARY 1-10, 2015

During February 1-10, 2015 moderate to higher temperature conditions prevailed in the country.

EXPECTED SYNOPTIC CONDITIONS DURING FEBRUARY 11-20, 2015

During February 11-20, 2015, the northern hemisphere high pressure systems are expected to continue intensifying whereas their counterparts to the southern hemisphere particularly the Mascarene are expected to maintain their relatively low intensity. This configuration is expected to maintain the ITCZ over unimodal areas of the country, especially over Western, South-western highlands, Southern, Southern coast and central regions of the country.

EXPECTED WEATHER DURING FEBRUARY 11-20, 2015

Lake Victoria Basin (Kagera, Mwanza, Mara, Geita, Simiyu and Shinyanga regions): mainly dry conditions, with periods of occasional thunderstorm and rain showers are expected. North-eastern highlands (Kilimanjaro, Arusha and Manyara regions): mainly dry. Northern coast (Dar es Salaam, Morogoro and Tanga regions, the isles of Unguja and Pemba): mainly dry conditions are expected. Western regions (Kigoma and Tabora regions): normal rains are expected. Central areas (Dodoma and Singida regions): normal to below normal rains are expected. South-western highlands (Rukwa, Iringa and Mbeya regions): normal rains are expected. Southern Coast (Mtwara and Lindi regions): normal rains are expected. Southern region (Ruvuma region): normal rains are expected.

AGROMETEOROLOGICAL OUTLOOK AND ADVISORY DURING FEBRUARY 11-20, 2015

The expected normal rains over the unimodal areas during February 11-20, 2015 will be useful for crops development. However, proper farm management is recommended to salvage the soil moisture available for crops especially over the central areas where below normal rainfall is expected. Farmers are also advised to seek professional advice from nearby Agricultural and livestock extension officers.

HYDROLOGICAL OUTLOOK DURING FEBRUARY 11-20, 2015

During February 11-20, 2015, water levels in dams and river flow discharges are expected to be in moderate condition over the unimodal areas but low over the bimodal areas.

Prepared by

TANZANIA METEOROLOGICAL AGENCY

3rd, 4th & 10th Floors - Ubungo Plaza - Morogoro Road.

P.O. Box 3056 Tel. 255 -(0) 22 - 2460706-8 ; Fax: 255 - (0) 22 - 2460718 E-mail: (1) met@meteo.go.tz (2) agromet1_tz@meteo.go.tz

Dar es Salaam UNITED REPUBLIC OF TANZANIA