

DEKADAL WEATHER REVIEW

No: 04. 2014/15 Cropping Season

Review for October 11-20, 2014 and Outlook for October 21-31, 2014

HIGHLIGHT

- Seasonal rainfall continued to feature over some of the bimodal areas during October 11-20, 2014 and provided favorable conditions for crops growth at emergence stage. Out of season rainfall was also observed over some of the unimodal areas.
- The expected rainfall over the bimodal areas during October 21-31, 2014 will be favorable for crops growth.

SYNOPTIC SUMMARY DURING OCTOBER 11-20, 2014

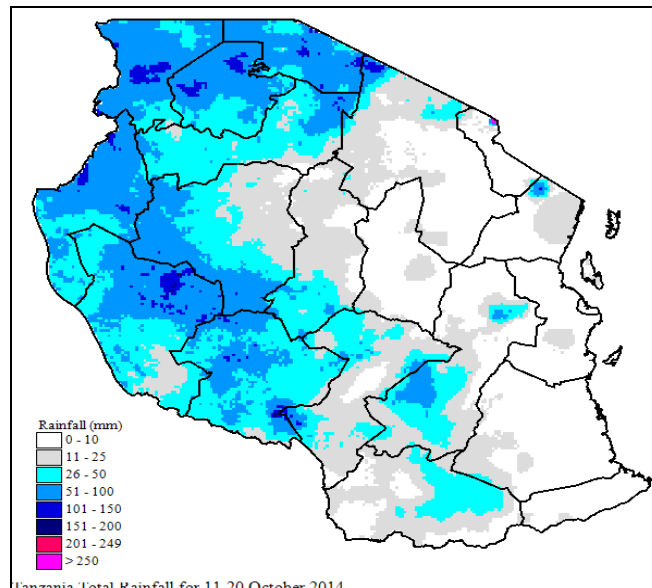
During October 11-20, 2014, high pressure systems over the northern hemisphere intensified slightly, while those in the southern hemisphere relaxed slightly. As a result, the zonal arm of the Inter-Tropical Convergence Zone (ITCZ) moved slightly southward in the horn of Africa while the meridional arm maintained the position in the west. This configuration influenced weather over the north-western, western, south-western and southern parts of the country.

WEATHER SUMMARY DURING OCTOBER 11-20, 2014

During the period under review, seasonal rainfall continued to feature over some of the bimodal areas particularly areas around Lake Victoria basin and northern Kigoma region. However, periods of dry spells were observed over some of the bimodal areas including Arusha, Coast, Manyara, Kilimanjaro and Tanga regions. Out of season rainfall was also observed over some of the unimodal areas including south-western highlands, western, southern region and parts of central areas but the rest of the unimodal areas featured seasonal dry conditions as shown in Figure 1 (Improved Rainfall Estimates from Satellite Rainfall Estimates merged with gauge data from Tanzania rainfall stations network showing total rainfall distribution in the country during the country).

AGROMETEOROLOGICAL SUMMARY DURING OCTOBER 11-20, 2014

During October 11-20, 2014, the observed seasonal rainfall over the bimodal areas provided favourable conditions for crop growth at emergence stage, as reported from Mwanza, Mara, northern Kigoma, Tanga and Kilimanjaro regions. However, long periods of dry spells were observed over Arusha, Coast, Manyara, Kilimanjaro and Tanga regions. Over the unimodal areas, farmers were engaged mainly in land preparation. Water and pasture availability for livestock and wildlife were moderate, but with slight improvement over the bimodal areas due to the prevailing *vuli* rains.



Tanzania Total Rainfall for 11-20 October 2014

Figure 1: Improved Rainfall Estimates from Satellite Rainfall Estimates (RFE) showing total rainfall distribution during October 11-20, 2014

HYDROLOGICAL CONDITIONS DURING OCTOBER 11-20, 2014

Water levels in dams and river flow discharges were moderate but with slight improvement over the bimodal areas due to the prevailing *vuli* rains.

ENVIRONMENTAL CONDITIONS DURING OCTOBER 11-20, 2014

During October 11-20, 2014 relatively warmer temperature conditions prevailed across the country.

EXPECTED SYNOPTIC CONDITIONS DURING OCTOBER 21-31, 2014

During October 21-31, 2014 the two southern hemisphere high pressure systems are expected to start relaxing slightly while the northern hemisphere systems are expected to slowly continue intensifying. However, during the first half of the dekad the southern hemisphere high pressure systems are expected to intensify slightly. The zonal arm of the ITCZ is expected to remain in the northern hemisphere approaching the equator. However, due to expected neutral to warm SSTs over the Angola and Namibia coast, the meridional arm of the ITCZ is expected to slightly retreat westwards and reduce its influence to weather over western parts of the country. Neutral to cool Sea Surface Temperatures (SSTs) are expected to recur over the Somali coast while neutral to slight warm SSTs are expected over the East African coast.

EXPECTED WEATHER DURING OCTOBER 21-31, 2014

Lake Victoria Basin (Kagera, Geita, Mwanza, Mara, Simiyu and Shinyanga regions together with northern Kigoma regions): Frequent thunderstorms, rain showers and periods of strong wind are expected. Northern coast (Dar es Salaam, Morogoro and Tanga regions, the isles of Unguja and Pemba): Rain showers are expected, especially at the beginning and end of the dekad. North Eastern Highlands (Kilimanjaro, Arusha and Manyara regions): Few rain showers are expected. Western regions (Kigoma, Rukwa and Tabora regions): Occasional thunderstorms, rain showers and periods of strong winds are expected. Central areas (Dodoma and Singida regions): Mainly dry conditions are expected. South-western highlands (Southern Rukwa, Katavi, Njombe, Iringa and Mbeya region): Mainly dry conditions, few periods of few rains over high grounds are expected. Periods of strong wind over Rukwa and Katavi regions are also expected. Southern Coast (Mtwara and Lindi regions): Mainly dry conditions, with few rain showers are expected. Southern region (Ruvuma region): Mainly dry conditions with few periods of few rains over high grounds are expected.

AGROMETEOROLOGICAL OUTLOOK AND ADVISORY DURING OCTOBER 21-31, 2014

The expected rainfall over the bimodal areas during October 21-31, 2014 will be favorable for crops growth. Where frequent rainfall has been predicted (Lake Victoria basin), farmers are advised to take precautionary measures against water lodging conditions attributed to rain showers that may damage crops at primary growth stages. Farmers are also advised to seek professional advice from nearby Agricultural extension and livestock officers. Over the unimodal areas, farmers are advised to finalize land preparation and acquisition of farm inputs.

BIMODAL AND UNIMODAL AREAS

- Bimodal areas: Areas which experience two rainfall seasons (Oct - Dec/Jan and March - May). These are areas covering Lake Victoria Basin (Kagera, Geita, Mwanza, Mara, Simiyu and Shinyanga regions including northern parts of Kigoma region), northern coast (Dar es Salaam, Morogoro and Tanga regions together with the Isles of Unguja and Pemba) and northeastern highlands (Kilimanjaro, Arusha and Manyara regions).
- Unimodal areas: Areas which experience one rainfall season (Nov - Apr). These are areas covering western areas (Kigoma, Rukwa, Katavi and Tabora regions), central areas (Dodoma and Singida regions), southwestern highlands (Njombe, Iringa and Mbeya region), southern coast (Mtwara and Lindi regions) and southern areas (Ruvuma region).

Prepared by

TANZANIA METEOROLOGICAL AGENCY

3rd, 4th & 10th Floors - Ubungu Plaza - Morogoro Road.

P.O. Box 3056 Tel. 255 -(0) 22 - 2460706-8 ; Fax: 255 - (0) 22 - 2460718 E-mail: (1) met@meteo.go.tz (2) agromet1_tz@meteo.go.tz

Dar es Salaam UNITED REPUBLIC OF TANZANIA