

## DEKADAL WEATHER REVIEW

No: 26. 2013/14 Cropping Season

Review for May 11-20, 2014 and outlook for May 21-31, 2014

### HIGHLIGHTS

- Rainfall performance over bimodal areas during May 11-20, 2014 was favourable for crops development mostly at advanced growth stages.
- Periods of strong wind are predicted during May 21-31, 2014 over most parts of the country, thus farmers are advised to take precautionary measures for their safety and property.

### SYNOPTIC SUMMARY DURING MAY 11-20, 2014

During May 11-20, 2014 pressure systems over the northern hemisphere relaxed significantly. In the southern hemisphere, the Mascarene high pressure system continued to intensify and extended a ridge over most parts of the country. The ridge was pushing the zonal arm of the Inter-Tropical Convergence Zone (ITCZ), resulting to reduction of rainfall activities over most parts of the country. Moreover, strong winds accompanied with cold air from the southern tip of Africa reduced supply of moisture contributing to the reduction of rainfall.

### WEATHER SUMMARY DURING MAY 11-20, 2014

The country received rainfall mainly over the bimodal areas during this period. Most unimodal areas featured dry conditions with the exception of few pocket areas particularly Tukuyu in Mbeya region that received significant rainfall amounts. Figure 1 below shows rainfall distribution in the country during the dekad as percentage of long-term average rainfall whereby most of the bimodal areas received above normal rainfall.

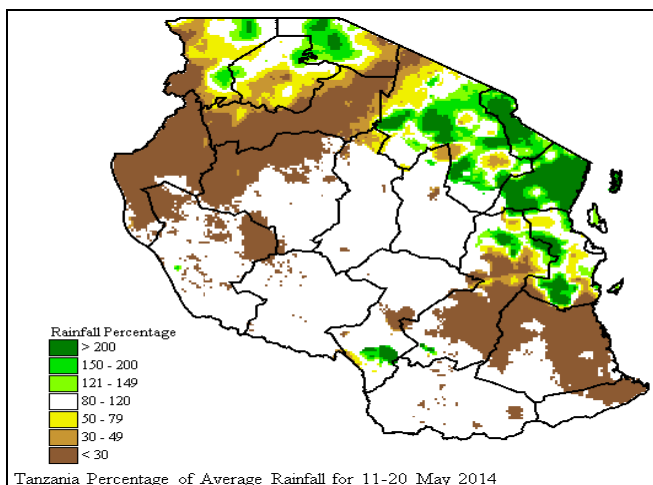


Figure 1a: Rainfall distribution during May 11-20, 2014 as percentage of long term average rainfall.

### AGROMETEOROLOGICAL SUMMARY DURING MAY 11-20, 2014

During the period under review, the rainfall received over the bimodal areas was favourable for crops development mostly at advanced growth stages. Maize crop during the period was mainly at waxy ripeness stage over much of the bimodal areas including Mara, Kilimanjaro, Tanga, Coast and Morogoro regions. The crop was generally in good condition and good harvests are expected. However, periods of heavy rains over some of the bimodal areas including Kilimanjaro region led to flooding and water lodging conditions that damaged crops in the field over few areas. Prolonged dry spell was also reported over western Kagera region particularly Ngara district. Over the unimodal areas, maize crop was at full ripeness stage with good condition. Pastures and water availability for livestock and wildlife was good over much of the country.

### HYDROLOGICAL CONDITIONS DURING MAY 11-20, 2014

Water levels in dams and river flows discharges were generally good over most areas of the country.

### ENVIRONMENTAL CONDITIONS DURING MAY 11-20, 2014

During the period, moderate to cool temperature conditions prevailed in the country.

### EXPECTED SYNOPTIC CONDITIONS DURING MAY 21-31, 2014

During this period, pressure systems over the northern hemisphere are expected to relax significantly while in the southern hemisphere, both the St. Helena and the Mascarene high pressure systems are expected to intensify. With these configurations, the ITCZ is expected to move northwards and be confined mostly in the northern hemisphere. This configuration will influence mainly dry conditions over most parts of the country. On the other hand, the meridional arm of ITCZ is expected to shift

further west into Congo basin resulting to reduced rainfall over western parts of Lake Victoria basin. The intensification of high pressure systems over the southern hemisphere is expected to cause enhanced wind speed regime over most parts of the country. Neutral to warm sea surface temperatures in south west Indian Ocean, close to Tanzanian coast, are expected to induce embedded convection over some areas and therefore influence rainfall activities especially over northern parts of the coast strip.

### EXPECTED WEATHER DURING MAY 21-31, 2014

**L**ake Victoria Basin (Kagera, Geita, Mwanza, Mara, Simiyu and Shinyanga regions including northern parts of Kigoma region): Rain showers and isolated thunderstorms are expected especially during the first half of the dekad. Periods of strong winds are also expected. Northern coast (Dar es Salaam, Morogoro and Tanga regions together with the Isles of Unguja and Pemba): Rain showers are expected over few areas, especially during the first half of the dekad. Periods of strong wind are also expected over few areas. Northeastern highlands (Kilimanjaro, Arusha and Manyara regions): Rain showers are expected over few areas, especially over high grounds during the first half of the dekad. Periods of strong winds are also expected over few areas. Western regions (Kigoma, Rukwa and Tabora regions): Isolated rain showers, and periods of strong wind are expected. Central areas (Dodoma and Singida regions): Periods of strong winds and cool temperatures are expected at times. Southwestern highlands (southern Rukwa, Katavi, Njombe, Iringa and Mbeya region): Few showers are expected, mainly over high grounds. Periods of strong winds and cool temperature conditions are also expected. Southern Coast (Mtwara and Lindi regions): Occasional rain-showers, and periods of strong wind are expected. Southern region (Ruvuma region): Isolated showers and periods of strong winds are expected.

### AGROMETEOROLOGICAL OUTLOOK AND ADVISORY DURING MAY 21-31, 2014

**D**uring the period of May 21-31, 2014, the expected rainfall over the bimodal areas will be useful for crop development at advanced vegetative stages, and increase of pasture and water for animals. However, proper soil water and crop management is recommended particularly over the bimodal areas to salvage soil moisture available for late grown crops. Where thundery showers and strong winds are expected, community is advised to take precautionary measures for their safety and property. Farmers are strongly advised to seek professional advice from nearby agricultural and livestock extension officers.

#### BIMODAL AND UNIMODAL AREAS

1. Bimodal areas: Areas which experience two rainfall seasons (Oct - Dec/Jan and March – May). These are areas covering Lake Victoria Basin (Kagera, Geita, Mwanza, Mara, Simiyu and Shinyanga regions including northern parts of Kigoma region), northern coast (Dar es Salaam, Morogoro and Tanga regions together with the isles of Unguja and Pemba) and northeastern highlands (Kilimanjaro, Arusha and Manyara regions).

2. Unimodal areas: Areas which experience one rainfall season (Nov - Apr). These are areas covering Western regions (Kigoma, Rukwa, Katavi and Tabora regions), central areas (Dodoma and Singida regions), southwestern highlands (Njombe, Iringa and Mbeya region), southern coast (Mtwara and Lindi regions) and southern region (Ruvuma region).

Prepared by

TANZANIA METEOROLOGICAL AGENCY

3<sup>rd</sup>, 4<sup>th</sup> & 10<sup>th</sup> Floors - Ubungo Plaza – Morogoro Road.

P.O. Box 3056 Tel. 255 -(0) 22 – 2460706-8 ; Fax: 255 - (0) 22 – 2460718 E-mail: (1) [met@meteo.go.tz](mailto:met@meteo.go.tz) (2) [agromet1\\_tz@meteo.go.tz](mailto:agromet1_tz@meteo.go.tz)

Dar es Salaam UNITED REPUBLIC OF TANZANIA