

AGROMETEOROLOGICAL BULLETIN

Doc No: TEA 3/3/7/2 F-004

Revision No: 1

Effective Date: 01.07.2017

Page No: 1 of 4

Approved by:

**REPORTING PERIOD:
21 – 31 JANUARY 2018**



ISSUE No.: 12

SEASON: 2017/18

RELEASED: 05/02/2018

CONTENTS

HIGHLIGHTS	1
CONTENTS	1
RAINFALL SYNOPSIS AND PROGNOSIS	1
RAINFALL AND TEMPERATURES	2
RAINFALL	2
TEMPERATURES	2
MAIZE AND OTHER CROPS.....	3
MAIZE CROP STAGE AND CONDITION..	3
OTHER CROPS	3
CURRENT FARMING ACTIVITY	3
LIVESTOCK AND PASTURES	3
WATER SITUATION	3
MEDIUM-TERM OUTLOOK.....	3
RAINFALL	3
TEMPERATURE.....	3
SOIL MOISTURE	3
WIND SPEED	3

HIGHLIGHTS

- Improved rainfall received...
- Improvement in vegetation
- Weeding activities observed....
- Below average rainfall forecasted.....
- Warm to hot temperatures anticipated.....
- Decrease in soil moisture expected.....

RAINFALL SYNOPSIS AND PROGNOSIS

➤ SYNOPSIS - PAST TEN DAYS

Rainfall continued to be below average in this dekad due to the continued subsidence from the upper air high-pressure system that continues to persist with its position over our region.

➤ PROGNOSIS - NEXT TEN DAYS

The Upper Air High Pressure system is anticipated to continue over our region during the next ten days, thus increasing chances of below average rainfall.

Compiled and Issued by: Agrometeorological Unit,
Swaziland Meteorological Service, Ministry of Tourism and Environmental Affairs.

Box 2652, Mbabane, Swaziland. ☎ (+268) 2404 8859 / 2404 6274. Fax: 2404 1530

E-mail: dudu@swazimet.gov.sz

AGROMETEOROLOGICAL BULLETIN

Doc No: TEA 3/3/7/2 F-004
 Revision No: 1
 Effective Date: 01.07.2017
 Page No: 2 of 4
 Approved by:

RAINFALL AND TEMPERATURES

RAINFALL

Improved rainfall was received during the dekad; although still below the long-term mean (Figure 1). This was mostly observed in the southern parts of country (Map 1).

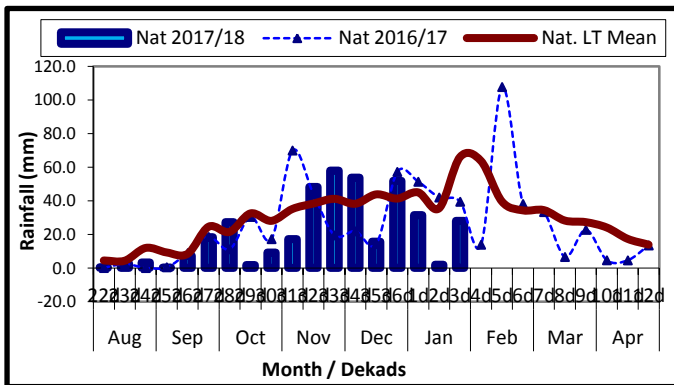
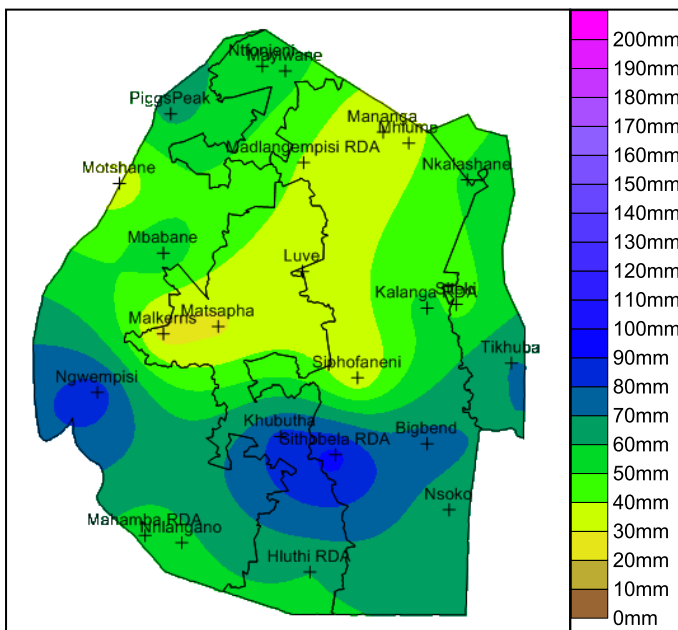


Figure 1: Rainfall distribution as 3rd dekad of January 2018



Map 1: Spatial rainfall distribution for 3rd dekad January 2018

All the agro ecological zones observed rainfall that was below average and that of previous season 2016/17 (Table 1).

Table 1: Rainfall (mm) for 3rd dekad January 2018

	HV	MV	LV	LP
2016/17	50	49	42	16
Average	87	61	52	63
2017/18	54	16	33	10
Anomaly	-33	-46	-20	-53

TEMPERATURES

Most temperatures observed during the reporting period were below average, save for Bigbend which recorded below average maximum and minimum temperatures (Figure 2) and (Figure 3).

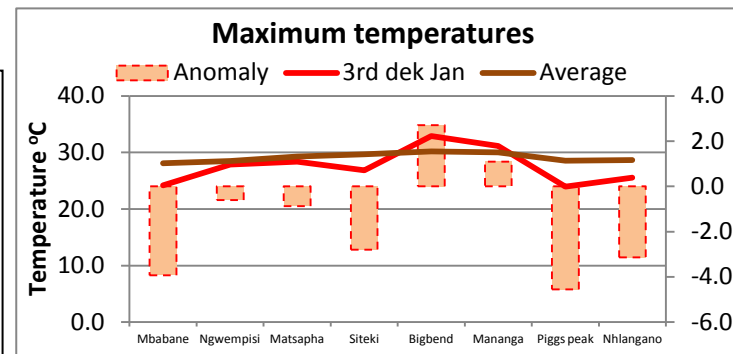


Figure 2: Minimum temperature as 3rd dekad of January 2018

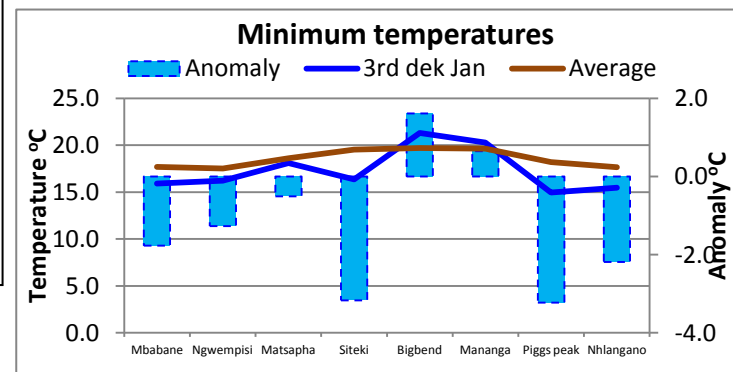


Figure 3: Maximum temperature as 3rd dekad of January 2018

AGROMETEOROLOGICAL BULLETIN

Doc No: TEA 3/3/7/2 F-004

Revision No: 1

Effective Date: 01.07.2017

Page No: 3 of 4

Approved by:

MAIZE AND OTHER CROPS

MAIZE CROP STAGE AND CONDITION

Most maize crops are at vegetative to grain filling stage (**Picture 1**). The crop condition is good mostly in the Highveld and moist Middleveld; however in other parts the crop is not doing well due to inadequate amount of rainfall, especially maize at reproductive stage.

OTHER CROPS

Most legume crops are growing well despite the recent drying effect.

CURRENT FARMING ACTIVITY

Most farmers are busy with weeding activities on their fields (**Picture 2**).



Picture 1: Maize at grain filling stage in Manzini region

LIVESTOCK AND PASTURES

Livestock is reported to be in good condition despite the reports of lumpy skin infestation. Even though rainfall has been below average for the past three dekads, vegetation continues to improve in most parts (**Image 1**).

WATER SITUATION

Bulk water shows signs of decline in some major reservoir dams and rivers in the country. The recent rains have proved insufficient in improving water levels.

MEDIUM-TERM OUTLOOK

RAINFALL

Below average rainfall is forecasted for the outlook period.

TEMPERATURE

Warm to hot temperatures anticipated in the outlook period.

SOIL MOISTURE

A decline in soil moisture is expected in the outlook period.

WIND SPEED

Light breeze speeds will prevail in the outlook period.

AGROMETEOROLOGICAL BULLETIN

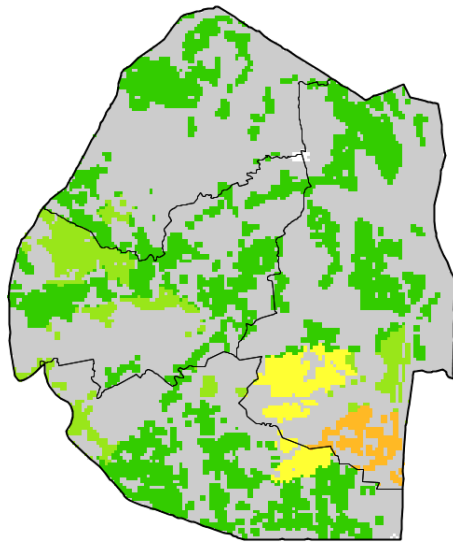
Doc No: TEA 3/3/7/2 F-004

Revision No: 1

Effective Date: 01.07.2017

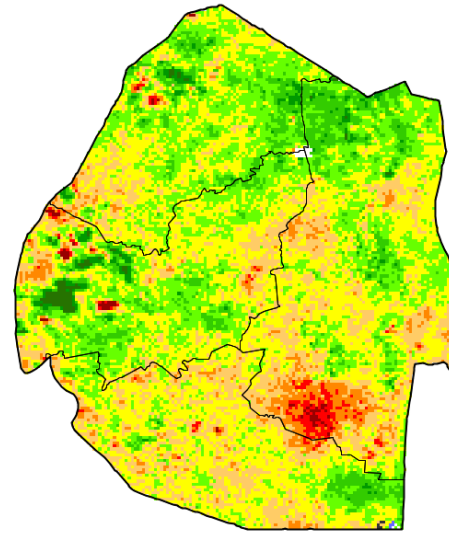
Page No: 4 of 4

Approved by:



Legend

ASI (%)



Legend

Mean VHI

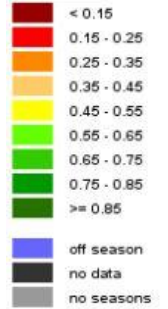


Image 1: Agricultural Stress Index image (3rd Dekad January 2018) *Source: FAO-GIEWS*

Image 2: Mean Vegetation Health Index image (3rd Dekad January 2018) *Source: FAO-GIEWS*