



AGROMETEOROLOGICAL UPDATE

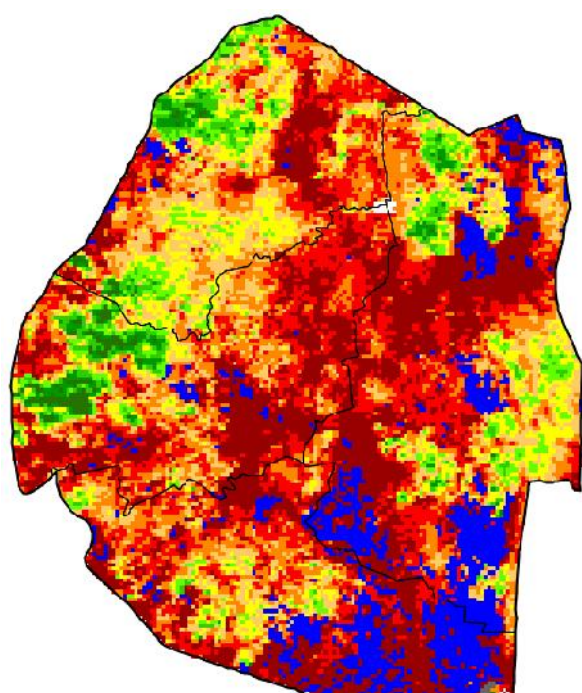


REPORTING PERIOD:
11 – 20 NOVEMBER 2015

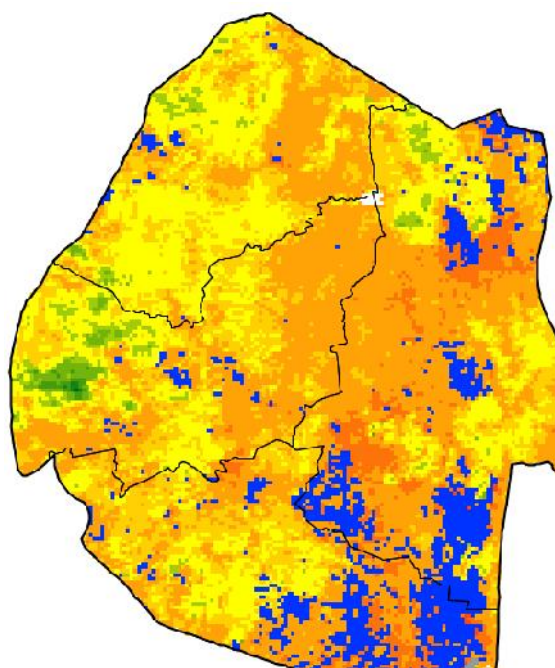
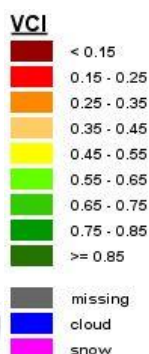
ISSUE No.: 05 SEASON: 2015/16 RELEASED: 25/11/2015

HIGHLIGHTS

- Above average rainfall fell in the country during the dekad...
- **Vegetation remains in a depreciated state....**
- **Some farmers have started land preparation....**
- Below average rainfall expected in the next dekad...
- Warm to hot temperatures forecasted in most parts.....
- Continued decline in soil moisture expected.....
- **About 14,000 cattle reported to have died in the Lowveld so far.....**



Legend



Legend

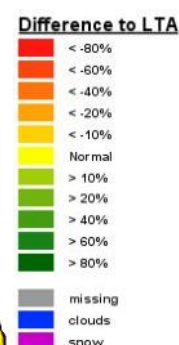


Image 1: Vegetation Condition Index image (2nd Dekad November 2015)

Image 2: Vegetation anomaly image (2nd Dekad November 2015)

MOISTURE AND HEAT STATUS

Rainfall

Slight improvement in recorded rainfall during the second dekad of November (Figure 1), but it still remains much below that of the long-term rainfall and that of last season (2014/15).

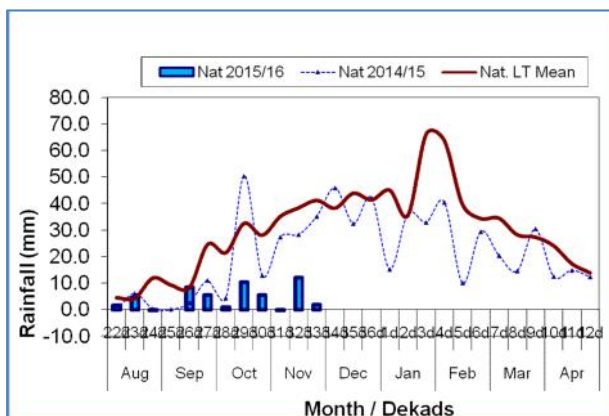
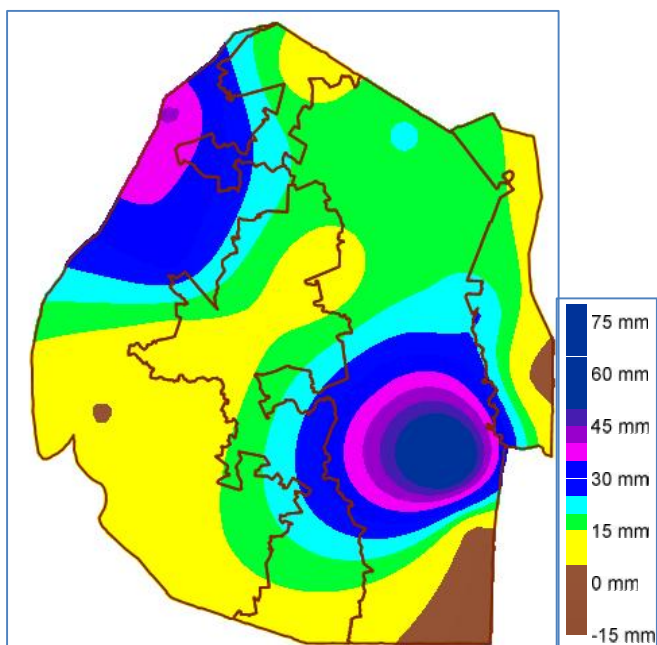


Figure 1: Rainfall distribution as of November 2015



Map 1: Spatial rainfall distribution as of second dekad November 2015

Only a small portion of the Lowveld and extreme north-western parts of the

Highveld received total dekadal rainfall exceeding 30mm (Map 1), otherwise the rest of the country received a total below 20mm.

Table 1: Rainfall (mm) of 2nd dekad November 2015

	HV	MV	LV	LP
2014/15	40	36	26	11
Average	52	35	30	36
2015/16	13	6	17	13
Anomaly	-39	-30	-13	-23

Temperatures

Warm to hot temperatures were experienced throughout the country as most stations recorded above average temperatures (**Table 2 below**).

Table 2: Temperatures (°C) for 2nd Dekad November 2015

Station	Element	2 nd dek November	Average	Depart
Mbabane	Max	No Record	25.9	NR
	Min	15.6	15.2	0.4
Piggs Peak	Max	25.4	26.3	-0.9
	Min	15.5	15.7	-0.2
Ngwempisi	Max	27.4	26.0	1.3
	Min	15.9	14.9	1.0
Matsapha	Max	28.9	26.9	2.0
	Min	18.8	16.0	2.8
Malkerns	Max	27.7	26.0	1.7
	Min	17.8	14.9	2.9
Siteki	Max	28.3	27.1	1.2
	Min	17.8	16.8	1.0
Bigbend	Max	32.4	27.5	4.9
	Min	21.7	17.0	4.7

CROP STATUS

Maize Crop Stage and Condition

There are very few observations of maize at the 3rd leaf stages (Picture 1) in the

Highveld. However, most farmers have not ploughed nor planted in most parts of the country.



Picture 1: Maize at 3rd leaf in Maguga area in the Highveld

Other Crops

No other crops have been planted yet.

Current Farming Activity

Some farmers in the Highveld have started land preparations, while very few have planted maize. Most croplands are subjected to relentless stress (**Image 3**) hence there are currently no cropping activities.

VEGETATION AND LIVESTOCK.

Vegetation continues to show a decline (**Image 1**). The poor grazing conditions coupled with deficiency of livestock drinking water has increased the cattle death toll in the country which is currently reported to be amounting to 14 000 (**Times of Swaziland, 16th November 2015**).

WATER SITUATION

Water shortages continue to worsen as most boreholes are now reported to yield no water and major rivers are drying up. Water levels in major dams in the country are reported to have significantly

decreased 50% - 60%.

Outlook for 26 November – 5 December 2015

Rainfall

Below average rain is expected to fall in most parts of the country in the outlook period.

Temperature

Warmer temperatures are expected during the outlook period.

Soil Moisture

Soil moisture is expected to continue to decline during the outlook period

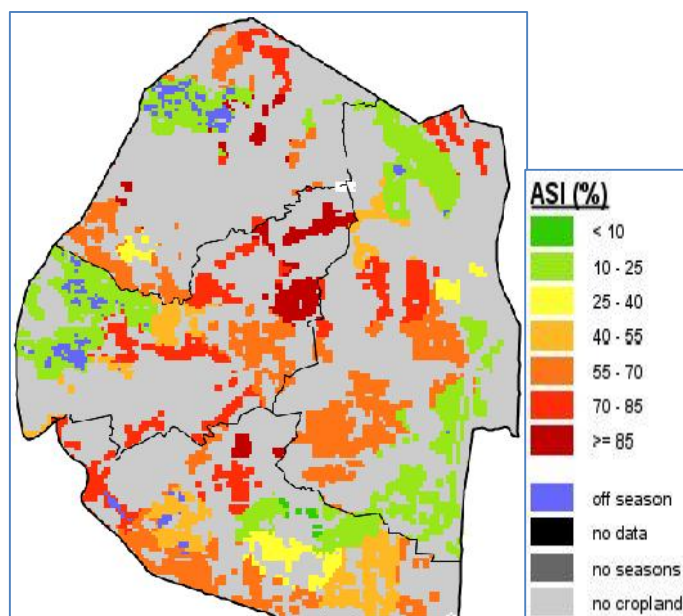


Image 3: Agricultural Stress Index for 2nd Dekad November 2015

Compiled and Issued by: Agrometeorological Unit,

Swaziland Meteorological Service, Ministry of Tourism and Environmental Affairs.

Box 2652, Mbabane, Swaziland. ☎ (+268) 2404 8859 / 2404 6274. Fax: 2404 1530

E-mail: dudu@swazimet.gov.sz

CONTRIBUTORS, PARTNERS AND SOURCES OF INFORMATION

Please Note: This bulletin is issued in support of the efforts by the National Early Warning Office (NEWU) for food Security in the Ministry of Agriculture to provide Swaziland's current agronomic and meteorological developments to users, stakeholders, government authorities and international organizations during the farming season.

The NEWS is currently made-up of a core team of the National Early Warning Unit (NEWU) of Ministry of Agriculture, the Advisory Unit of the National Meteorology Department and the Agricultural Statistics Unit of Central Statistics Office (CSO).