



KMD

# AGROMETEOROLOGICAL BULLETIN

## KENYA METEOROLOGICAL DEPARTMENT

16th Dekad, 1st to 10th June, 2009

Issue No. 16/2009, Season: MJJ

### HIGHLIGHTS

- *During the 16th Dekad i.e. 1st – 10th June 2009, most parts of the country experienced significant reduction in total Dekadal rainfall amounts, except for the Coastal Regions which experienced moderate to heavy rainfall. Western, Nyanza Provinces and Central Rift Valley, except for Kisii which recorded heavy rainfall(89.3mm), experienced light rainfall with Kakamega, Kisii, Kisumu, Kericho, Kitale, Eldoret, Nakuru and Narok recording 6.5, 89.3, 3.6, 14.0,16.1, 6.5, 8.0 and 3.7mm respectively. Central Province, parts of Eastern Province bordering Mt. Kenya, Nairobi Area and its environs experienced light rainfall with Nyeri, Thika, Mwea, Embu, Meru, Dagoretti, JKIA, Wilson Airport and Kabete recording a Dekadal rainfall total of 13.2, 3.0, 9.0, 5.0, 4.0, 34.0, 9.8 and 8.3 mm respectively. Coast Province experienced heavy rainfall with Mombasa, Mtwapa, Mshabaha, Malindi and Lamu recording a Dekadal rainfall total of 60.9, 149.8, 86.8, 57.8, and 67.8mm respectively. The rest of the Country experienced mainly sunny conditions within significant light rains over few places. (Fig 1)*
- *Day time temperatures were relatively warmer due to reduced cloud cover over most parts of the country, with Lodwar, Mandera, Wajir, Garissa, Kakamega, Kisumu, Mwea, Makindu, Dagoretti and Mombasa recording a Dekadal Mean day Maximum of, 36.6, 36.9, 34.7, 33.3, 28.0, 30.3, 28.0, 29.3, 23.2 and 29.7 deg. Celsius respectively. (Fig 2)*
- *Night temperatures were relatively lower over Western and Central Rift Valley, Central Highlands, Nairobi area and its environs due to reduced cloud cover during the Dekad with Nyahururu, Narok, Eldoret Airport, Nyeri, Thika, Kabete and Dagoretti recording a Dekadal mean minimum of 12.1, 6.1, 9.3, 14.1, 14.5, 13.9 and 14.1 deg Celsius respectively. (Figs 1, 2)*

- *The pastoral regions and game parks of Southern Rift Valley, North Eastern, South Eastern Lowlands and the Coastal regions, experienced mainly sunny conditions during the Dekad. Pasture regeneration and animal's health conditions remains generally poor but are both improving gradually. (Figs. 1- 4)*
- *The past rains have improved fodder for livestock, hence an increase in milk production and also availability of fresh vegetables.*

## **CROP AND WEATHER REVIEW**

**(1st to 10th June, 2009)**

### **Central Province and Nairobi Area:**

Light rainfall was experienced over most places in Central province, Nairobi area and its environs experienced during the Dekad. Generally most crops (cash and food crops) are doing well and corresponding to normal growth. The maize crop is at flowering stage, while the bean crop is at the maturity stage. (Fig1&2).

### **Eastern Province:**

Light rainfall was experienced over most places bordering Mt. Kenya (Embu, Runyenjes, Chogoria, Chuka and Meru) during the Dekad. Most crops (cash and food crops) are doing well and corresponding to normal growth. The maize crop is at flowering stage, while the bean crop is at the maturity stage. (Fig1&2)

In the Southern Lowlands of the Eastern Province (Machakos, Makueni, Mwingi and Kitui districts), sunny conditions with light rainfall was experienced over most places during the Dekad. The maize and beans crops are experiencing water stress due to insufficient rainfall. (Fig1&2).

### **Coast Province:**

Heavy rainfall was experienced over several places during the Dekad (Lamu, Malindi, Kwale and Voi). Maize crop is at flowering stages and is doing well with normal yields being expected. (Figs.1-3)

### **North Eastern Province:**

Sunny and dry conditions dominated the region (Mandera, Moyale, Wajir and Garissa) during the Dekad, with light over few places. Pastures regeneration and the animal's health conditions remained generally poor, due insufficient rainfall. (Figs.1, 2, 3 & 4).

Famine/hunger is still being experienced in most places.

### **Western Province:**

Sunny conditions with light rains were experienced over most places of this region (Kakamega, Bungoma, Busia) during the Dekad. Generally most crops (cash and food crops) are doing well and corresponding to normal growth. The maize crop is at shooting stages, while the bean crop is at the flowering stage and both are doing well and corresponding to normal growth. (Figs.1-3).

### **Nyanza and Central Rift Valley:**

Sunny conditions with light rains were experienced over several places in this regions (Kisumu, Nyamira, Kisii, Eldoret, Kitale, Kericho) during the Dekad. The maize and sorghum are at the flowering stages while the bean crop is at maturity. In areas around Kisumu crops have started wilting due to insufficient rainfall and poor yields being expected. (Figs.1-3).

In areas around Eldoret Kapsoya and Kitale the maize and bean crop are at the flowering stages and is stunted, due to insufficient rainfall during the early stages, with poor yields being expected. Other adverse reports indicate the infestation of the maize crop by Maize Stock Borers and the bean crop by Aphids.

In areas around Kisii maize crop is at the flowering stage while the and bean crop is at harvesting stage and both are doing well with normal yields being expected. (Figs.1-3).

### **Northern and Southern Rift Valley:**

Northerwestern Rift Valley (Lodwar, Lokitang) experienced generally sunny and dry conditions with light rains over few places during the Dekad. This has resulted in inadequate pastures water sources for livestock, wildlife and human use leading to death of livestock and wildlife. (Figs.1-4).

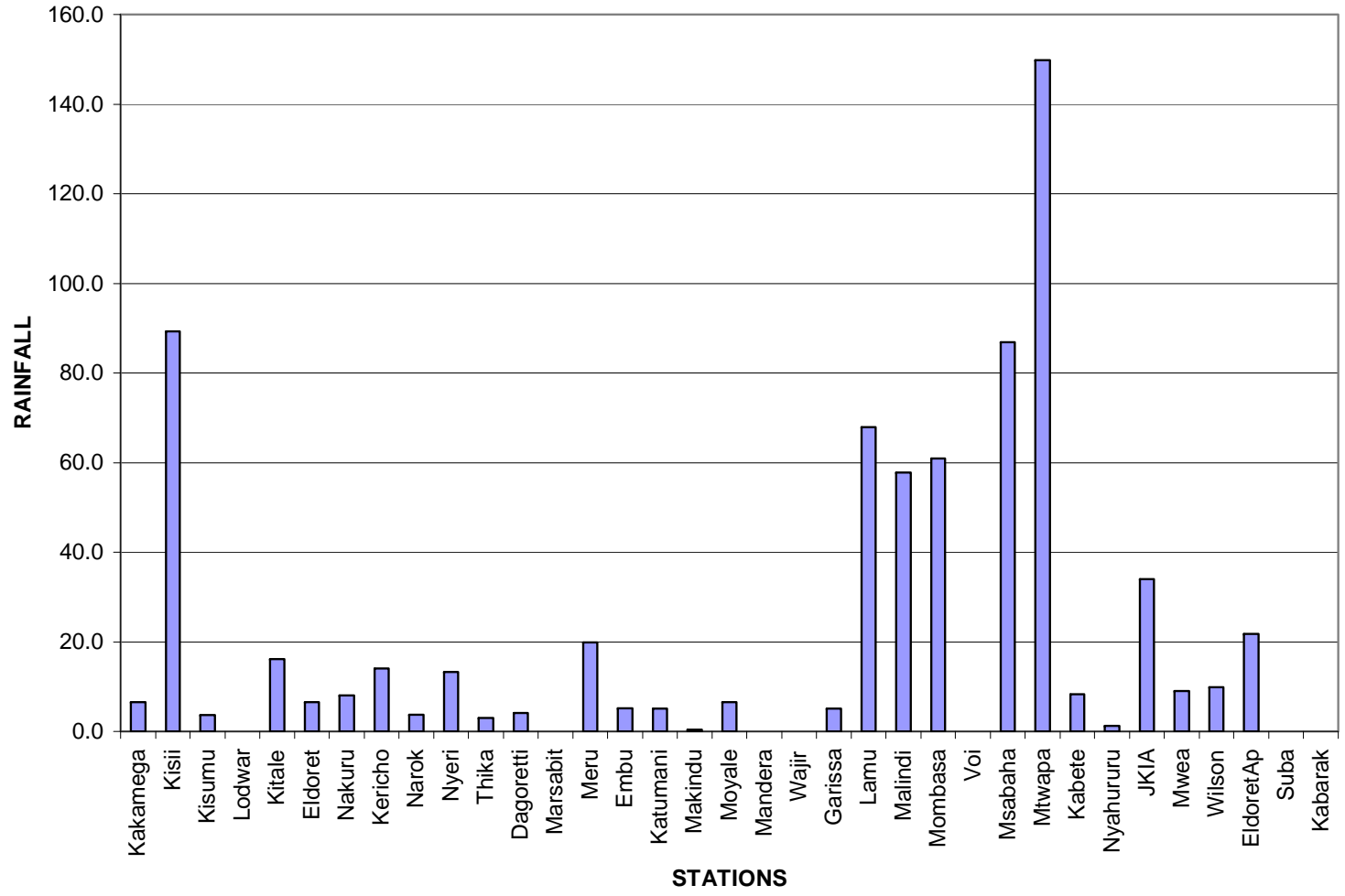
Famine/hunger and its related impacts is still being experienced and malnutrition levels are still high

Southern Rift Valley( Narok, Kajiado, Mara) experienced light rainfall, which boosted water sources for livestock, wildlife and human use. Despite the rains, pastures regeneration is gradual resulting in gradual animals` health (both livestock and game) improvement.

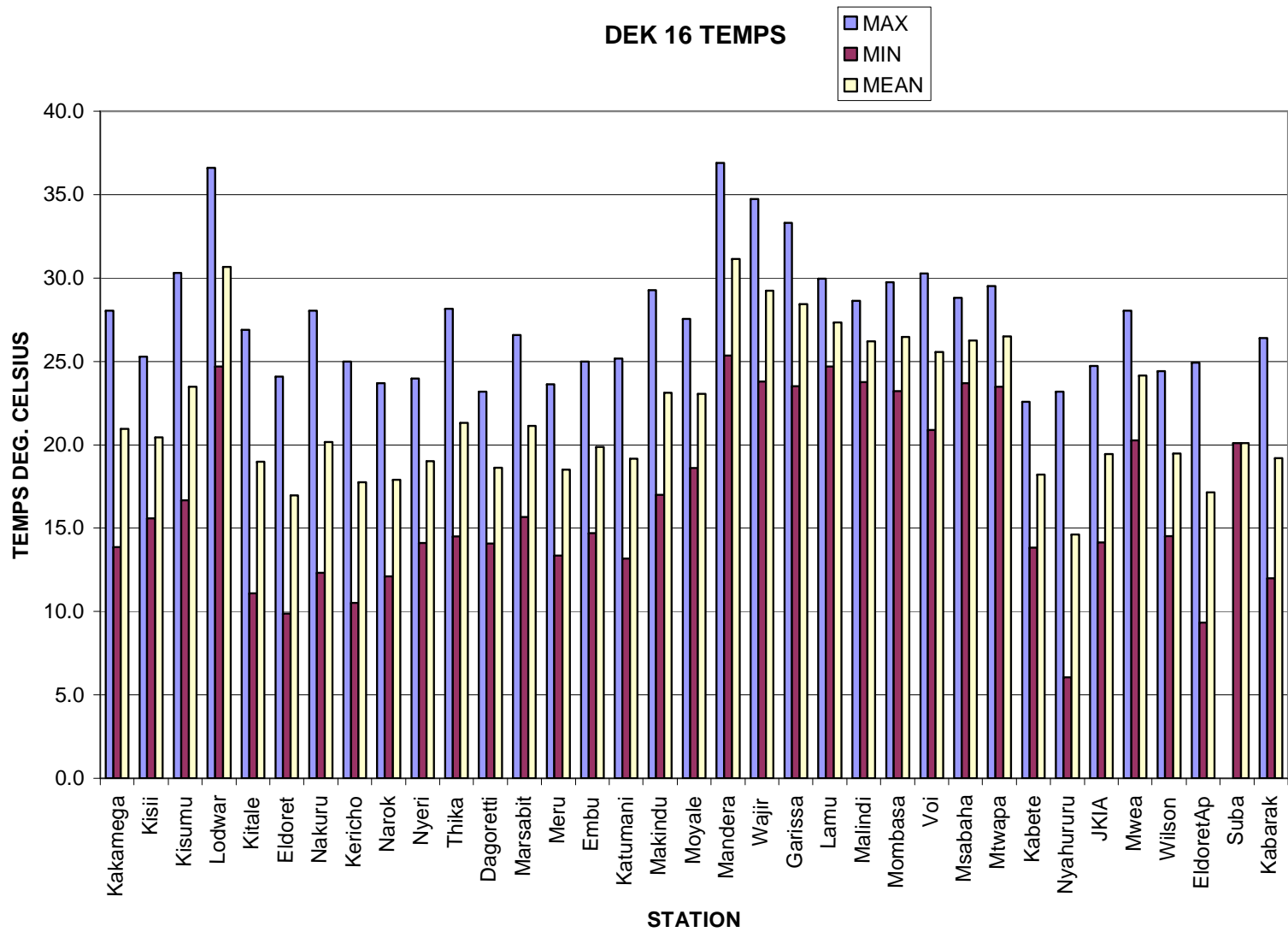
For the farming community, wheat and maize crops are doing well and corresponding to normal growth.

### RAINFALL CHART DEK 16

RAINFALL



**Fig. 1: Actual Rainfall (1st to 10th June, 2009) in mm**



**Fig 2: Mean Temperatures (1st to 10th June, 2009) deg. Celsius**

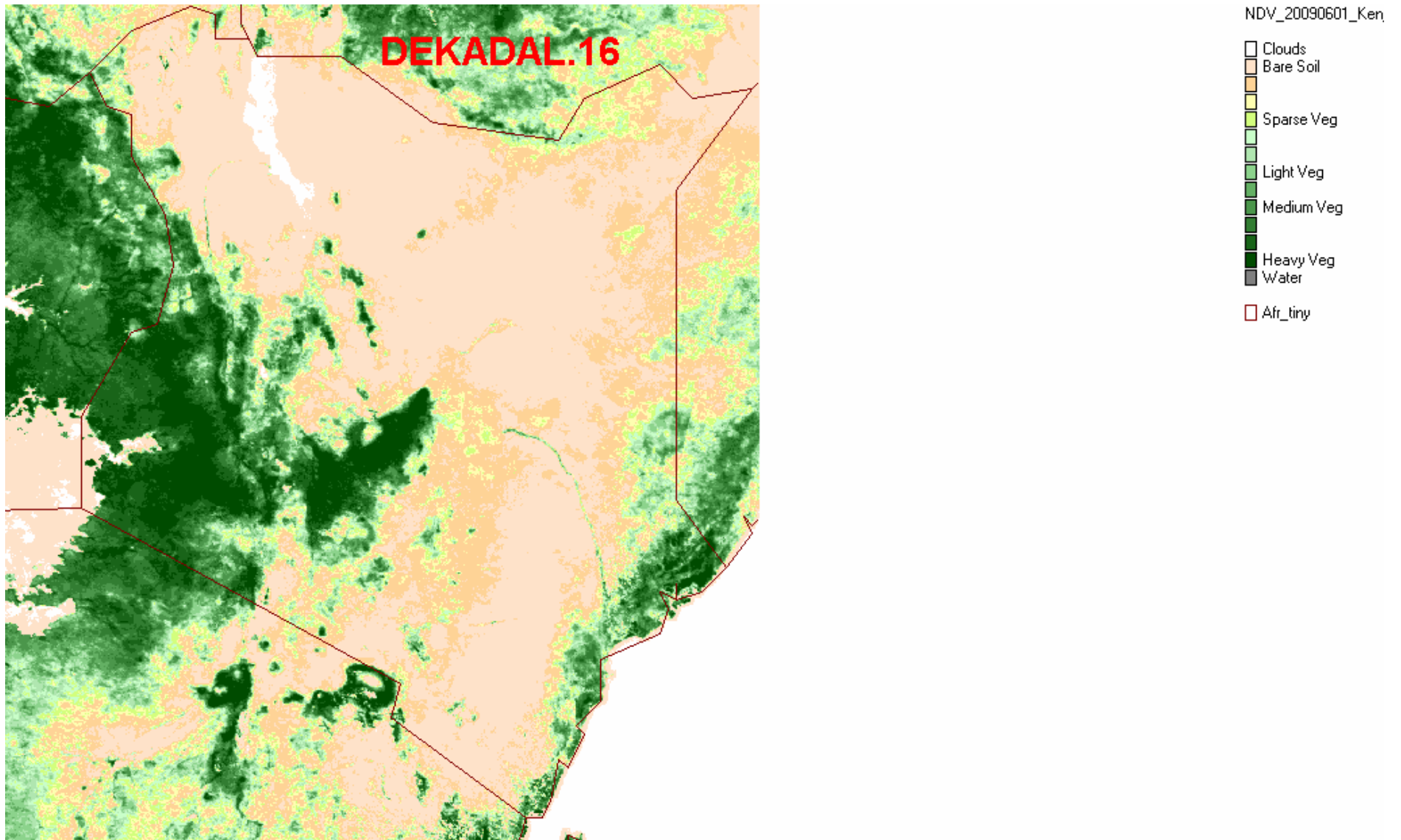


FIG 3: DEKAD 16 Normalized Difference Vegetation Index (1st to 10th June, 2009)

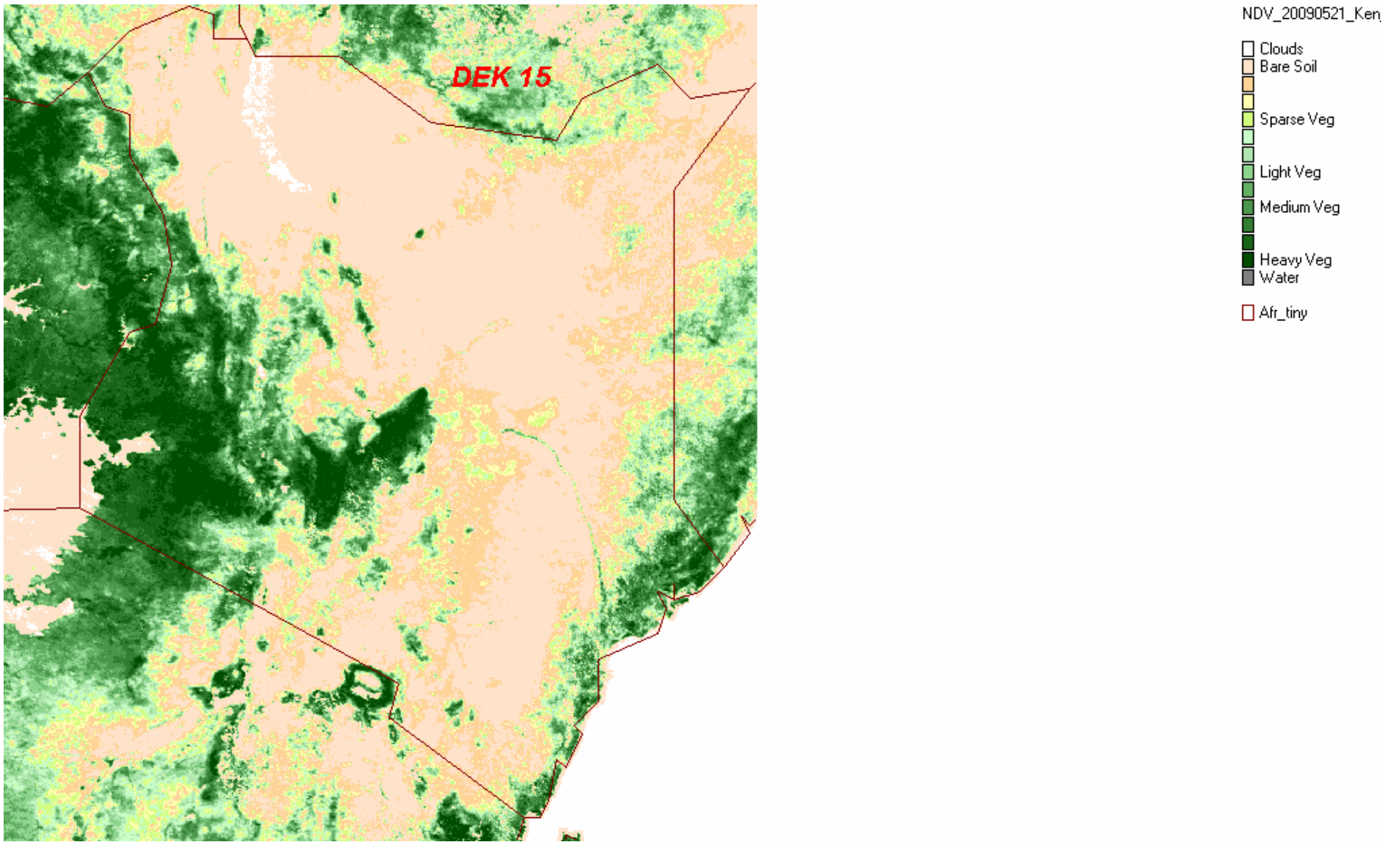


Fig. 4: DEKAD 15 Normalized Difference Vegetation Index (21st to 31st May, 2009)

## **EXPECTED WEATHER AND CROP CONDITIONS DURING THE NEXT 10 DAYS (11th –20th June 2009).**

During the next 10 days (11th – 20th June, 2009) the Western regions are expected to experience light to moderate rainfall over few several places. Crops are expected to continue doing well and correspond to normal growth with normal yields being expected.

Nyanza and Central Rift Valley are expected to experience light to moderate rainfall over few places, poor crops performance are due to reduced rainfall with below normal yields being expected in areas around Kisumu, Kitale and Eldoret.

Central Highlands, Nairobi area and its environs, are expected to experience light rains over few places, with cool and cloudy mornings with light rains/ drizzle over high ground areas. Crops are expected to continue doing well and correspond to normal growth. The beans is expected to reach full maturity stages and with normal yields being expected.

In Eastern Province regions of Embu and Meru districts, bordering Mt Kenya, are expected to experience light rains over few places, with cool and cloudy mornings with light rains/ drizzle over high ground areas. Crops are expected to continue doing well and correspond to normal growth. The beans is expected to reach full maturity stages and with normal yields being expected.

In South-Eastern lowlands, generally sunny conditions with light rains over few places are expected. Poor crop performances are expected due to insufficint rainfall.

The Coastal region is expected to experience moderate to heavy rainfall. Good crop performance is are expected due to increased rainfall.

In the pastoral regions and game parks/reserve of Northwestern, Northeastern, Northern Rift Valley, Southern Rift Valley and Southeastern Lowlands, sunny and dry conditions are expected to prevail, with light rainfall expected over few places. Poor pastures regeneration and inadequate water sources for human and animal/wildlife use are expected. Poor animals` health both (livestock and game) are expected, due to the gradual improvement in pastures conditions.



In summary, Crops are expected to continue doing well and correspond to normal growth in most regions of the country. In the pastoral region and game parks/reserves poor pasture regeneration and water sources are expected.

*This product should be used in conjunction with Kenya Meteorological Department weather forecasts. For more information, Contact*

*The Kenya Meteorological Department  
Agrometeorological Division  
Dagoretti Corner, Ngong Road,  
P.O. Box 30259, 00100 GPO, Nairobi  
Tel: +254 (0)20 3867880-7/3876957/3873682  
Fax: +254 (0)20 3876955  
E-mail: [agromet@meteo.go.ke](mailto:agromet@meteo.go.ke)  
Website: [www.meteo.go.ke](http://www.meteo.go.ke)*

©2009 The Kenya Meteorological Department