



KMD

AGROMETEOROLOGICAL BULLETIN

KENYA METEOROLOGICAL DEPARTMENT

24th Dekad, 21st to 31st August 2008

Issue No. 24/2008, Season: JAS

HIGHLIGHTS

- *During the 24th Dekad i.e. 21st to 31st August 2008 moderate to heavy rainfall was experienced over the Western, Nyanza, and parts Central Rift Valley provinces, with Kakamega, Kisii, Kisumu, Kitale, Eldoret Airport, Nakuru, Nyahururu recording a Dekadal total of 105.1, 62.7, 63.9, 39.2, 58.1, 5.3mm respectively. Central province, Nairobi area, its environ, parts of Eastern province bordering Mt. Kenya experienced light rains/drizzle with Nyeri, Embu, Dagoretti, recording 4.4, 3.9, 3.9mm respectively. The Coast province experienced light to moderate rainfall with Mtwapa, Malindi and Msabaha recording 20.8, 22.7 and 17.2mm respectively during the Dekad. The rest of the country remained generally dry.*
- *Day time temperatures were relatively low especially over the Western, parts of Central Rift Valley, Central highlands, Nairobi area and its environs which experienced cold and chilly conditions. Night temperatures were low over Western, parts of Central Rift Valley, Central highlands, Nairobi area and its environs with Nyahururu recording a Dekadal minimum mean of 6.5deg Celsius. (Figs.2)*
- *The pastoral regions and game parks of Northern Rift Valley, Southern Rift Valley, North Eastern and South Eastern lowlands, experienced light or no rains at all resulting in inadequate pastures and water for livestock and wildlife. Incidences of wildlife and human conflict have been reported in areas bordering game parks and game reserves. (Figs.1, 2 & 3).*
- *Hunger and other drought related impacts are being experienced in the regions which received inadequate rainfall during the growing season.*

CROP AND WEATHER REVIEW (21st to 31st August 2008)

Central Province and Nairobi area:

Cold and cloudy conditions with light rains/drizzle were experienced over several parts of Central province, Nairobi area and its environs. In the high ground areas the maize crop is at the maturity stage and harvesting has started with below normal yields being reported. For the low lying areas, of Nyeri North, Kirinyaga, Muranga, Kiambu, Thika and Maragua Districts the maize crop has withered resulting in very poor yields or none at all. Food distribution has already started for the most vulnerable households in in this districts.

Eastern Province:

Cold and Cloudy conditions with light rains/drizzle were experienced in parts Embu and Meru districts bordering Mt. Kenya. Maize crop is at the maturity stage and harvesting has started with below normal yields being reported. In the lowland areas of Mbeere District, the maize crop has withered with poor or no yields being expected.

In the Southern Lowlands (Machakos, Makueni, Mwingi and Kitui districts), hot and dry conditions dominated this region. Total crop failure has occurred in several places due inadequate rainfall during the season. The government machineries should be put on alert on food insecurity for the most vulnerable livelihoods in this districts.

Pastures and water for livestock and wild life is inadequate and animal human conflict may arise especially for the areas bordering the game parks/reserves.

Coast Province:

Light to moderate rainfall was received in this region during the review period. Maize crop is at the maturity stage and harvesting has started in most areas with above normal yields being reported. Grass/browse for livestock and game is also doing well and the animals are healthy.

North Eastern Province:

Light or no rains at all was experience during the dekad resulting in inadequate pastures and water for for livestock, wildlife and human use. Hunger and death of livestock has been reported in some areas within the province. (Figs.1, 2, & 3).

Western Province:

Moderate to heavy rainfall was received in several places in this region (Kakamega, Bungoma, Busia, Eldoret and Kitale). Maize crop is at flowering/maturity stages and corresponding to normal growth with normal yields expected. No adverse effect has been reported. (Figs.1 & 2).

Nyanza and Central Rift Valley:

Light to moderate rainfall was received in this region. Crops are doing well and corresponding to normal growth. Maize crop in areas around Kisii is at the maturity stage and harvesting has started in some parts with normal yields being reported. In the same region some farmers have started land preparation and planting in readiness for the next season crop. The only adverse effect reported is the occurrence of a hail storm on 31st August 2008, which adversely affected tea and coffee. (Figs 1 & 2)

Northern and Southern Rift Valley:

Little or no rain was reported in the Northern Rift and North Western regions during the dekad. Hot and dry conditions dominated these regions resulting in inadequate pastures and water sources for both domestic and livestock. For the game parks/reserves, inadequate pasture, browse and water may cause animal /human conflict while migrating in search of food and water. In the farming areas of Southern Rift Valley lack of adequate rainfall has resulted in seasonal crop failure. (Figs.1-5).

DEKADAL RAINFALL

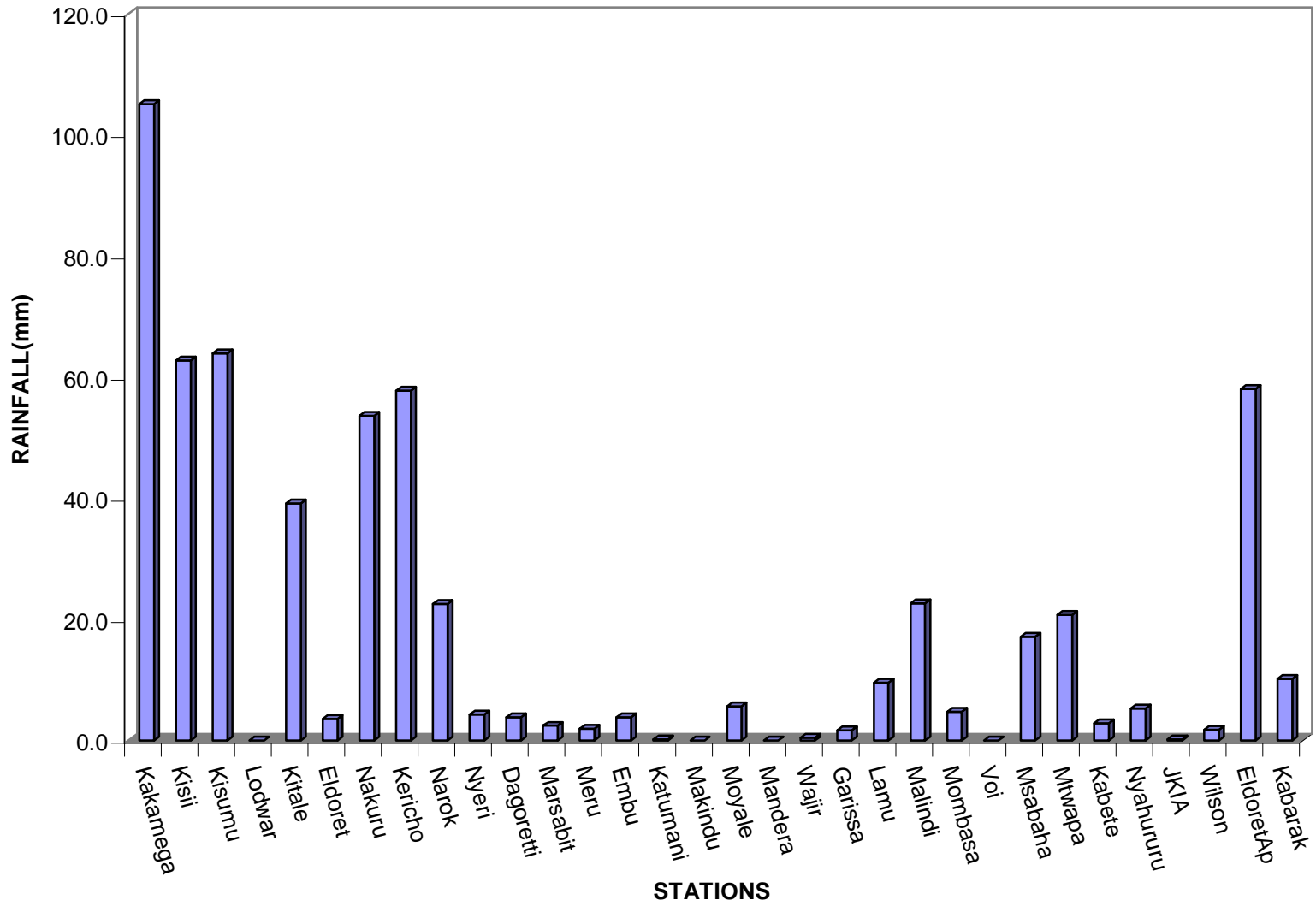


Fig. 1: Actual Rainfall (21st to 31st August 2008)

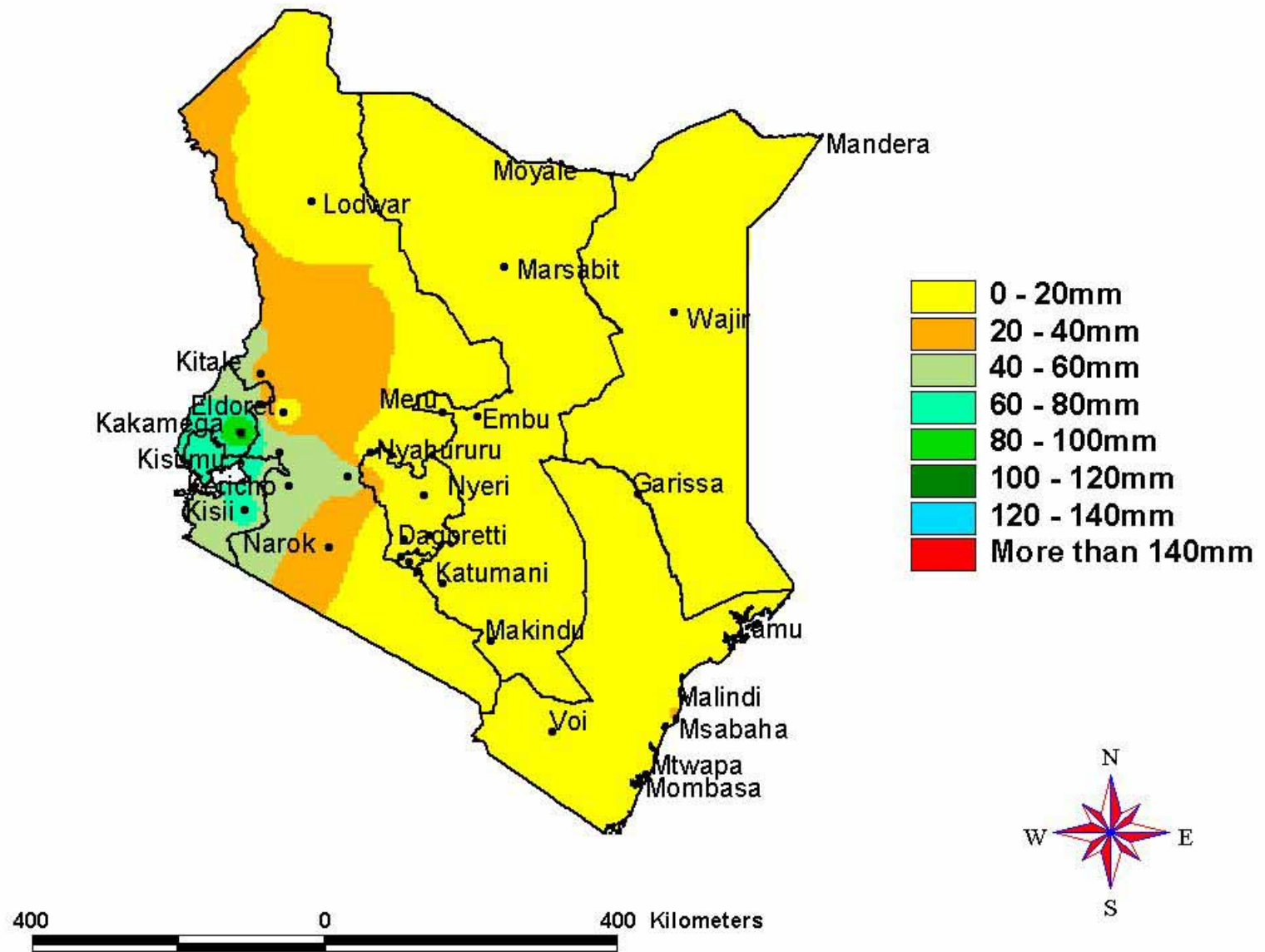


Fig. 2: Actual Rainfall (21st to 31st August 2008)

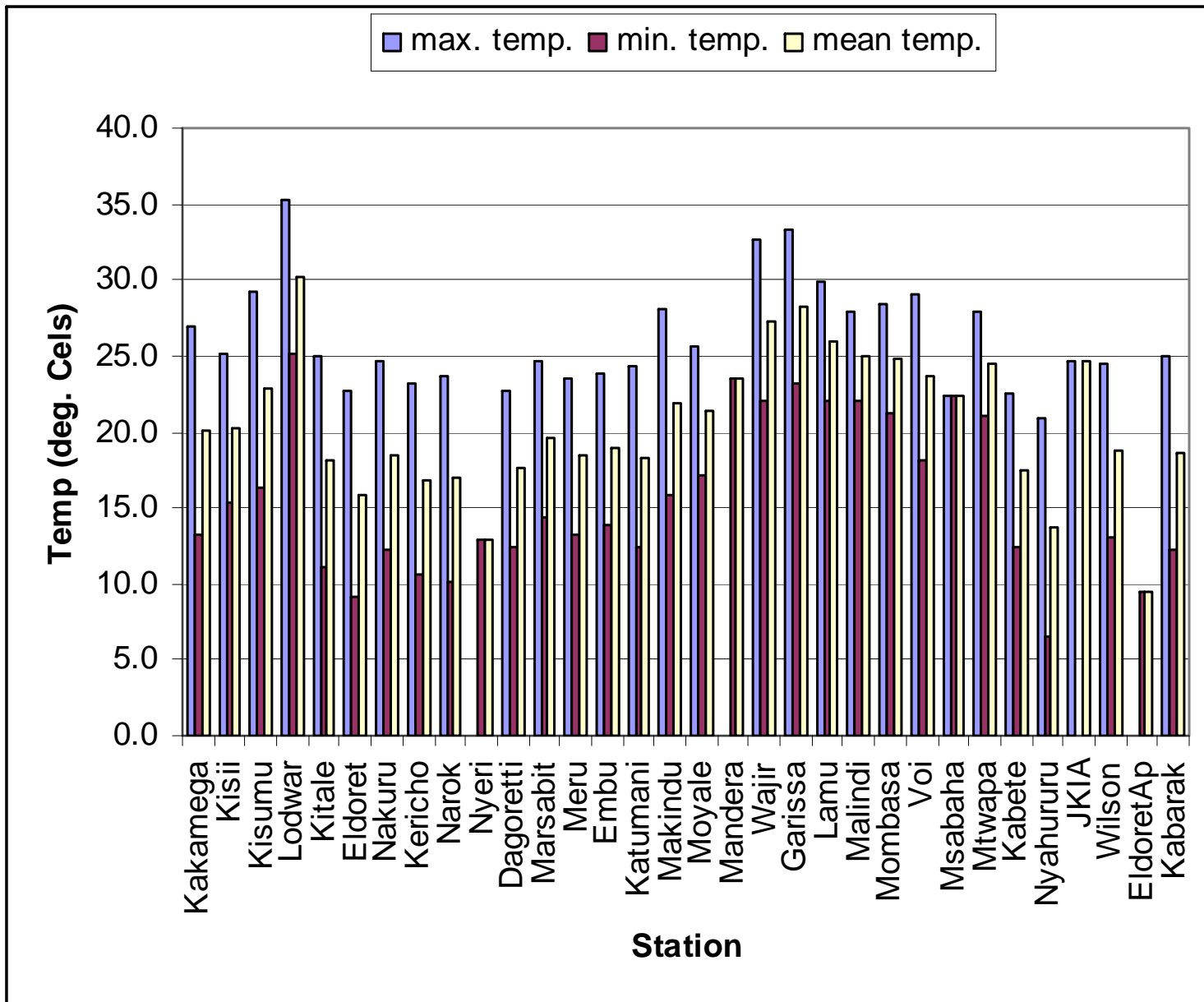


Fig 3: Mean Temperatures (21st to 31st August 2008)

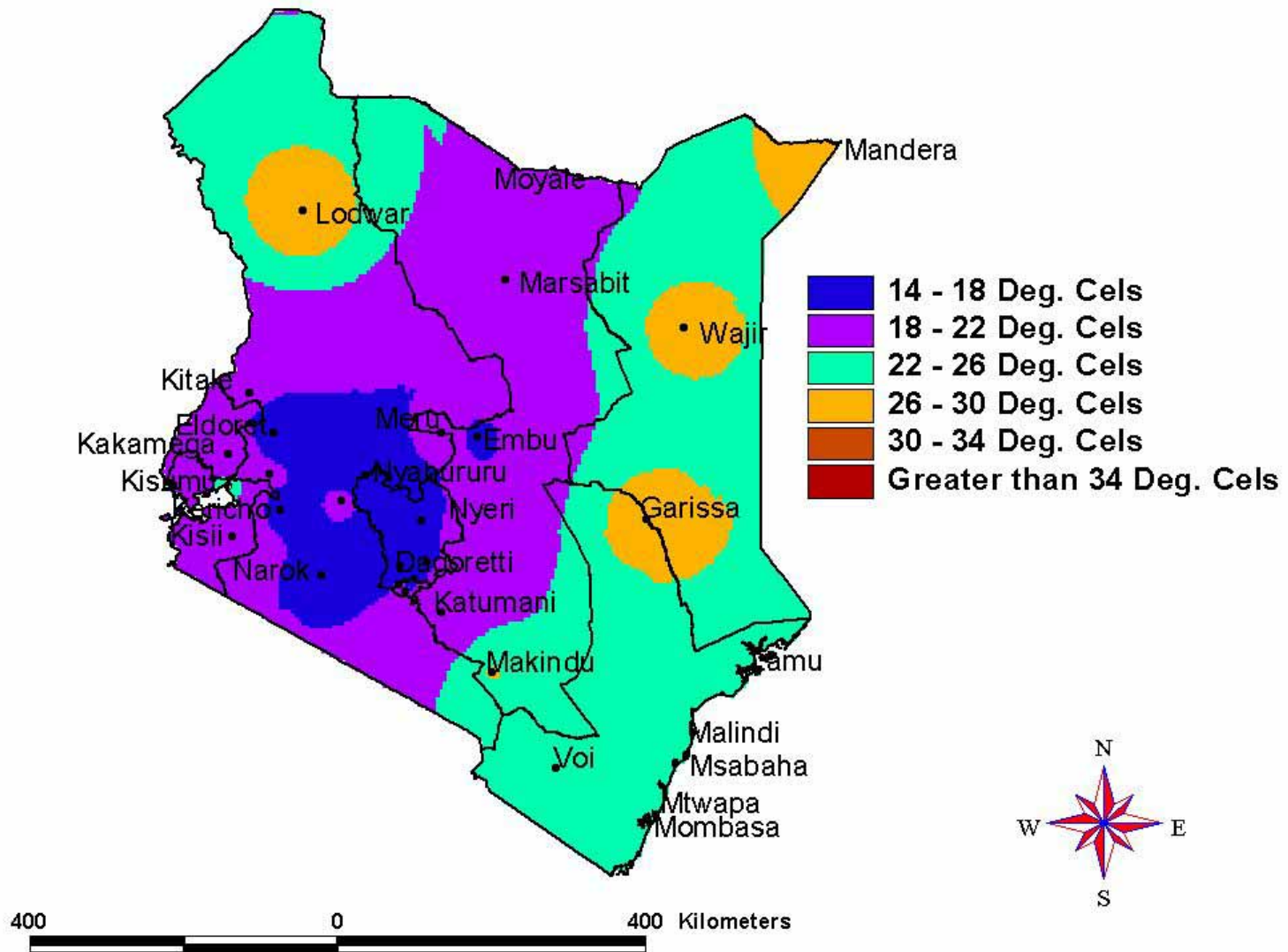


Fig 4: Mean Temperature (21st to 31st August 2008)

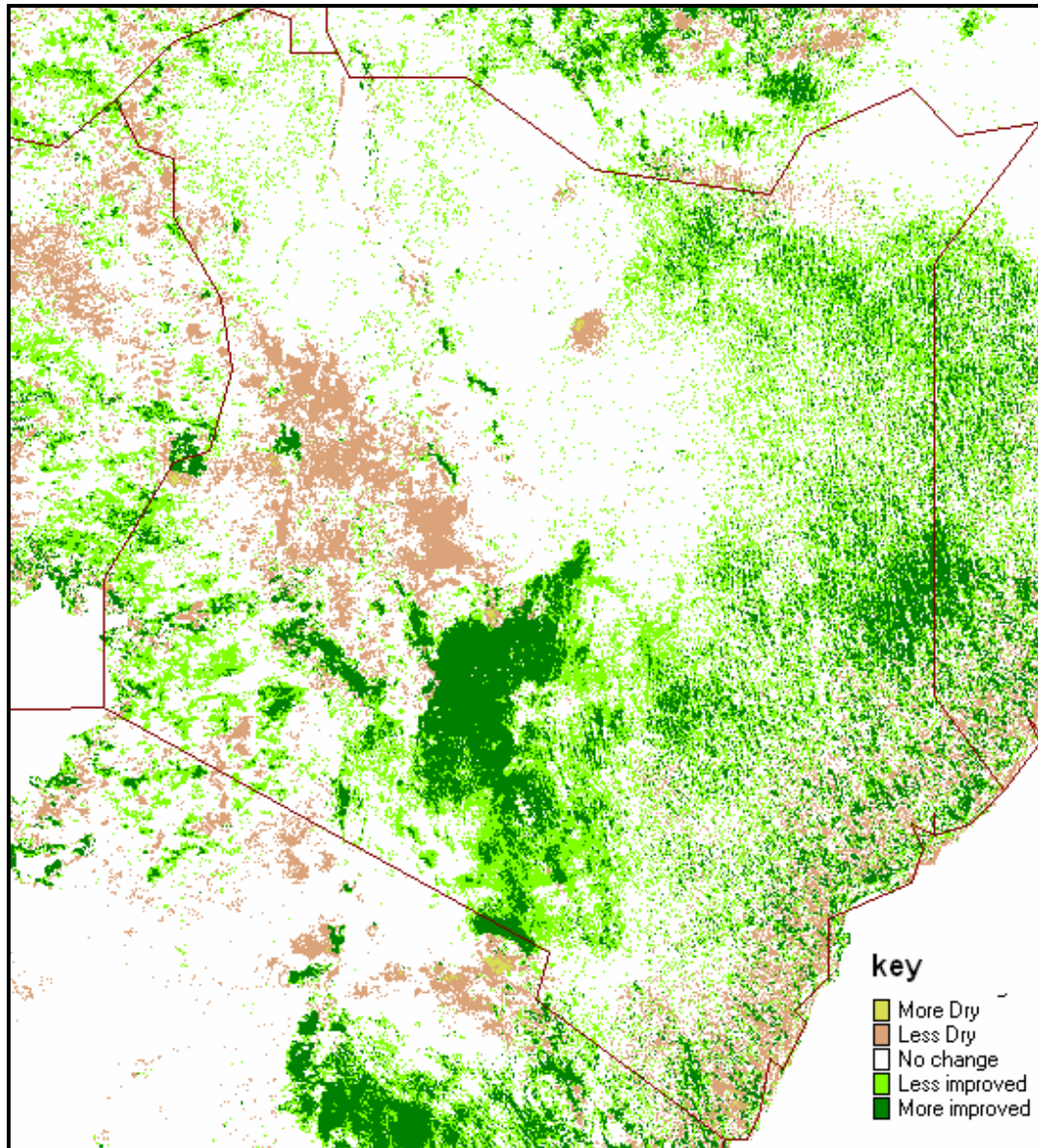


Fig. 5: Normalized Difference Vegetation Index (21st to 31st August 2008)

EXPECTED WEATHER AND CROP CONDITIONS DURING THE NEXT 10 DAYS (1st –10th September 2008).

During the next 10 days (1st –10th September 2008), Western, Nyanza and Central Rift Valley regions are expected to experience light to moderate rainfall over several places. Crops are expected to continue doing well and correspond to normal growth with normal yields being expected.

Central Highlands, Nairobi area and its environs, are expected to experience cold and cloudy conditions with light rains in several places. For the highland areas of Nyeri and Kirinyaga districts bordering Mt. Kenya maize harvesting is expected to continue.

In Eastern Province regions of Embu and Meru districts bordering Mt Kenya are expected to experience cold and cloudy conditions with light rains. Maize crop is at the maturity stage and harvesting is expected to continue. For the low lying areas of Mbeere district crop conditions are expected to remain poor.

In South-Eastern lowlands, dry and hot conditions are expected prevail resulting in inadequate pastures and water for human, livestock and wildlife use. Several livelihoods are likely to start experiencing the impacts of drought that has hit the region.

The Coastal region is expected to experience light to moderate rainfall which may hinder post harvest operations. Harvesting of maize crop is expected to continue.

In the pastoral regions of Northwestern, Northeastern and South Rift Valley districts sunny and dry conditions are expected to prevail, resulting in poor pastures and inadequate drinking water for human and animal/wildlife use. Death of livestock has been reported in some parts of Northeastern province and the pastoralists may be forced to cull their livestock to avoid livestock

In summary maize crop is at the flowering/maturity stages in most places of Western Kenya and parts of central Rift Valley around Kakamega, Kitale and Eldoret and is corresponding to normal growth with normal yields being expected. In the Highland areas of Central and Eastern Provinces the maize crop is at the maturity stage and harvesting is continuing with below normal yields being reported. Regions which received inadequate rainfall during the Long Rains Season have started experiencing hunger and other drought related impacts as the growing season comes to an end.

This product should be used in conjunction with Kenya Meteorological Department weather forecasts

Contact information

Kenya Meteorological Department

Agrometeorological Division

Dagoretti Corner, Ngong Road,

P.O. Box 30259, 00100 GPO, Nairobi

Tel: +254 (0)20 3867880-7/3876957/3873682

Fax: +254 (0)20 3876955

E-mail: agromet@meteo.go.ke

Website: www.meteo.go.ke

©2008 The Kenya Meteorological Department