



KMD

AGROMETEOROLOGICAL BULLETIN

KENYA METEOROLOGICAL DEPARTMENT

16th Dekad, 1st to 10th June 2008

Issue No. 16/2008, Season: MJJ

HIGHLIGHTS

- *During the 16th Dekad i.e. 1st to 10th June 2008 moderate to heavy rainfall was experienced over the Western and parts central Rift Valley while the coastal region experienced light rainfall. with Kakamega, Kisii, Kisumu, Kericho, Eldoret, Nakuru, Msabaha, Malindi, Lamu, Mombasa, Mtwapa, 61.5, 49.3, 95.0, 58.2, 84.4, 24.4, 12.0, 8.5, 6.5, 3.8, 9.9 respectively. The rest of country remains generally dry.*
- *Maximum (daytime) temperatures remained relatively low over most parts of the country due to overcast skies condition.. Night temperatures were relatively cold especially over some parts of central highlands, Nairobi area and parts of Central Rift Valley, with Nyahururu recording a minimum temperature of 7.2 deg. Celsius on 6th June 2008 with a Dekadal mean of 9.3 deg Celsius. (Fig.2)*
- *The pastoral regions and game parks of Northern Rift Valley Southern Rift Valley, North Eastern and South Eastern lowlands, experienced light rainfall or no rains at all and this resulted in poor pastures and inadequate water sources with incidences of human and animal conflict being reported. (Figs.1 & 3).*

CROP AND WEATHER REVIEW

(1st to 10th June 2008)

Central Province and Nairobi area:

Cool and cloudy conditions with light rains/drizzle were experienced over most parts of Central province, Nairobi area and its environs. Maize crop is at the flowering stage in most places while bean crop is at the maturity stage. The maize crops in these region are experiencing water stress especially in the lowland areas of Kirinyaga, Muranga, Maragua and Thika Districts due to insufficient rainfall, which is highly required at this stage of grain formaton.

Eastern Province:

Cloudy conditions with light rains were experienced in parts of this region bordering Mt. Kenya.. Maize crop is at the flowering stage in most places while beans are at the maturity stage. Crops in some parts of these region are experiencing water stress especially in the lowland areas of Mbeere District due to insufficient rainfall resulting in poor grain formatiom and subsequent reduction in yields.

To the south (Machakos, Mwingi and Kitui), hot and dry conditions dominated this region during the period under review. The only adverse effect reported was too much sun and lack of rainfall causing severe water stress resulting in stunted crops.

Coast Province:

light rainfall was received in this region during the review period. Weeding is complete in most areas of Mtwapa, Mshabaha and lamu, which has been hampered by excessive weeds growth rate due to previous heavy rainfall and warm conditions. Maize crop is at the flowering stage and is corresponding to normal growth with yields above normal expected.

North Eastern Province:

Light rainfall or no rains at all was experienced in most parts of the province, resulting in poor pastures and inadequate water sources for both domestic and animal use. The pastoralist may be forced to start migration earlier tha uusal in such of pastures and water. (Figs.1, 2, 3)

Western Province:

Moderate to heavy rainfall was received in several places in this region (Kakamega, Bungoma and Busia). Weeding is almost complete in most parts of this region and crops are doing well and are corresponding to normal growth. the bean crop is at the flowering stage with normal yields being expected. (Fig.1).

Nyanza and Central Rift Valley:

Light to Moderate rainfall was received in several places in this region. Weeding is complete in most parts of these regions and crops are doing well and are corresponding to normal growth. Incidence of Army worm invasion has been reported in parts of Baringo Districts causing damage to foliage (Figs 1)

Northern and Southern Rift Valley:

Hot and dry conditions dominated in the Southern Rift and North Western regions resulting in inadequate pastures and water sources for both domestic and animal use. (Figs.1, 2, 3)

DEKADAL RAINFALL

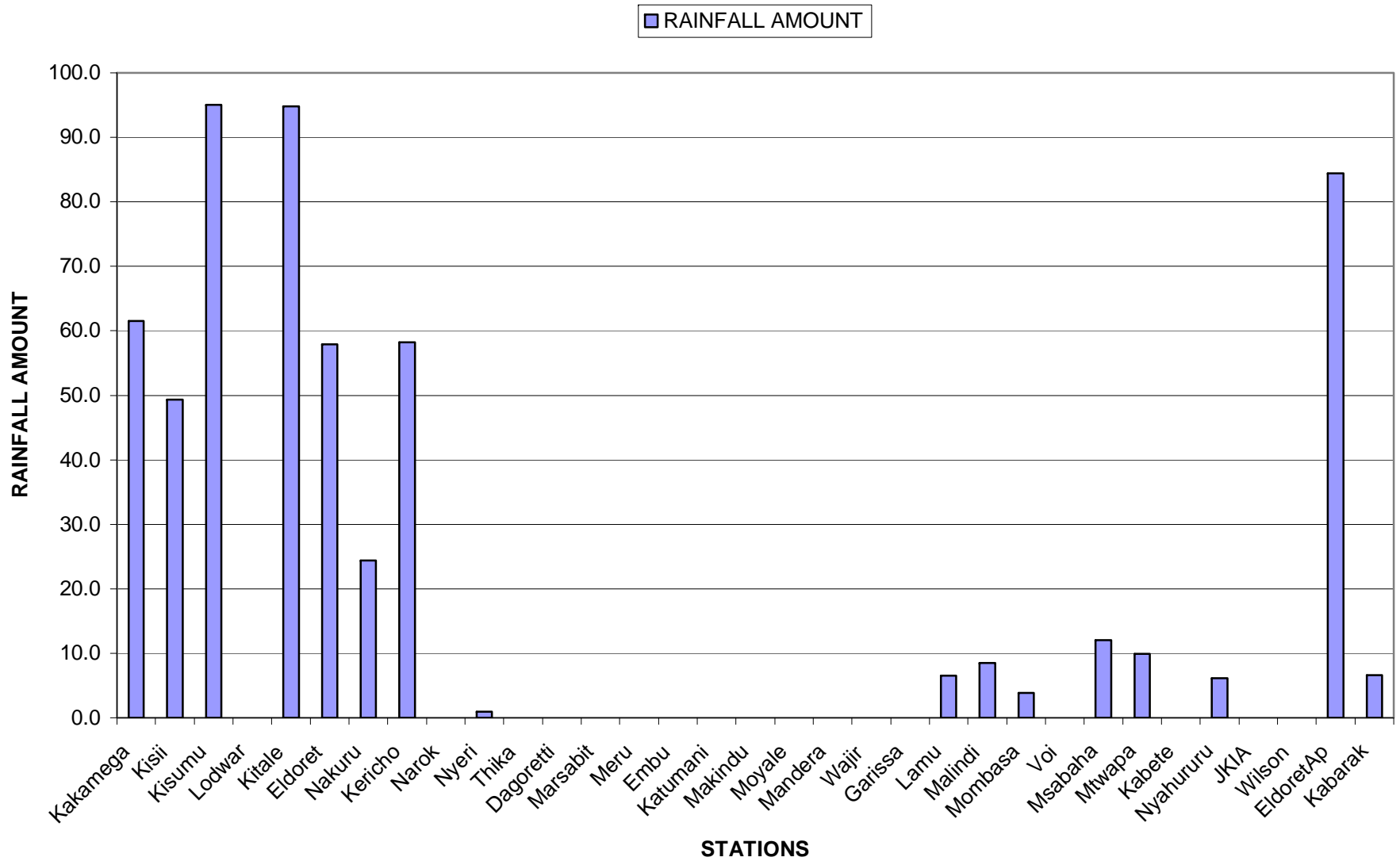


Fig. 1: Actual Rainfall (1st to 10th June 2008)

DEKADAL TEMPERATURES

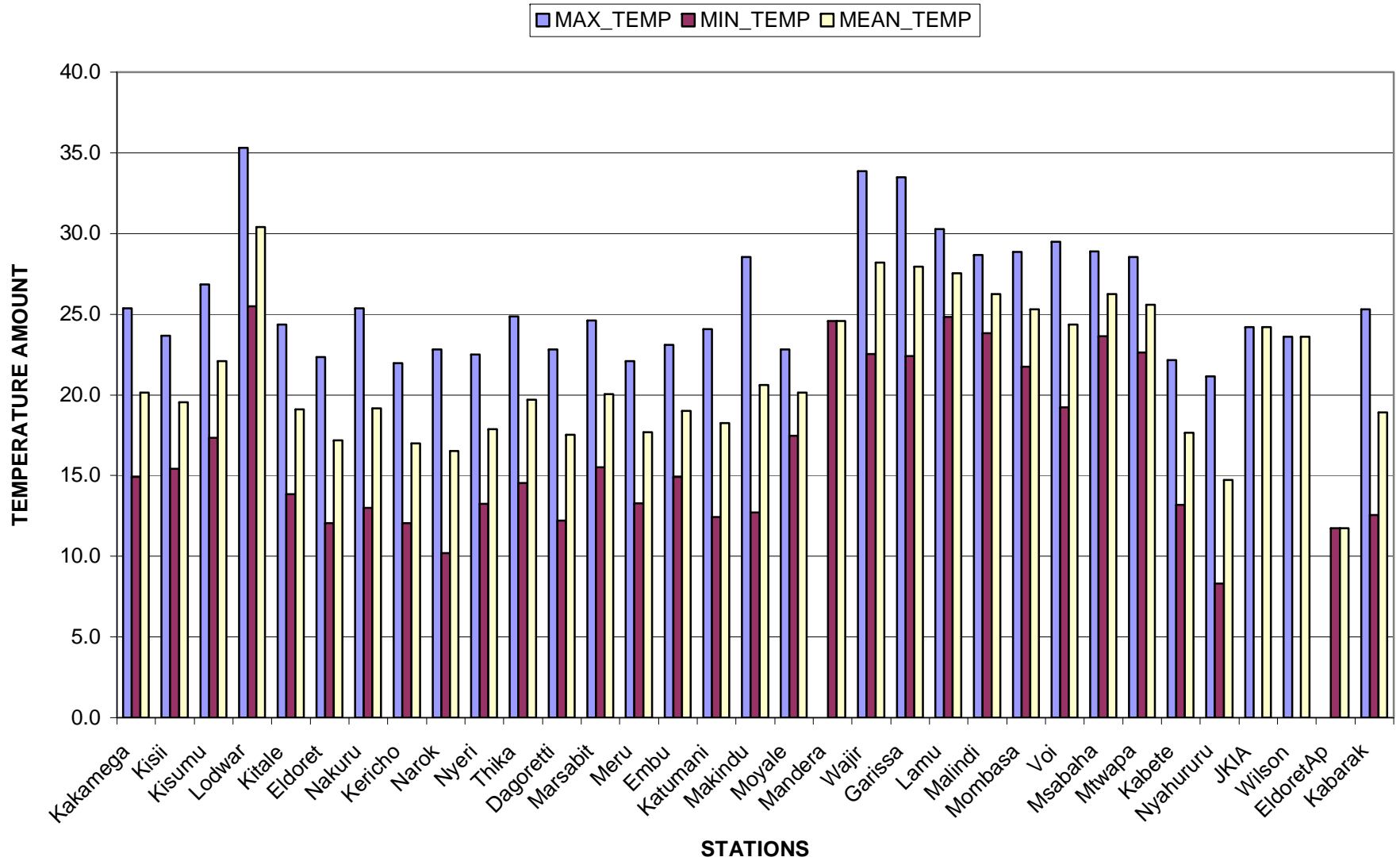


Fig 2: Mean Temperatures (1st to 10th June 2008)

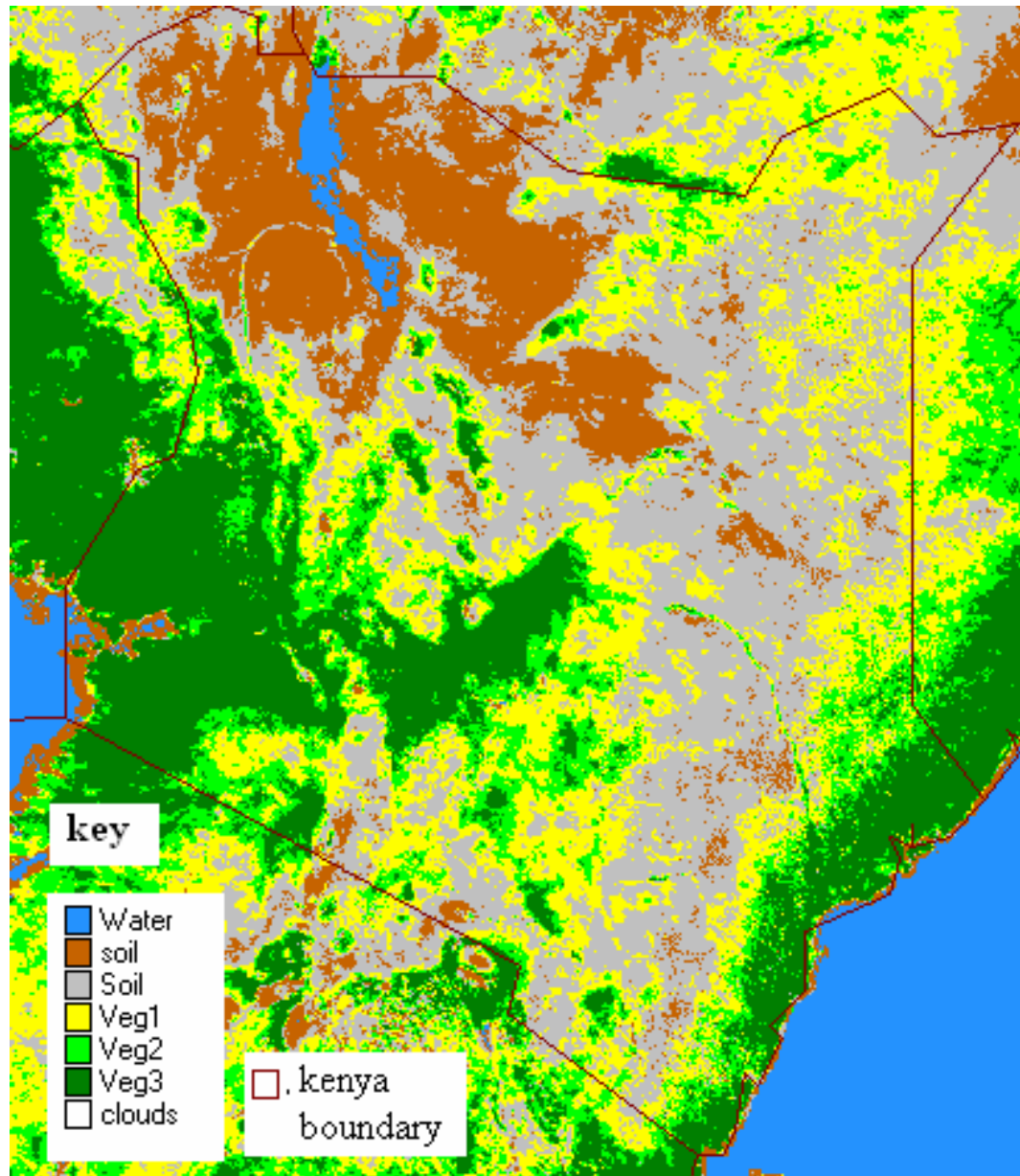


Fig. 3: Normalized Difference Vegetation Index (1st to 10th June 2008)

EXPECTED WEATHER AND CROP CONDITIONS DURING THE NEXT 10 DAYS (11th –20th June 2008).

During the next 10 days Western, Nyanza and Central Rift Valley regions are expected to experience moderate to heavy rainfall over several places. Crops are expected to continue doing well and correspond to normal growth.

Central Highlands, Nairobi area and its environs, are expected to experience cool and cloudy conditions with light rains or drizzles in few places. Crops are expected to continue experiencing water stress especially in the lowland areas resulting in poor grain formation with poor yields being forecasted. For the highland areas crops are expected to continue doing well and correspond to normal growth.

In Eastern Province regions bordering Mt Kenya are expected to experience cool and cloudy conditions with light rains or drizzles in few places. Crops are expected to continue doing well. In South-Eastern lowlands, light or no rainfall at all is expected over several places. Crops are expected to continue experiencing severe water stress due to lack rainfall resulting in stunted crops with poor yields being forecasted.

The coastal regions are expected to experience moderate to heavy rainfall. Weeding is expected to complete in several places. Crops are expected to continue doing well and correspond to normal growth with above normal yields being expected.

In the pastoral regions of Northwestern, Northeastern and South Rift Valley districts hot and dry conditions are expected to prevail, resulting in poor pastures and inadequate drinking water for both human and animal use. The pastoralists may be forced to start migration earlier than is usual in search of pastures and water and normally they are received with hostilities by host communities.

In summary weeding is expected to be complete in several parts of the country. Maize crop is at the vegetative stage in most places and is corresponding to normal growth. For some parts of Central and Eastern Provinces the maize crop is at the flowering/maturity stages while the bean crop is at the maturity/harvesting stages with poor yields expected due to inadequate rainfall during the season resulting in poor grain filling.

This product should be used in conjunction with Kenya Meteorological Department weather forecasts

Contact information

Kenya Meteorological Department

Agrometeorological Division

Dagoretti Corner, Ngong Road,

P.O. Box 30259, 00100 GPO, Nairobi

Tel: +254 (0)20 3867880-7/3876957/3873682

Fax: +254 (0)20 3876955

E-mail: director@meteo.go.ke

Website: www.meteo.go.ke

©2008 The Kenya Meteorological Department