



**KMD**

# **AGROMETEOROLOGICAL BULLETIN**

## **KENYA METEOROLOGICAL DEPARTMENT**

**5th Dekad, 11th to 20th February 2008**

**Issue No. 5/2008,      Season: JF**

### **HIGHLIGHTS**

- *During the 5th Dekad i.e. 11th to 20th February 2008, Light rainfall was received over the Western, Central Rift Valley, the central Highlands Nairobi area and its environs with Kakamega, Kisii , Kericho, Narok and Dagoretti recording a Dekadal total of 7.2, 15.2, 22.2, 57.3, and 1.61 mm respectively. The rest of the country remained hot and dry.(Fig.1)*
- *Mean daily temperatures were relatively high over most parts of the country with Lodwar and Wajir recording maximum day temperature of 38.4 and 37.4 deg Celsius respectively on 19th February 2008. Low night temperatures were recorded over some parts of Central Rift Valley with Nyahururu recording a minimum of 6.2 deg Celsius on 18th and 20th February 2008. (Fig.2)*
- *The pastoral regions and game parks of Northern and Southern Rift Valley, North Eastern and South Eastern lowlands, experienced light or no rains at all during the entire period resulting in inadequate pastures. (Figs.1 & 3).*

## **CROP AND WEATHER REVIEW** **(11th to 20th February 2008)**

### **Central Province and Nairobi area:**

Light rainfall or no rains were received over Central province, Nairobi area and its environs.

Most crops are at the full maturity stage and are malnourished due to the prolonged dry spells experienced during the season. Crops in several lowlands regions have dried up. However, in the highlands regions of Nyeri and Kirinyaga crops are stunted and poor yields are expected. Land preparation has started in some areas in readiness of the long rain season.

### **Eastern Province:**

Hot and dry conditions continued to be experienced during the Dekad. Crops have reached full maturity but are stunted. However very low yields are expected.

The south (Machakos, Mwingi and Kitui), dry and hot conditions dominated the region. Crops have dried up in several areas but around Makindu crops are at the maturity stage with poor yields expected. Land preparations have started in readiness for the long rains.

### **Coast Province:**

Dry and hot conditions were experienced over this region during the review period. Land preparations have started in readiness for the long rains.

### **North Eastern Province:**

Dry and hot conditions continued to be experienced over this region resulting in poor pastures and inadequate water sources for both domestic and animal use. This poses risk of human and animal conflicts. (Figs.1, 2, 3)

### **Western Province:**

Light rainfall was received in some parts of this region (Kakamega, Bungoma and Busia). Land preparations is in progress in readiness for the long rain season. (Fig.1).

### **Nyanza and Central Rift Valley:**

Light to moderate rainfall was received in some parts of this region. Crops are doing well and in Kisii maize crop is at the maturity stage and corresponding to normal growth with normal yields expected. (Figs 1)

### Northern and Southern Rift Valley:

Dry and hot conditions prevailed in the region resulting in poor pasture regeneration and inadequate water sources for domestic, wildlife and animal use. (Figs.1, 2, 3)

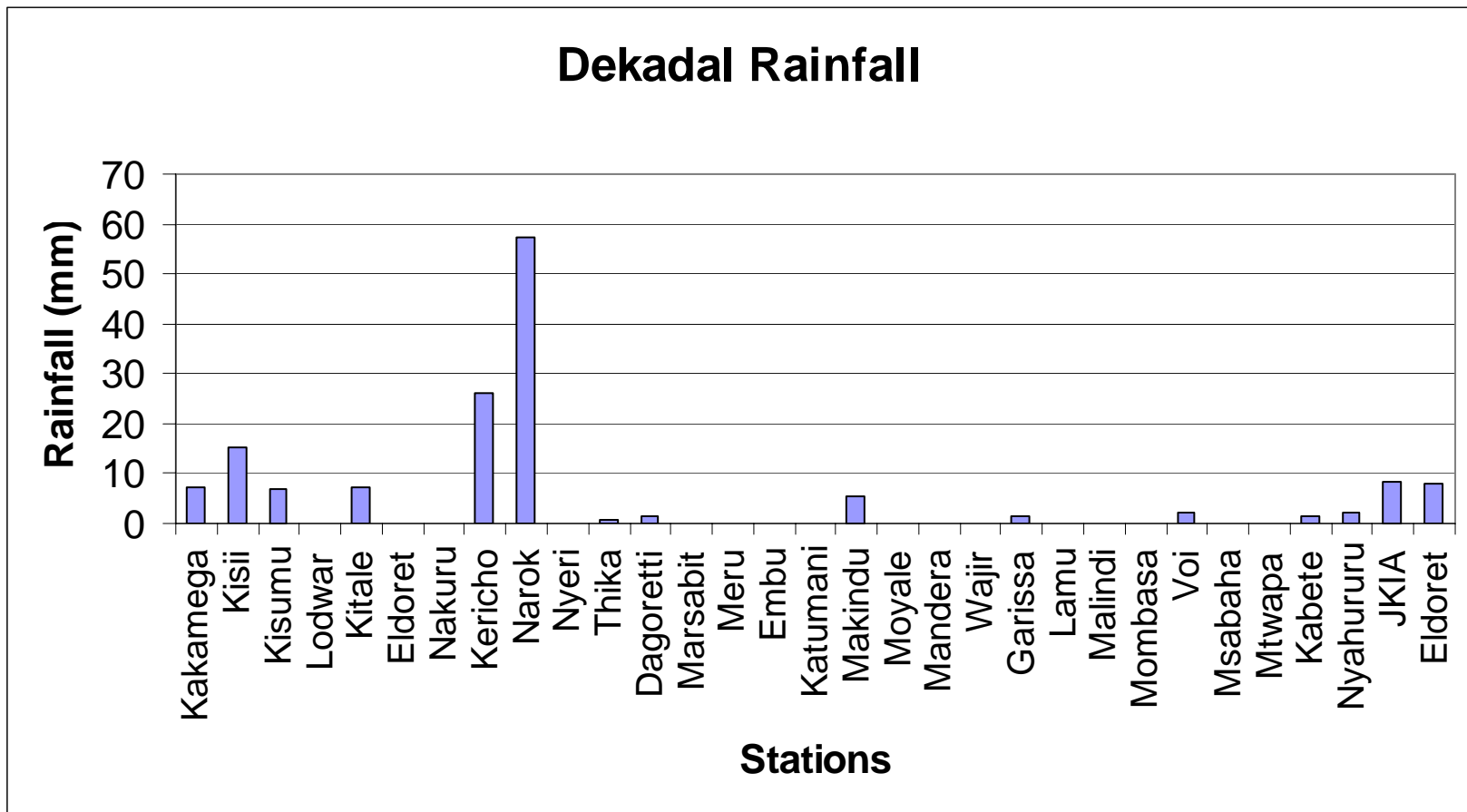


Fig. 1: Actual Rainfall (11th to 20th February 2008)

# Dekadal Temperatures

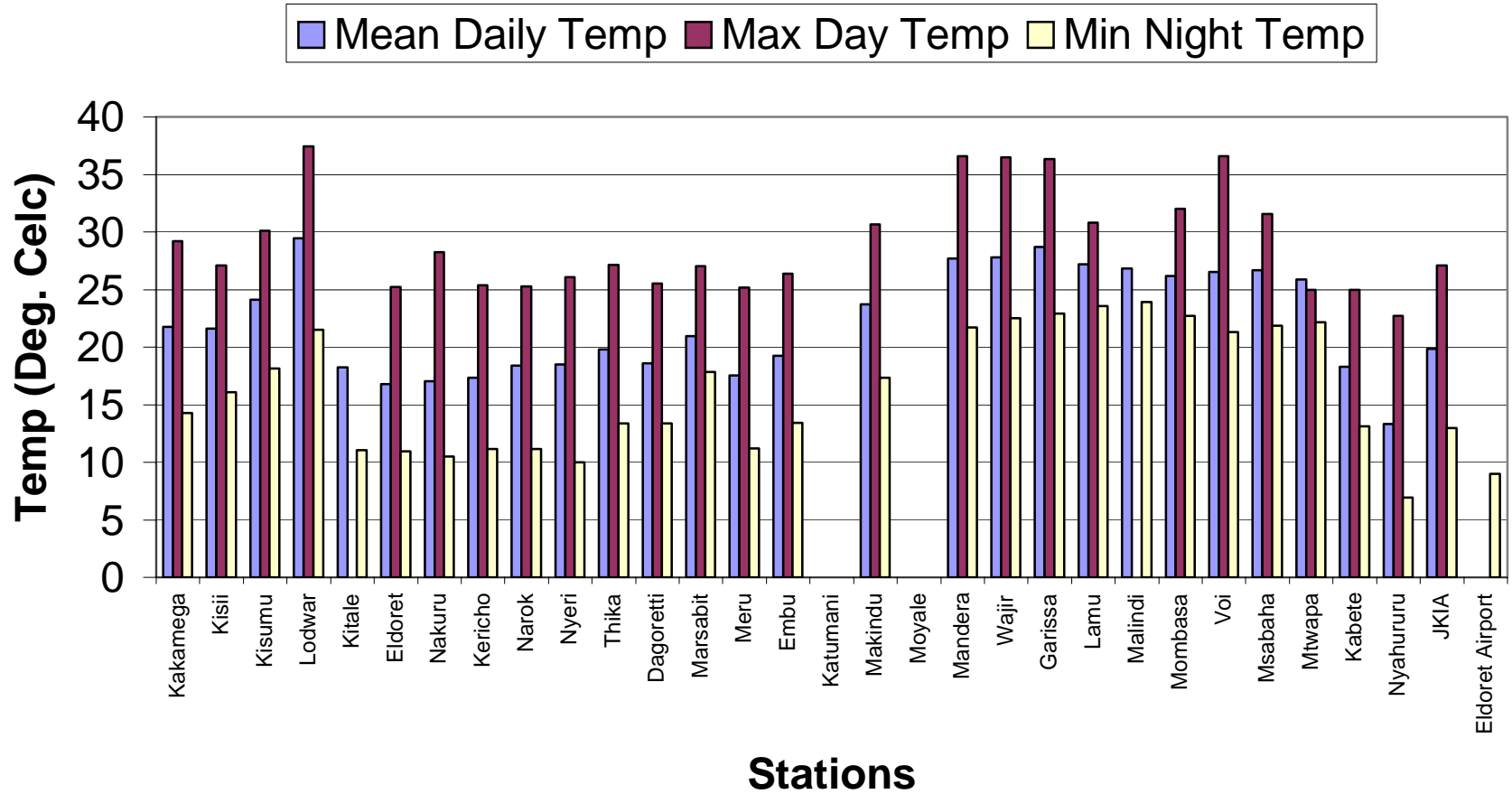
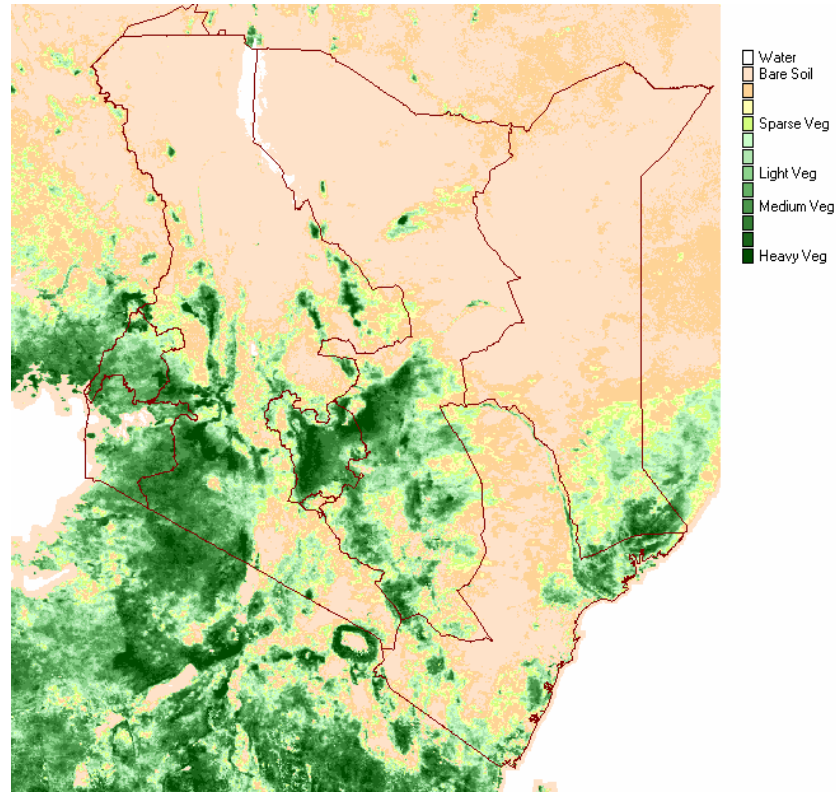


Fig 2: Mean Temperatures (11th to 20th February 2008)



**Fig. 3: Normalized Difference Vegetation Index (11th to 20th February 2008)**

**EXPECTED WEATHER AND CROP CONDITIONS DURING THE NEXT 10 DAYS (21st –29th February 2008).**

During the next 10 days Western, Nyanza and Central Rift Valley regions are expected to experience light rainfall over a few places. Land preparation is commencing in some regions whereas in other areas around Kisii crops are at maturity stage and normal yields are expected.

Central Highlands, Nairobi area and its environs, are expected to receive light rainfall in few places. Harvesting is taking place in some areas with reports of below normal yields. Land preparation is expected to continue in some places in readiness for the long rains.

In South Eastern lowlands, hot and dry conditions are expected to prevail. Land preparation is expected to commence in readiness for the long rains.

In the pastoral regions of North Eastern and North Western including Southern Rift Valley dry and hot conditions are expected to continue resulting in poor pastures and scarce water sources for domestic, wildlife and animal use posing a risk of human and animal conflict in search of water.

In summary land preparations are expected to commence over most regions of the country. The Government machineries should be put on alert on food security for the most vulnerable livelihoods.

In the pastoral regions and game parks dry and hot conditions are expected to prevail resulting in inadequate pastures and water for both domestic and animal use.

*This product should be used in conjunction with the daily 24-hour forecast issued by the Department.  
This product should be used in conjunction with KMD weather forecasts*

***Contact information***

***Kenya Meteorological Department***

***Agrometeorological Division***

***Dagoretti Corner, Ngong Road,***

***P.O. Box 30259, 00100 GPO, Nairobi***

***Tel: +254 (0)20 3867880-7/3876957/3873682***

***Fax: +254 (0)20 3876955***

***E-mail: [director@meteo.go.ke](mailto:director@meteo.go.ke)***

***Website: [www.meteo.go.ke](http://www.meteo.go.ke)***

©2008 The Kenya Meteorological Department