



## KENYA METEOROLOGICAL SERVICE DEKADAL AGROMETEOROLOGICAL BULLETIN

### WEATHER AND CROP REVIEW FOR DEKAD 9, 21<sup>st</sup> - 31<sup>st</sup> MARCH 2016

#### 1. HIGHLIGHTS ON RAINFALL AND TEMPERATURE

There was some increase in rainfall activities countrywide in intensity and a slight decrease spatial distribution. Nairobi region received the highest rainfall of 79.0mm at Kabete station compared to 23.7mm reported at Kisii station in Nyanza region in the previous dekad. The second highest rainfall of 66.3mm was recorded at Kericho station in Rift Valley region. Nyanza region received the highest rainfall amount of 50.4mm at Kisumu station. Kakamega station in Western region recorded the highest rainfall amount of 47.1mm. Central region reported the highest rainfall amount 38.6mm at Nyeri station. Katumani station in the Eastern region received the highest rainfall amount of 0.5mm. Coastal region recorded the highest rainfall amount of 0.02mm at Voi station. Stations in North Eastern region reported dry conditions.

Both Maximum and Minimum temperatures increased. Mandera Station in North Eastern region reported the highest Maximum temperature of 39.9°C. The lowest Minimum temperature of 8.8°C was reported at Nyahururu station compared to 8.5°C recorded in the same station in the previous dekad.

For a more comprehensive summary of rainfall and other meteorological parameters, see Figures 3.1 to 3.4 as shown below.

#### 2. CROP AND WEATHER REVIEW FOR DEKAD 9, 21<sup>st</sup> - 31<sup>st</sup> MARCH, 2016

##### 2.1 NYANZA AND WESTERN REGIONS

###### 2.1.1 Kakamega

The station received rainfall amount of 47.1 mm. The mean air temperature was 24.3°C. There was no report on Total pan Evaporation and sunshine hours.

*Farmers are planting their crops.*

###### 2.1.2 Kisii

The station reported total rainfall amount of 28.5mm. The mean air temperature and total Pan Evaporation recorded were 23.2°C and 44.6mm respectively. There was no report on Sunshine hours.

*Both maize and beans were at emergence stage and in fair state. Some farmers are still preparing their farms for the long rains.*

## **2.2 RIFT VALLEY REGION**

### **2.2.1 Kitale**

The station recorded total rainfall amount of 9.8mm reported was 55.2mm. There was no report on Total Pan Evaporation, the mean air temperature and Sunshine duration.

*No phenological report.*

### **2.2.2 Eldoret - Kapsoya**

The station received 6.1mm of rainfall. The mean air temperature and Total Pan Evaporation were 20.2°C and 76.1mm respectively. There was no report on sunshine hours.

*No phenological report.*

## **2.3 CENTRAL KENYA HIGHLANDS AND NAIROBI AREA REGION**

### **2.3.1 Nyeri**

Total rainfall amount recorded was 38.6mm. The average air temperature reported was 20.7°C. There was no report on Total Pan Evaporation and sunshine parameters.

*Land preparation for the long rains still underway.*

### **2.3.2 Kabete**

The station reported rainfall amount of 79.0mm. The total Pan Evaporation recorded was 75.5mm. There was no report on Mean air Temperature and Sunshine parameters.

*Farmers had prepared their farms and are waiting for the rains.*

### **2.3.3 Thika**

The station reported dry conditions. The average air temperature and Total Pan Evaporation recorded were 22.7°C and 65.5 respectively. There was no report on Sunshine duration.

*Farmers are preparing their farms for the long rains season.*

### **2.3.4 Nyahururu**

The station recorded total rainfall amount of 0.02mm. The mean air temperature and Total Pan Evaporation reported were 17.7°C and 69.0mm respectively. There was no report on Sunshine hours.

*Land preparation for the upcoming season is underway.*

### **2.3.5 Dagoretti**

The station received 9.6mm. Total Pan Evaporation was 59.5mm. No report on mean air temperature and Sunshine parameters.

*No Phenological report.*

## **2.4 EASTERN KENYA REGION**

### **2.4.1 Embu**

The station reported dry conditions. The total Pan Evaporation reported was 58.0mm. There was no report on Mean air temperature and sunshine parameters.

*Farmers are preparing their farms for the long rains season still underway.*

### **2.4.2 Meru**

The station recorded total rainfall amount of 0.01mm. The Average air Temperature and Total Pan Evaporation reported were 21.2°C and 59.0mm respectively. There was no report on Sunshine parameter.

*No Phenological report.*

### **2.4.3 Katamani (Machakos)**

The station reported total rainfall amount of 0.5mm. The Mean air Temperature and Pan Evaporation reported were 23.1°C and 79.5mm respectively. There was no report on Sunshine hours.

*No Phenological report.*

## **2.5 COASTAL REGION**

### **2.5.1 Msabaha**

The station recorded dry conditions. The average air temperature and total Pan Evaporation recorded were 30.1°C and 71.0mm respectively. There was no report on sunshine duration.

*Mangoes were at 100% fruit setting stage and in good state. Land preparation for the long rains is still underway.*

### **2.5.2 Mtwapa**

The station received total rainfall amount of 0.01mm. The Mean air temperature and Total Pan Evaporation reported were 29.3°C and 69.5mm respectively. There was no report on and sunshine parameters.

*Mangoes were at flowering stage and in fair state.*

## ANALYSIS OF RAINFALL AND TEMPERATURE CONDITIONS

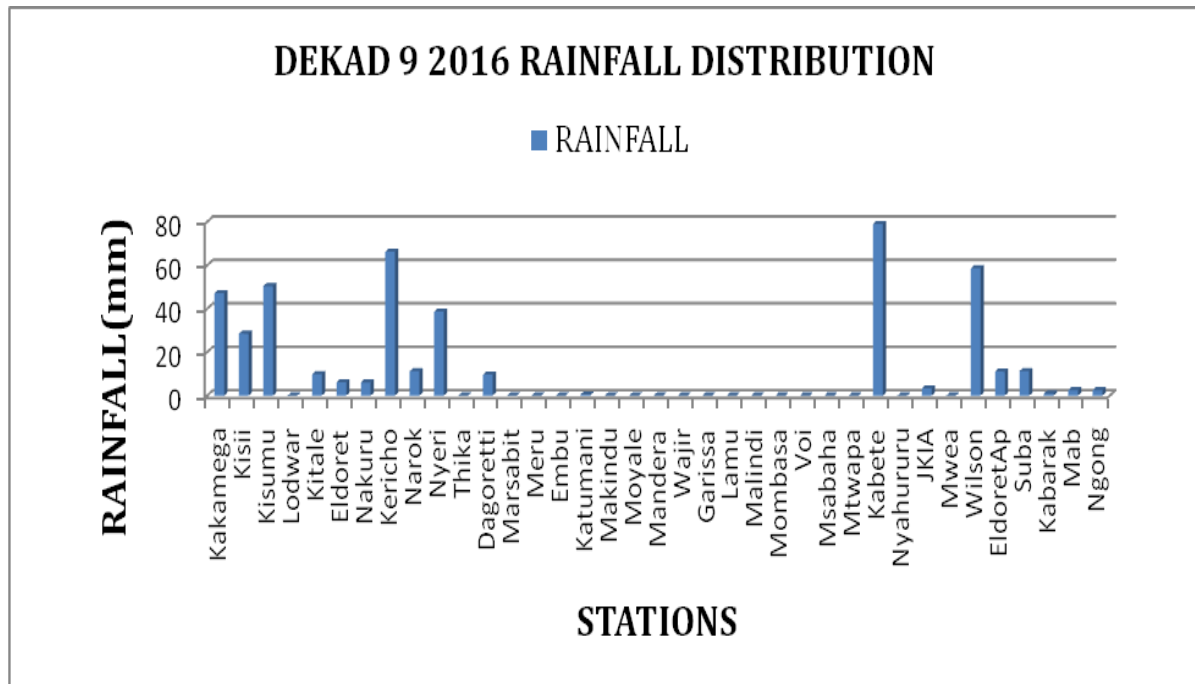


Figure 3.1: Dekadal rainfall totals for dekad 9, 2016

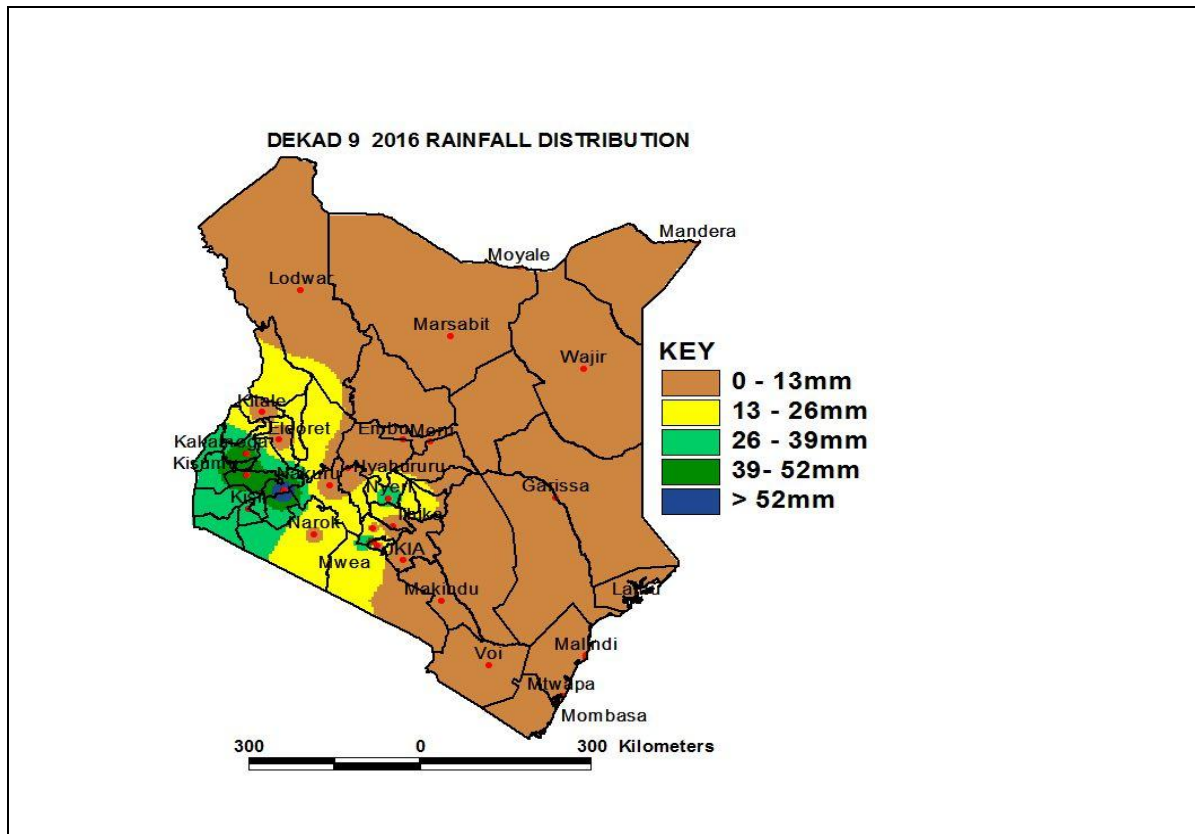


Figure 3.2: Dekadal rainfall distribution for dekad 9, 2016

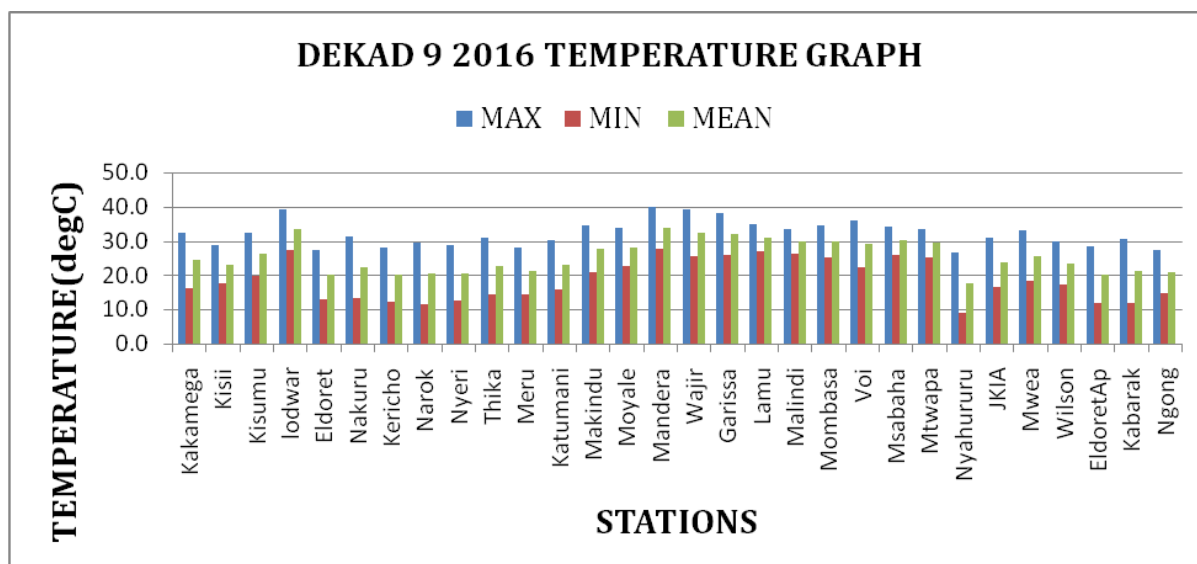


Figure3.3: Maximum, Minimum and Average temperature for dekad 9, 2016

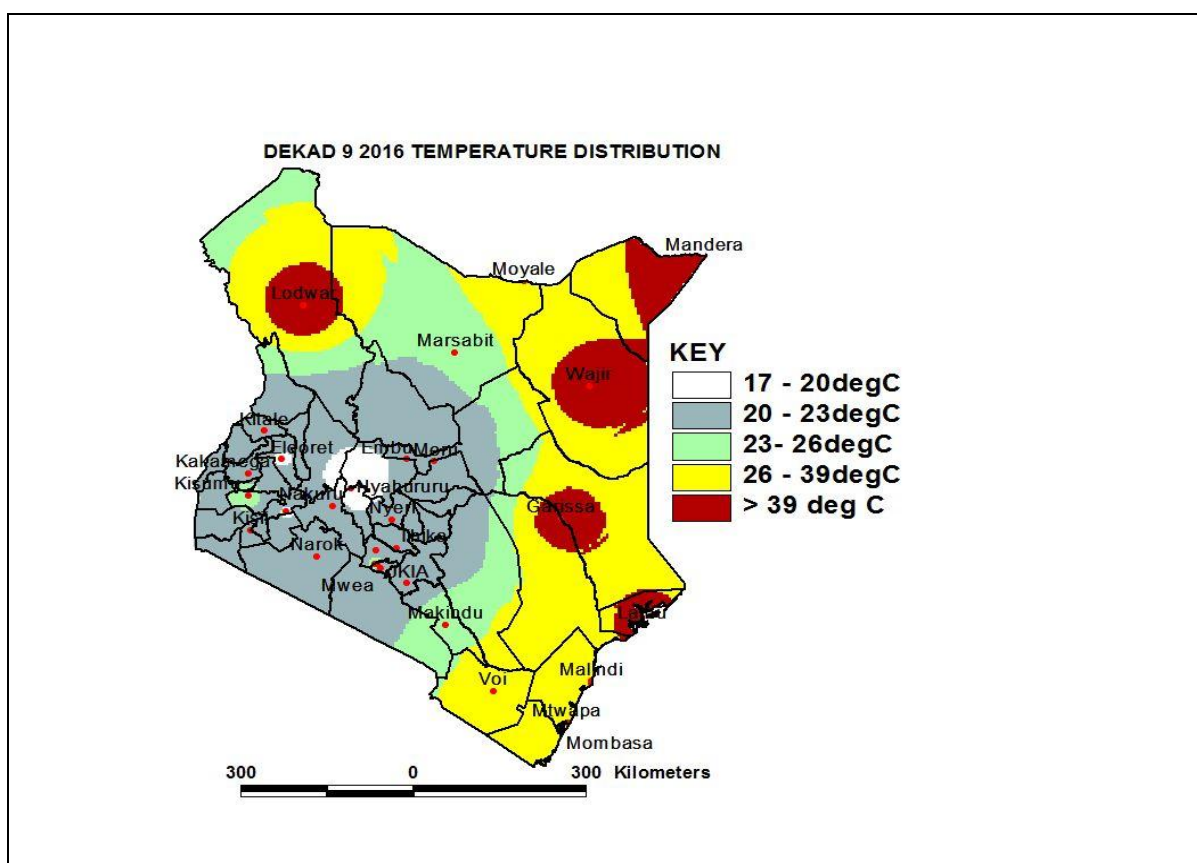


Figure 3.4: Mean temperature distribution for dekad 9, 2016

**3. EXPECTED WEATHER AND CROP CONDITIONS DURING THE NEXT 10 DAYS;  
01<sup>st</sup> - 10<sup>th</sup> April, 2016.**

- ❖ **Counties within the Lake Victoria Basin, Highlands west of the Rift Valley, (Nyamira, Kericho, Bomet, Uasin-Gishu, Nakuru, Narok, Trans Nzoia, Elgeyo Marakwet, Nandi, Laikipia, Kajiado, Vihiga and Busia),** Mornings are expected to experience rains over few places, while the afternoons are expected to experience showers and thunderstorms over few places.

*The Showers will be of great advantage to the growth of the crops that are at emergence stage in Kisii.*

- ❖ **The Northwestern counties (Turkana, West Pokot and Samburu),** Mornings are expected to experience mainly sunny intervals except on the second day of the forecast period when rains over few may be realized. Afternoons are expected to experience mainly sunny intervals with a chance of showers and thunderstorms over few places throughout the forecast period.

*The expected chances of showers will be beneficial to the growth of pasture and vegetation for livestock kept in this region.*

- ❖ **The Central highlands including Nairobi area (counties of Meru, Murang'a, Kiambu, Nyeri, Nairobi, Embu, Nyandarua, Tharaka and Kirinyaga),** Mornings are expected to be cloudy with light rains giving way to sunny intervals throughout the forecast period. Afternoons are expected to experience showers over few places throughout the forecast period.

*The sunny intervals will be of benefit to land preparation, which is still underway in most places.*

- ❖ **Northeastern counties (counties of Marsabit, Mandera, Wajir, Garissa and Isiolo),** Mornings are expected to experience sunny intervals for the first four days of the forecast period, followed by rains over few places thereafter. Afternoons are expected to experience sunny intervals throughout the forecast period.

*The expected rains will replenish the pasture and vegetation for the animals kept in these areas.*

- ❖ **Southeastern lowlands (counties of Taita Taveta, Makueni, Machakos and Kitui),** Mornings are expected to experience rains over few places on the first two days of the forecast period, followed by sunny intervals thereafter. Afternoons are expected to experience showers over few places for the first four days of the forecast period, breaking into sunny intervals for the next three days, followed by showers over few places thereafter.

*The Showers will continue to replenish the vegetation and pasture for the animals kept in these areas.*

- ❖ **In the Coastal strip (counties of Mombasa, Malindi, Kilifi, Lamu, Kwale, etc),** Mornings are expected to experience showers over few places on the first and second day, breaking into sunny intervals for the next three days, followed by morning showers over few places thereafter. Afternoons are expected to experience sunny intervals throughout the forecast period.

*The showers will benefit the mangoes, which are at 100% fruit setting and flowering stages in Msabaha and Mtwapa respectively.*

---

***For feedback or further guidance, Contact:***

Director,  
Kenya Meteorological Services,  
Agro meteorological Advisory Services Division,  
Dagoretti Corner, Ngong Road, P.O. Box 30259, 00100 GPO, Nairobi  
Tel: +254 (0)20 3867880-7/3876957/3873682;  
Fax: +254 (0)20 3876955  
E-mail: [agromet@meteo.go.ke](mailto:agromet@meteo.go.ke);  
Website: [www.meteo.go.ke](http://www.meteo.go.ke)

©2016 Kenya Meteorological Services