



**KENYA METEOROLOGICAL SERVICE
DEKADAL AGROMETEOROLOGICAL BULLETIN**

**WEATHER AND CROP REVIEW FOR DEKAD 13, 2015
01-10 MAY, 2015**

1. HIGHLIGHTS ON RAINFALL AND TEMPERATURE

Rainfall activities continued to increase both in intensity and spatial distribution during the dekad in the country. The highest rainfall amount of 206.0mm was recorded at Lamu station in Coastal region compared to 201.6mm received at Meru station in Eastern region in the previous dekad. The second highest rainfall amount of 186.3mm was recorded at Kitale station in Rift Valley region. Nyanza region reported the highest rainfall amount of 185.8mm at Suba station. Moyale station in North Eastern region recorded the highest rainfall amount of 132.6mm. Eastern region recorded the highest rainfall amount of 109.5mm at Katumani station. In Central region, Nyeri station reported the highest rainfall amount of 87.7mm. Kakamega station in Western region received the highest rainfall amount of 77.1mm. Nairobi region reported the highest rainfall amount of 49.5mm at Wilson station.

Maximum and minimum temperatures continued on a decreasing trend in most stations during the dekad. North-eastern region continued to record the highest maximum temperature of 35.9°C at Mandera station compared to 35.0°C reported at Lodwar station in the previous dekad. The lowest Minimum temperature of 8.8°C was recorded at Nyahururu station in central region compared to 10.0°C reported at the same station in the previous dekad.

For a more comprehensive summary of rainfall and other meteorological parameters, see Figures 3.1 to 3.4 as shown below.

2. CROP AND WEATHER REVIEW FOR DEKAD 13:01- 10 MAY, 2015

2.1 NYANZA AND WESTERN REGIONS

2.1.1 Kakamega

The station received rainfall amount of 77.1mm during the dekad. The mean air temperature and Pan Evaporation recorded were 21.5°C and 3.1mm respectively. The sunshine reported was 4.8hrs/day.

Maize and beans were at emergence stage and in fair state.

2.1.2 Kisii

The station reported rainfall amount of 70.3mm. The mean air temperature recorded was 19.7°C. There was no report on pan evaporation and sunshine parameter.

Maize and beans were at emergence stage and in fair state.

2.2 RIFT VALLEY REGION

2.2.1 Kitale

The station reported rainfall amount of 186.3mm. The mean air temperature and pan evaporation recorded were 19.8°C and 4.1mm respectively. There was no report on sunshine duration.

Maize and Beans were at emergence stage and in good state.

2.2.2 Eldoret-Kapsoya

The station received rainfall amount of 114.8mm. The mean air temperature and pan evaporation recorded were 17.8°C and 4.9mm respectively. There was no record on sunshine duration.

Maize is at emergence stage and in good state.

2.3 CENTRAL KENYA HIGHLANDS AND NAIROBI AREA REGION

2.3.1 Nyeri

The station received rainfall amount of 87.7mm. The average air temperature was 18.9°C. There was no report on pan evaporation and sunshine parameters.

Both Maize and beans were at emergence stage and in fair state.

2.3.2 Kabete

The station received rainfall amount of 43.8mm. There was no report on Mean air temperature, Pan Evaporation and sunshine duration.

Both maize and beans were at emergence stage and in fair state.

2.3.3 Thika

The station recorded rainfall amount of 43.3mm. The mean air temperature recorded was 21.3°C. There was no report on pan evaporation and sunshine duration.

Maize is at emergence stage and in fair state while Beans and Potatoes were at flowering stages and in fair state respectively.

2.3.4 Nyahururu

The station reported rainfall amount of 38.1mm. The mean air temperature recorded was 15.3°C. There was no pan evaporation and sunshine report.

Both Maize and Potatoes were at emergence stage and in fair state.

2.3.5. Dagoretti

The station reported rainfall amount of 48.4mm. The pan evaporation recorded was 3.5mm. There was no report on mean air temperature and sunshine hours.

Maize is at 9th leave stage and in good state while beans are at flowering stage and in poor state due to too much weeds and excessive rainfall.

2.4 EASTERN KENYA REGION

2.4.1 Embu

The station received rainfall amount of 30.4mm. There was no report on mean air temperature, Pan Evaporation and sunshine parameters.

Maize and Beans were at flowering stage and in fair state.

2.4.2 Meru

The station received rainfall amount of 87.8mm. The mean air temperature recorded was 19.3°C. There was no report on Pan Evaporation and sunshine duration.

Maize and Beans were at emergence and flowering stages and in fair state respectively.

2.4.3 Katamani (Machakos)

The station reported rainfall amount of 109.5mm. The average air temperature and Sunshine duration recorded were 20.2°C and 7.1hrs/day respectively. There was no report on pan evaporation.

Maize is at emergence stage while beans are at budding stage and in fair state.

2.5. COASTAL REGION

2.5.1 Msabaha

The station received rainfall amount of 164.2mm. The average air temperature recorded was 27.4°C. There was no report on pan evaporation and sunshine duration.

Maize was at emergence stage and in fair state.

2.5.2 Mtwapa

The station received rainfall amount of 184.6mm. The average air temperature recorded was 26.6°C. There was no report on Pan Evaporation and Sunshine duration.

Mangoes were at fruit setting stage and in fair state while Maize is at emergence stage and in fair state.

3.0 ANALYSIS OF RAINFALL AND TEMPERATURE CONDITIONS.

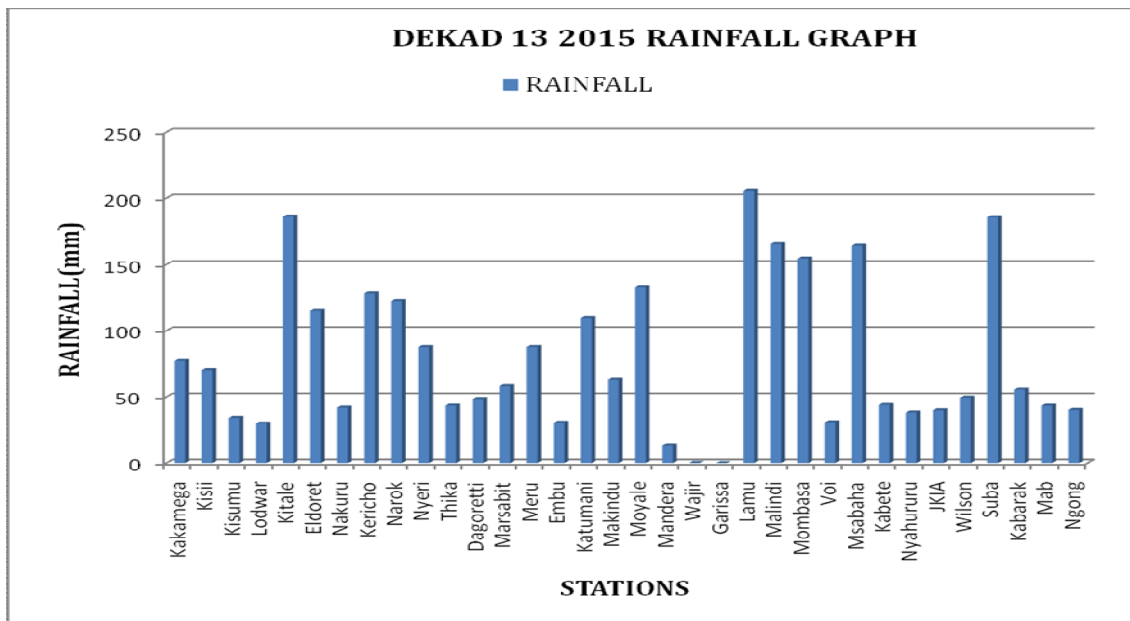


Figure 3.1: Dekadal rainfall totals for 01 –10 MAY 2015

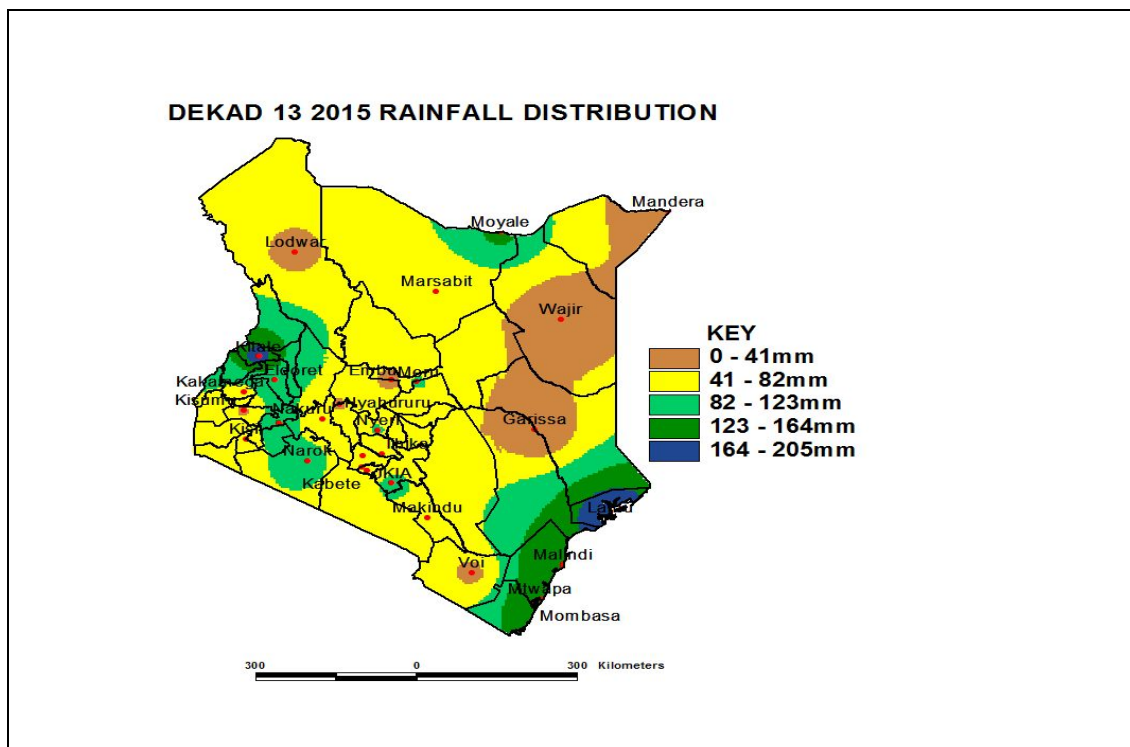


Figure 3.2: Dekadal rainfall distribution for dekad 13, 2015

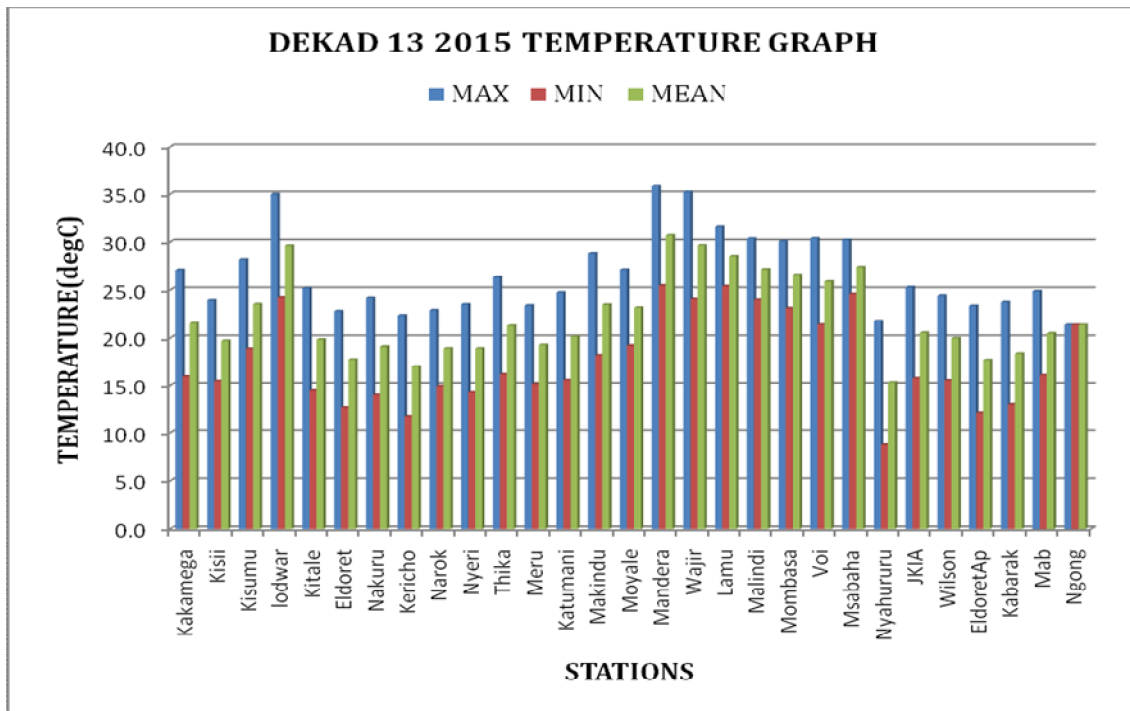


Figure 3.3: Maximum, Minimum and Average temperature for dekad 13, 2015

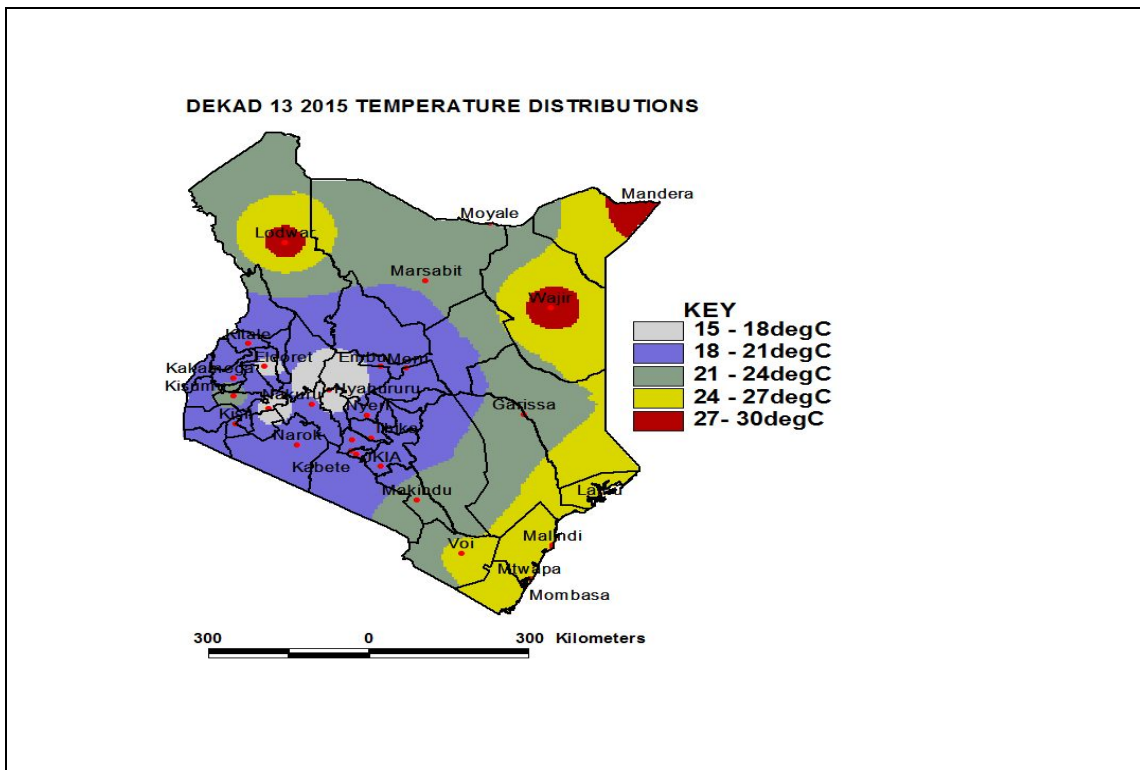


Figure 3.4: Mean temperature distribution for dekad 13, 2015

4. EXPECTED WEATHER AND CROP CONDITIONS DURING THE NEXT 10 DAYS; 11-20 MAY, 2015.

- ❖ **Counties within the Lake Victoria Basin, Highlands west of the Rift Valley, Nyamira, Kericho, Bomet, Uasin-Gishu, Nakuru, Narok, Trans Nzoia, Elgeyo Marakwet, Nandi, Laikipia, Kajiado, Vihiga and Busia),** are expected to experience morning rains over few places in the first day of the forecast period while the remainder of the days will have sunny intervals in the morning. Afternoon/evening showers and thunderstorms over several places are expected on the first day reducing to few places for the remainder of the forecast.

The rains and showers will be of great benefit to the crops, which are mostly in emergence stage in places like Kisii. They will also replenish the soil with moisture that will affect positively on the growth of pasture and vegetation that supports livestock keeping in this region.

- ❖ **The Northwestern counties (Turkana, West Pokot and Samburu),** are expected to experience sunny intervals the entire day throughout the entire forecast period.

The sunny conditions will be of disadvantage to the growth of pasture and vegetation that supports the livestock kept in these regions.

- ❖ **The Central highlands including Nairobi area (counties of Meru, Murang'a, Kiambu, Nyeri, Nairobi, Embu, Nyandarua, Tharaka and Kirinyaga),** are expected to experience cloudy early mornings with light rains over few places giving way to sunny intervals. Afternoon/evening showers are expected over few places throughout the forecast period;

The rains and showers will benefit the crops that are mostly in their emergence stage in places like Meru, Thika etc.

- ❖ **Northeastern counties (counties of Marsabit, Mandera, Wajir, Garissa and Isiolo),** are expected to experience morning rains over few places on the first three days of the forecast period and sunny intervals thereafter. All Afternoons are expected to experience sunny intervals.

The morning rains will continue to replenish the growth of pasture and vegetation that sustain livestock in this region.

- ❖ **Southeastern lowlands (counties of Taita Taveta, Makueni, Machakos and Kitui),** are expected to experience sunny intervals in the morning throughout the forecast period. Afternoon/evening showers are expected over few places throughout the forecast period.

The afternoon showers will continue to replenish the soil with moisture that will enhance the pasture and vegetation growth for livestock rearing in this region and also the maize and Beans that are at emergence and budding stages respectively in places like Katumani.

- ❖ **In the Coastal strip (counties of Mombasa, Malindi, Kilifi, Lamu, Kwale, etc),** are expected to experience high intensity morning showers over several places and afternoon showers over few places throughout forecast period.

The showers will continue benefiting the development of mangoes that are in fruit setting stages in places like Mtwapa and Maize that is at emergence stage in places like Msabaha.

For feedback or further guidance, Contact:

Director,
Kenya Meteorological Services,
Agro meteorological Advisory Services Division,
Dagoretti Corner, Ngong Road, P.O. Box 30259, 00100 GPO, Nairobi
Tel: +254 (0)20 3867880-7/3876957/3873682; Fax: +254 (0)20 3876955
E-mail: agromet@meteo.go.ke;
Website: www.meteo.go.ke

©2015 Kenya Meteorological Services.