

AGROMET BULLETIN



HIGHLIGHTS FOR JANUARY

- ✚ Several stations in eight parishes received below-normal rainfall.
- ✚ Three (3) of thirteen (13) parishes recorded meteorological drought.
- ✚ Near-normal rainfall is forecast for the island, for February to April.
- ✚ Above-normal but comfortable temperatures are still expected for the next three months.

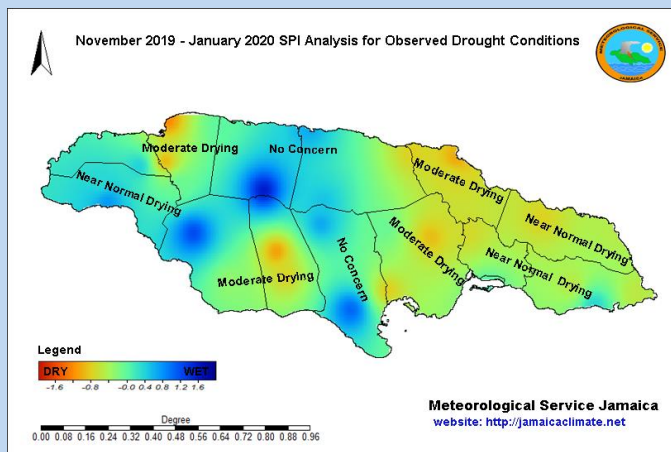
SUMMARY

Several stations in eight of 13 parishes received below-normal rainfall in January. Wet conditions were observed across Trelawny and into bordering areas of northern St. Elizabeth and Manchester as well as, sections of Clarendon. Moderately dry conditions were observed in Manchester, St. Catherine, Kingston & St. Andrew (KSA), St. Mary and St. James, with near-normal dry conditions in sections of St. Thomas and Portland. Meteorological drought conditions were recorded for St. Catherine, KSA and Portland in the December/January period.

What Happened: November 2019 – January 2020

Based on analysis done (image to the right) varying levels of dryness were observed across the island, with moderately dry conditions being experienced in sections of St. Elizabeth, Manchester, St. Catherine, Kingston & St. Andrew (KSA), St. Mary and St. James. Meteorological drought conditions were recorded for St. Catherine, KSA and Portland. There were no concerns, however, for farming communities in southern Trelawny and into bordering areas of northern St. Elizabeth and Manchester, as well as sections of Clarendon which experienced wet conditions. Warmer than normal temperatures, ranging from 1-2 °C were recorded in some areas across the island for the month of January 2020, when compared to January 2019.

Wet and Dry Conditions, November 2019-January 2020



Read more by visiting our website:
<https://www.jamaicacclimate.net/farmers-bulletin>

ABOUT US: This report provides short term precipitation forecasts, as well as drought monitoring products that will assist in making critical decisions about the growing season for crops, as well as irrigation scheduling and water management.

AGROMET BULLETIN



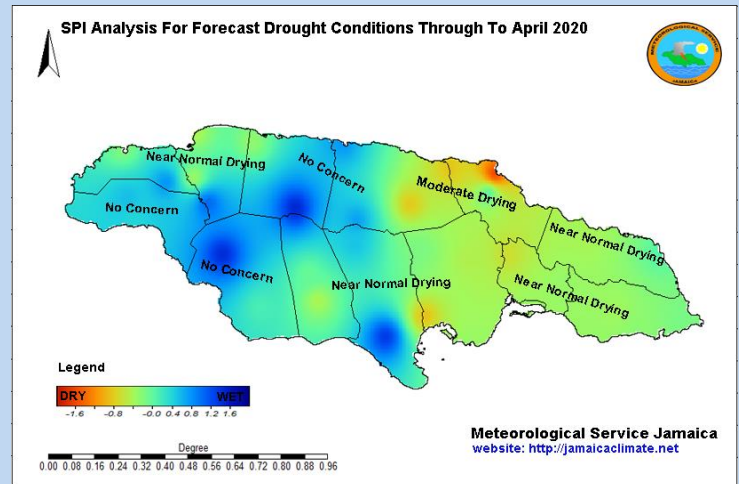
Seasonal Forecast: February- April 2020

For the period of February to April 2020, rainfall amounts are likely to be near-normal, during the transition from the dry season to the early wet season. Based on the projections, there is a possibility that drying conditions could continue over eastern and some central parishes, along with sections of Manchester and St. James. The expectations are that areas in parishes over the western half of the island, especially the Cockpit Country region, could benefit the most from the rainfall over the next three months. Temperatures for the February to April period are likely to be above normal but, comfortable especially during the Winter months of February and March.

Possible Impacts

The forecast for near-normal rainfall could result in conditions remaining dry in many areas especially, farming communities in eastern and some central parishes. Wet conditions should continue in the Cockpit Country region and most of Westmoreland. As the Meteorological Service continues to monitor drought conditions across the island, the advice is for stakeholders, in particularly farmers, to continue employing rainwater harvesting solutions and to put in place other methods to retain soil moisture. The forecast for warmer than normal temperatures should not cause heat stress during the daytime, especially in February and March however, cooler nights could have an impact on livestock and other animals.

Wet and Dry Conditions, February - April 2020



Seasonal Outlook, February- April 2020

JAMAICA	Below (B) %	Normal (N) %	Above (A) %
Rainfall Outlook	33	33	33
Temperature Outlook	15	25	60

CONTACT US:

Meteorological Service, Jamaica, 65 ¼ Half Way Tree Road, Kingston 10

Telephone: 876-929-3700 / 876-929-3706, Email: datarequest@metservice.gov.jm