



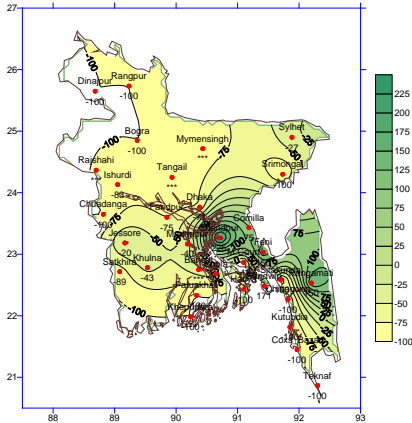
**Government of the People's Republic of Bangladesh
Bangladesh Meteorological Department
(Agro meteorology Division)
Meteorological Complex, Agargaon, Dhaka-1207.**

Agm-3 (2)/2012/09

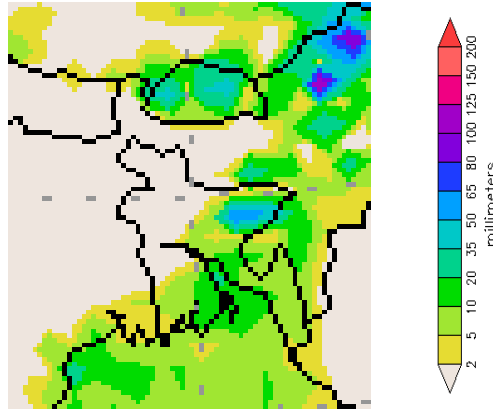
Issue date: 01-03-2012

Weekly Agromet forecast for the period: 01.03.12 to 07.03.2012

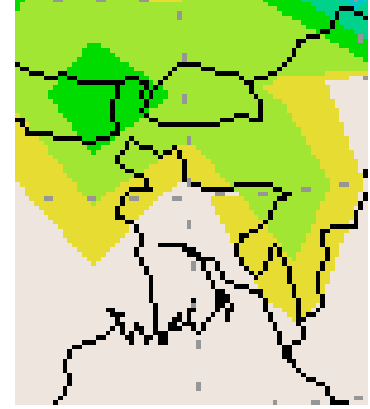
Rainfall Departure as a percentage of Normal
(22-02-2012 to 29-02-2012)



Accumulated Rainfall forecast
(01-03-2012 to 07-03-2012)



Extended Outlook for accumulated
Rainfall (08-03-2012 to 14-03-2012)



Highlights:

Free water loss during the previous week was averaged 3.88 mm per day.
Sunshine hour during the previous was averaged 8.38 hours per day.

Weather forecast and Advisory for the period of 01.03.2012 to 07.03.2012.

Free water loss during the next week is expected to be between 3.75 mm to 4.25 mm per day.
Bright sunshine hour during the next week is expected to be between 8.00 hrs to 8.50 hrs per day.

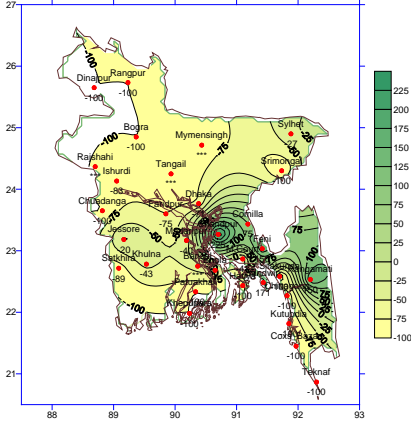
- Trough of low lies over North Bay. Seasonal low lies over South Bay.
- Light rain/Thunder showers may occur at one or two places over Sylhet, Chittagong, Barisal, Rajshahi and Dhaka divisions and weather may remain mainly dry elsewhere over the country during this period.
- Light fog may occur over the country during mid night to till morning.
- Supplementary irrigation may require for Boro crops over the country during this period.
- Slight rise in maximum and minimum temperature is expected over the country during this period.

(Md. Abdur Rahim)
Meteorologist
Agromet Division
Bangladesh Meteorological Department
Phone: 8130305 (Office)

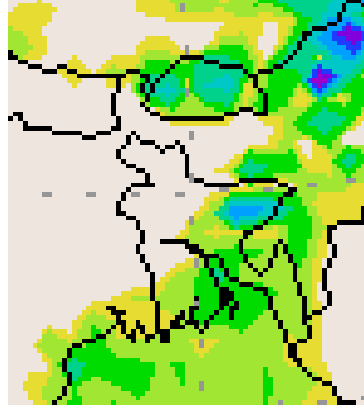
Bangla Version

পূর্বাভাস, সময়: ০১-০৩-২০১২ থেকে ০৭-০৩-২০১২

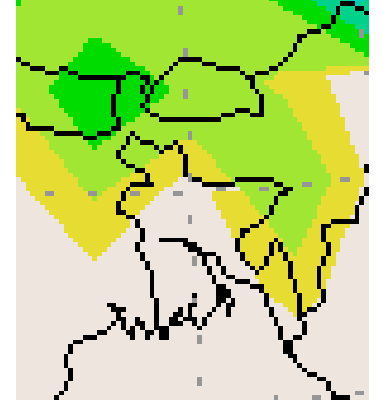
Rainfall Departure as a percentage of Normal
(22-02-2012 to 29-02-2012)



Accumulated Rainfall forecast
(01-03-2012 to 07-03-2012)



Extended Outlook for accumulated
Rainfall (08-03-2012 to 14-03-2012)



প্রধান বৈশিষ্ট্য সমূহঃ-

গত সপ্তাহের দৈনিক বাষ্পীভবনের গড় ৩.৮৮ মিঃ মিঃ ছিল।

গত সপ্তাহের দৈনিক সূর্যকিরণ কালের গড় ৮.৩৮ ঘন্টা ছিল।

আবহাওয়া পূর্বাভাসঃ- ০১-০৩-২০১২ইং থেকে ০৭-০৩-২০১২ ইং পর্যন্ত।

আগামী সপ্তাহের বাষ্পীভবনের দৈনিক গড় মান ৩.৭৫ মিঃমিঃ থেকে ৪.২৫মিঃমিঃ থাকতে পারে।

আগামী সপ্তাহের সূর্যকিরণকালের দৈনিক গড় মান ৮.০০ ঘন্টা থেকে ৮.৫০ ঘন্টা থাকতে পারে।

- নিম্নচাপ বলয়ের বর্ষিতাংশ উত্তর বঙ্গোপসাগরে অবস্থান করছে। একটি মৌসুমী লঘুচাপটি দক্ষিণ বঙ্গোপসাগরে অবস্থান করছে।
- এ সপ্তাহে সিলেট, চট্টগ্রাম, বরিশাল, রাজশাহী ও ঢাকা বিভাগের দু' এক স্থানে হালকা বৃষ্টি/বজ্র বৃষ্টির সম্ভাবনা রয়েছে। দেশের অন্যত্র আবহাওয়া প্রধানতঃ শুষ্ক থাকতে পারে।
- এ সপ্তাহের সারাদেশে মধ্য রাত থেকে সকাল পর্যন্ত হালকা কুয়াশা পড়তে পারে।
- এ সময়ে সারাদেশে বোরো শস্যে সম্পূরক সেচের প্রয়োজন হতে পারে।
- এ সপ্তাহে দিন ও রাতের সর্বোচ্চ ও সর্বনিম্ন তাপমাত্রা সামান্য বৃদ্ধি পেতে পারে।

(মোঃ আব্দুর রহিম)

আবহাওয়াবিদ

কৃষি আবহাওয়া মহাশাখা

বাংলাদেশ আবহাওয়া অধিদপ্তর,

ঢাকা-১২০৭।

Short Weather Description, period: 22.02.2012 to 29.02.2012

Light rainfall was recorded most places over the country during the period.

Maximum rainfall 20 mm was recorded at Feni in Chittagong division which was 150% above normal.

Minimum rainfall 'Trace' was recorded at Mymensingh, Tangail, Rajshahi, and Barisal which were not measurable.

Highest maximum temperature was recorded in Dhaka Division 27.3-34.0°C Chittagong Division 24.9-34.7°C Sylhet Division 24.0-33.0°C, Rajshahi Division 27.4-33.0°C, Rangpur Division 25.0-30.5°C Khulna Division 28.2-34.4°C and Barisal Division 27.6-35.5°C

Extreme maximum temperature was recorded at Madaripur in Dhaka Division 34.0°C, at Sitakunda in Chittagong Division 34.7°C, at Srimongal in Sylhet Division 33.0°C, at Rajshahi in Rajshahi Division 33.0°C, at Dinajpur in Rangpur Division 30.5°C, at Jessore in Khulna 34.4°C and at Khepupara in Barisal Division 35.5°C.

Lowest minimum temperature was recorded in Dhaka Division 12.2-20.7°C, Chittagong Division 13.8-23.0°C, Sylhet Division 8.9-17.5°C, Rajshahi Division 10.0-17.2°C, Rangpur Division 12.8-17.0°C, Khulna Division 10.8-21.6°C and Barisal Division 15.0-21.0°C

Extreme minimum temperature was recorded at Tangail in Dhaka Division 12.2°C, at Rangamati in Chittagong Division 13.8°C, at Srimongal in Sylhet Division 8.9°C, at Ishurdi in Rajshahi Division 10.0°C, at Dinajpur in Rangpur division 12.8°C, at Chuadanga in Khulna Division 10.8°C and at Barisal in Barisal Division 15.0°C.

Rainfall analysis and average temperature :-

Name of the Divisions	Name of the Stations	Total Rainfall in (mm)	Normal Rainfall in (mm)	Deviation in %	Total Rainy days	Average Max Humidity in %	Average Min Humidity in %	Average Max. temp in °C	Average Normal Max. temp in °C	Average Min. temp in °C	Average Normal Min. temp in °C
Dhaka	Dhaka	2	7	-71	02	078	021	31.0	29.5	17.8	17.3
	Mymensingh	Trace	7	95	01	095	033	029	28.1	016	16.2
	Faridpur	1	4	-75	01	094	021	032	29.3	016	16.3
	Madaripur	6	10	-40	02	097	020	31.8	29.8	16.4	16.4
	Tangail	Trace	9	***	01	095	028	30.5	28.6	15	16
Chittagong	Chittagong	0	1	-100	00	**	**	**	29.0	**	17.3
	Sitakunda	0	5	-100	00	**	**	**	29.7	**	16.2
	Rangamati	15	6	150	01	096	015	032	30.1	016	16.6
	Cox'sBazar	0	6	-100	00	083	041	31.5	29.8	18.6	18.4
	Teknaf	0	7	-100	00	**	**	**	29.7	**	18.2
	Hatiya	0	5	-100	00	100	029	30.7	28.7	18.2	17.9
	Sandw ip	19	7	171	01	098	040	30.7	28.4	18.8	18.1
	Kutubdia	0	5	-100	00	096	048	29.3	28.3	18.1	18.5
	Feni	20	8	150	02	096	033	30.9	29.4	17.2	17
	M.Court	4	7	-41	01	100	027	31.2	29.3	17.7	17.4
	Chandpur	13	4	225	02	095	031	32	29.1	17.6	16.9
Sylhet	Comilla	14	8	75	02	097	037	29.8	28.7	17	16.7
	Sylhet	8	11	-27	01	082	027	30.6	28.6	16.1	15.9
Rajshahi	Srimongal	0	14	-100	00	094	033	31.6	29.2	11.6	14.6
	Rajshahi	Trace	4	***	00	096	019	31.3	29.4	13.8	14.6
	Bogra	0	4	-100	00	094	019	28	28.5	13.9	15.5
Rangpur	Ishurdi	1	6	-83	01	097	016	31.2	29.1	13.8	14.1
	Rangpur	0	3	-100	00	090	035	28.1	27.1	14.4	14.1
Khulna	Dinajpur	0	2	-100	00	094	018	28.4	27.6	15.4	14.1
	Khulna	4	7	-43	01	100	025	32.2	30	17.8	16.9
	Jessore	4	5	-20	01	**	**	**	30.5	**	16.2
	Chuadanga	0	5	-100	00	095	021	31.6	30	13.9	15.7
Barisal	Satkhira	1	9	-89	02	098	031	30.8	30.1	17.3	17.2
	Barisal	Trace	5	***	02	099	028	32.2	29.7	17.3	16.6
	Bhola	**	8	***	**	**	**	**	29.6	**	17.7
	Patuakhali	0	6	-100	00	099	028	033.2	29.8	018.1	17.9
	Khepupara	0	11	-100	00	098	016	034	29.7	019	18.3

