



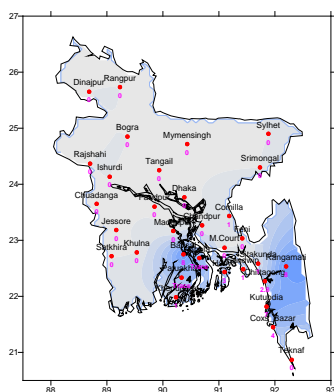
Government of the People's Republic of Bangladesh  
Bangladesh Meteorological Department  
(Agro-meteorology Division)  
Meteorological Complex, Agargaon, Dhaka-1207.

Agm-3 (2)/2015/ 44

Issue date: 22-11-2015

**Forecast for the period: 22.11.2015 to 30.11.2015**

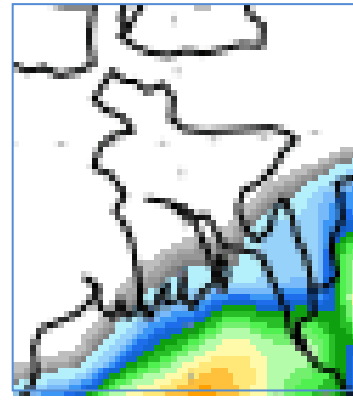
Spatial distribution of Rainfall  
(Period: 15-11-2015 to 21-11-2015)



Accumulative Rainfall forecast  
(Period: 22-11-2015 to 30-11-2015)



Extended Outlook for accumulative rain  
(Period: 01-12-2015 to 07-12-2015)



**Highlights:**

Country average of bright sunshine hour was 5.40 hours per day during last week.

Country average of free water loss during the previous week was averaged 2.69 mm per day.

**Weather Forecast and Advisory for the Period of 22.11.2015 to 30.11.2015.**

Bright sunshine hour is expected to be between 5.50 to 6.50 hours per day during this week.

Average of free water loss during the next week is expected to be between 2.5 mm to 3.5 mm per day.

- Ridge of sub-continental high extends up to Bihar and adjoining area. Seasonal low lies over South Bay.
- Weather may remain mainly dry with temporary partly cloudy sky. Light to moderate fog may occur at places over northern part and the river basins of the country during late night till morning.
- Slight fall in maximum and minimum temperature are expected over the country during this period.

(Mahnaz Khan)

Deputy Director

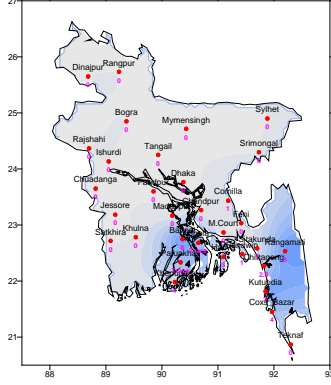
For Director

Phone: 8130305(Office)

## Bengali Version

পূর্বাভাস, সময়: ২২-১১-২০১৫ থেকে ৩০-১১-২০১৫

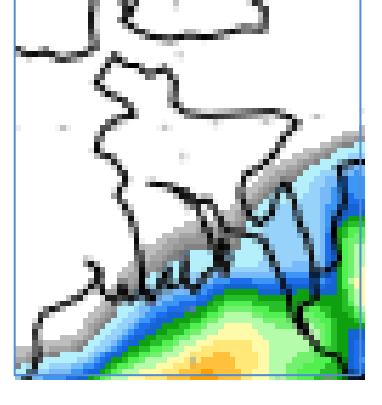
Spatial distribution of Rainfall  
(Period: 15-11-2015 to 21-11-2015)



Accumulative Rainfall forecast  
(Period: 22-11-2015 to 30-11-2015)



Extended Outlook for accumulative rain  
(Period: 01-12-2015 to 07-12-2015)



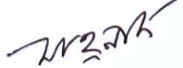
### প্রধান বৈশিষ্ট্য সমূহঃ-

গত সপ্তাহে দেশের দৈনিক উজ্জ্বল সূর্যকিরণ কালের গড় ৫.৪০ ঘন্টা ছিল ।  
গত সপ্তাহে দেশের দৈনিক বাষ্পীভবনের গড় ২.৬৯ মিঃ মিঃ ছিল ।

### আবহাওয়ার পূর্বাভাসঃ- ২২-১১-২০১৫ থেকে ৩০-১১-২০১৫ ইং পর্যন্ত ।

এ সপ্তাহে দৈনিক উজ্জ্বল সূর্য কিরণ কাল ৫.৫০ থেকে ৬.৫০ ঘন্টার মধ্যে থাকতে পারে ।  
আগামী সপ্তাহের বাষ্পীভবনের দৈনিক গড় মান ২.৫ মিঃ মিঃ থেকে ৩.৫ মিঃমিঃ থাকতে পারে ।

- উপমহাদেশীয় উচ্চচাপ বলয়ের বর্ধিতাংশ বিহার ও তৎসংলগ্ন এলাকা পর্যন্ত বিস্তৃত । স্বাভাবিক লঘুচাপ দক্ষিণ বঙ্গোপসাগরে অবস্থান করছে ।
- এ সময়ে সারাদেশের আকাশ আংশিক মেঘলাসহ আবহাওয়া প্রধানতঃ শুষ্ক থাকতে পারে । এসময়ে শেষরাত থেকে সকাল পর্যন্ত দেশের উত্তরাঞ্চল ও নদী অববাহিকায় হালকা থেকে মাঝারী ধরনের কুয়াশা পড়তে পারে ।
- এ সময়ে সারাদেশের সর্বোচ্চ ও সর্বনিম্ন তাপমাত্রা সামান্য হ্রাস পেতে পারে ।

  
(মাহ্নাজ খান)  
উপ-পরিচালক  
পরিচালকের পক্ষে  
ফোনঃ ৮১৩০৩০৫(দপ্তর)

## Short Weather Description, Period: 01.11.2015 to 07.11.2015

Weather was mainly dry over the country during this period.

Maximum rainfall 8 mm was recorded at **Barisal** in Barisal division which was 14% above normal and minimum rainfall "Trace" was recorded at **Bhola & Patuakhali** in Barisal division which was not measurable.

Highest maximum temperature was recorded in Dhaka Division 27.0-32.0°C, Chittagong Division 23.4-33.4°C, Sylhet Division 26.3-32.6°C, Rajshahi Division 29.4-32.2°C, Rangpur Division 27.5-30.8°C, Khulna Division 27.0-32.0°C and Barisal Division 26.5-32.4°C.

Extreme maximum temperature was recorded at Mymensingh in Dhaka Division 32.0°C, at Sitakunda in Chittagong Division 33.4°C, at Sylhet in Sylhet Division 32.6°C, at Bogra in Rajshahi Division 32.2°C, at Dinajpur in Rangpur Division 30.8°C, at Khulna in Khulna Division 32.0°C and at Bhola in Barisal Division 32.4°C.

Lowest minimum temperature was recorded in Dhaka Division 16.0-22.0°C, Chittagong Division 17.0-23.6°C, Sylhet Division 14.5-20.4°C, Rajshahi Division 16.5-20.4°C, Rangpur Division 15.6-19.8°C, Khulna Division 16.2-22.6°C and Barisal Division 17.5-22.6°C.

Extreme minimum temperature was recorded at Mymensingh in Dhaka Division 16.0°C, at Sitakunda in Chittagong Division 17.0°C, at Srimongal in Sylhet Division 14.5°C, at Ishurdi in Rajshahi Division 16.5°C, at Dinajpur in Rangpur division 15.6°C, at Jessore in Khulna Division 16.2°C and at Bhola in Barisal Division 17.5°C.

### **Rainfall analysis and average temperature: -**

Name of the Divisions	Name of the Stations	Total Rainfall in (mm)	Normal Rainfall in (mm)	Deviation in %	Total Rainy days	Average Max Humidity in %	Average Min Humidity in %	Average Max. temp in °C	Average Normal Max. temp in °C	Average Min. temp in °C	Average Normal Min. temp in °C
<b>Dhaka</b>	Dhaka	00	3	-100	00	093	046	30.0	29.6	20.4	18.8
	Mymensingh	00	2	-100	00	098	057	29.8	29.3	18.4	17.7
	Faridpur	00	7	-100	00	097	053	30.1	29.1	19.5	18.9
	Madaripur	00	6	-100	00	**	**	**	29.5	**	18.2
	Tangail	00	8	-100	00	096	051	30.4	29.3	18.5	18.0
<b>Chittagong</b>	Chittagong	03	11	-75	02	**	**	29.5	29.8	20.6	19.5
	Sitakunda	01	11	-91	01	**	**	**	30.1	**	18.1
	Rangamati	08	9	-11	02	098	038	28.6	29.2	19.5	19.2
	Cox'sBazar	04	15	-73	02	097	060	30.0	30.2	21.5	20.5
	Teknaf	00	24	-100	00	098	049	31.0	30.0	21.1	20.4
	Hatiya	03	10	-70	02	099	066	29.9	28.9	19.9	19.5
	Sandwip	01	7	-86	01	097	060	29.7	29.0	19.8	19.4
	Kutubdia	07	15	-53	02	095	064	29.3	29.4	21.1	19.7
	Feni	00	7	-100	00	098	059	29.7	29.5	19.4	18.0
	M.Court	00	7	-100	00	099	061	29.2	29.0	23.0	19.6
	Chandpur	00	4	-100	00	096	060	30.2	29.0	20.8	19.3
Comilla	01	9	-89	01	096	058	29.8	29.4	19.9	17.6	
<b>Sylhet</b>	Sylhet	00	4	-100	00	093	051	30.0	29.3	18.8	18.0
	Srimongal	00	7	-100	00	100	036	30.1	28.9	16.5	15.7
<b>Rajshahi</b>	Rajshahi	00	0	***	00	099	045	30.7	29.3	18.3	17.1
	Bogra	00	1	-100	00	096	035	30.9	30.2	19.2	17.8
	Ishurdi	00	0	***	00	**	**	**	29.4	**	17.1
<b>Rangpur</b>	Rangpur	00	1	-100	00	095	054	28.7	28.3	19.1	17.0
	Dinajpur	00	0	***	00	099	042	29.5	28.8	18.0	16.2
<b>Khulna</b>	Khulna	00	5	-100	00	098	054	30.4	29.6	20.8	18.9
	Jessore	00	5	-100	00	098	047	31.2	30.1	18.3	17.3
	Chuadanga	00	2	-100	00	097	048	30.6	29.7	18.3	17.5
	Satkhira	00	6	-100	00	**	**	**	29.9	**	17.9
<b>Barisal</b>	Barisal	08	7	14	02	029	029	29.4	29.7	20.1	18.3
	Bhola	Trace	6	***	01	**	**	**	29.6	**	18.7
	Patuakhali	Trace	8	***	01	100	061	29.8	29.3	20.5	19.6
	Khepupara	01	13	-92	01	099	057	30.2	29.2	19.9	19.3

N.B. Analyses contained in this bulletin are based on preliminary un-checked data. \*\* Data not received. \*\*\* Data not available.