



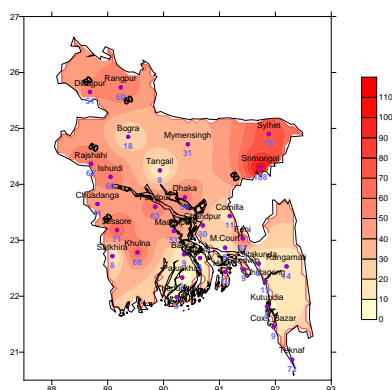
Government of the Peoples' Republic of Bangladesh
Bangladesh Meteorological Department
(Agro-meteorology Division)
Meteorological Complex, Agargaon, Dhaka-1207.

Agm-3 (2)/2015/ 20

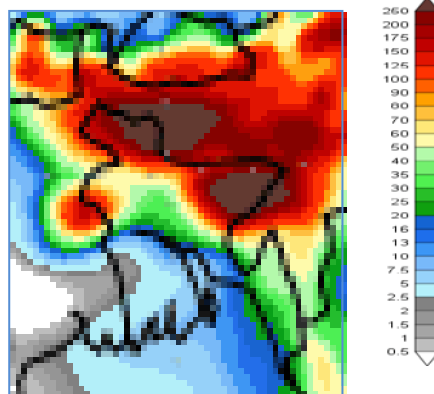
Issue date: 25-05-2015

Forecast for the period: 25.05.2015 to 31.05.2015

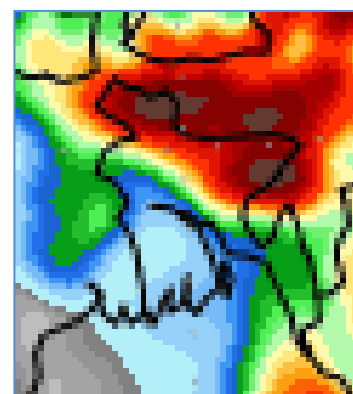
Spatial distribution of Rainfall
(Period: 15-05-2015 to 21-05-2015)



Accumulative Rainfall forecast
(Period: 25-05-2015 to 31-05-2015)



Extended Outlook for accumulative rain
(Period: 01-06-2015 to 07-06-2015)



Highlights:

Country average of bright sunshine hour was 7.30 hours per day during the last week.

Country average of free water loss during the previous week was averaged 4.36 mm per day.

Weather Forecast and Advisory for the Period of 25.05.2015 to 31.05.2015.

Bright sunshine hour is expected to be between 5.50 to 6.50 hours per day during this week.

Average of free water loss during the next week is expected to be between 4.0 mm to 5.0 mm per day.

- A low lies over Bihar and adjoining area, extending its trough to North Bay. Southwest monsoon has advanced up to Yangoon coast.
- Light (4-10 mm) to moderate (10-22 mm) rain/thunder shower with temporary gusty or squally wind speed 45-60 km per hour or more may occur at many places over Chittagong, Sylhet, Rangpur and Rajshahi divisions and few places over Dhaka, Barisal & Chittagong divisions during this period.
- Day and night temperatures may remain nearly unchanged over the country during the first half and slight rise in day and night temperatures are expected over the country during the second half of this period.

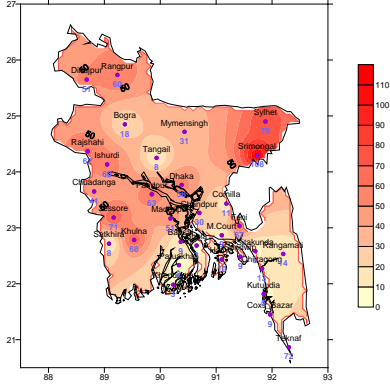
(Md. Shameem Hassan Bhuiyan)
Meteorologist
For Director
Phone: 8130305(Office)

N.B-Visit BMD Website – www.bmd.gov.bd for colored digital map of weekly rainfall forecast.

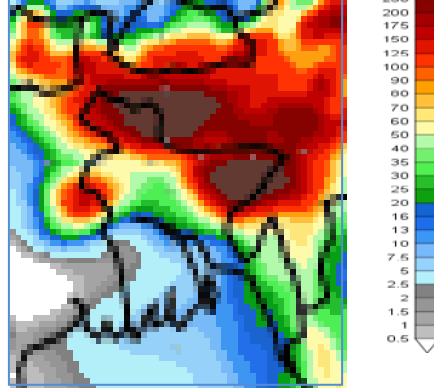
Bengal Version

পূর্বাভাস, সময়: ২৫-০৫-২০১৫ থেকে ৩১-০৫-২০১৫

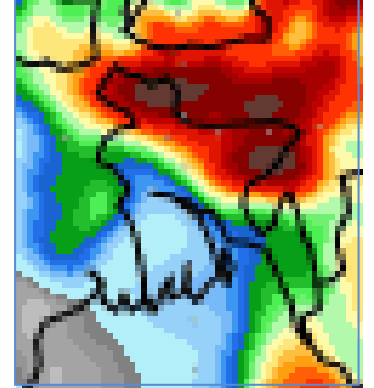
Spatial distribution of Rainfall
(Period: 15-05-2015 to 21-05-2015)



Accumulative Rainfall forecast
(Period: 25-05-2015 to 31-05-2015)



Extended Outlook for accumulative rain
(Period: 01-06-2015 to 07-06-2015)



প্রধান বৈশিষ্ট্য সমূহঃ-

গত সপ্তাহে দেশের দৈনিক উজ্জ্বল সূর্যকিরণ কালের গড় ৭.৩০ ঘন্টা ছিল।

গত সপ্তাহে দেশের দৈনিক বাষ্পীভবনের গড় ৪.৩৬ মিঃ মিঃ ছিল।

আবহাওয়া পূর্বাভাসঃ-২৫-০৫-২০১৫ থেকে ৩১-০৫-২০১৫ ইং পর্যন্ত।

এ সপ্তাহে দৈনিক উজ্জ্বল সূর্য কিরণ কাল ৫.৫০ থেকে ৬.৫০ ঘন্টার মধ্যে থাকতে পারে।

আগামী সপ্তাহের বাষ্পীভবনের দৈনিক গড় মান ৪.০ মিঃ মিঃ থেকে ৫.০ মিঃমিঃ থাকতে পারে।

- একটি লঘুচাপ বিহার ও তৎসংলগ্ন এলাকায় অবস্থান করছে যার বর্ধিতাংশটি উত্তর বঙ্গোপসাগর পর্যন্ত বিস্তৃত। দক্ষিণ পশ্চিম মৌসুমী বায়ু ইয়াঙ্গুন উপকূল পর্যন্ত অগ্রসর হয়েছে।
- এ সময়ে চট্টগ্রাম, সিলেট, রংপুর ও রাজশাহী বিভাগের অনেক স্থানে এবং ঢাকা, বরিশাল ও খুলনা বিভাগের কিছু কিছু স্থানে ঘন্টায় ৪৫-৬০ কিঃমিঃ বা আরও অধিক বেগে অস্থায়ী দমকা/ঝড়ো হাওয়াসহ হালকা (৪-১০মিঃমিঃ) থেকে মাঝারী (১০-২২ মিঃমিঃ) ধরনের বৃষ্টি/ বজ্রবৃষ্টি হতে পারে।
- এ সময়ের প্রথমার্ধে সারাদেশের দিন ও রাতের তাপমাত্রা প্রায় অপরিবর্তিত থাকতে পারে এবং দ্বিতীয়ার্ধে সামান্য বৃদ্ধি পেতে পারে।

(মোঃ শামীম হাসান ভূইয়া)
আবহাওয়াবিদ
পরিচালকের পক্ষে
ফোনঃ ৮১৩০৩০৫(দপ্তর)

Short Weather Description, Period: 15.05.2015 to 21.05.2015

Light to moderate rainfall was recorded at most places over the country during the period. Maximum rainfall 108 mm was recorded at Srimongal in Sylhet division which was 23% above normal and minimum rainfall 02 mm was recorded at Patuakhali in Barisal division which was 96% below normal.

Highest maximum temperature was recorded in Dhaka Division 31.5-36.3°C, Chittagong Division 30.5-36.6°C, Sylhet Division 27.4-36.1°C, Rajshahi Division 32.3-37.8°C, Rangpur Division 30.8-37.3°C, Khulna Division 32.7-38.7°C and Barisal Division 33.2-36.5°C.

Extreme maximum temperature was recorded at Madaripur in Dhaka Division 36.3°C, at Comilla in Chittagong Division 36.6°C, at Sylhet in Sylhet Division 36.1°C, at Rajshahi in Rajshahi Division 37.8°C, at Dinajpur in Rangpur Division 37.3°C, at Jessore in Khulna Division 38.4°C and at Barisal & Patuakhali in Barisal Division 36.5°C.

Lowest minimum temperature was recorded in Dhaka Division 22.4-28.5°C, Chittagong Division 23.1-28.8°C, Sylhet Division 22.4-26.6°C, Rajshahi Division 23.0-28.5°C, Rangpur Division 23.0-27.4°C, Khulna Division 23.2-28.5°C and Barisal Division 24.0-28.5°C.

Extreme minimum temperature was recorded at Madaripur in Dhaka Division 22.4°C, at Chandpur in Chittagong Division 23.1°C, at Srimongal in Sylhet Division 22.4°C, at Bogra in Rajshahi Division 23.0°C, at Rangpur in Rangpur division 23.0°C, at Jessore in Khulna Division 23.2°C and at Barisal in Barisal Division 24.0°C.

Rainfall analysis and average temperature: -

Name of the Divisions	Name of the Stations	Total Rainfall in (mm)	Normal Rainfall in (mm)	Deviation in %	Total Rainy days	Average Max Humidity in %	Average Min Humidity in %	Average Max. temp in °C	Average Normal Max. temp in °C	Average Min. temp in °C	Average Normal Min. temp in °C
Dhaka	Dhaka	58	65	-11	05	089	052	34.6	33.4	26.7	24.7
	Mymensingh	31	67	-54	04	094	062	33.5	32.0	25.9	24.1
	Faridpur	63	58	9	02	096	058	035	33.6	25.7	24.4
	Madaripur	51	45	13	02	096	053	035	33.9	025	24.7
	Tangail	8	49	-84	02	094	057	34.5	32.9	24.6	24.0
Chittagong	Chittagong	13	67	-81	03	**	**	034	32.4	027	24.9
	Sitakunda	5	95	-95	02	**	**	**	32.5	**	24.7
	Rangamati	14	69	-80	01	099	042	33.9	33.0	২৫	24.1
	Cox'sBazar	9	69	-87	02	092	063	34.0	32.7	26.4	25.4
	Teknaf	72	73	-1	03	096	057	33.0	32.0	026	25.5
	Hatiya	10	60	-83	02	099	068	33.9	32.2	26.2	25.4
	Sandw ip	9	69	-87	01	**	**	**	31.6	**	24.9
	Kutubdia	5	75	-93	02	**	**	**	32.1	**	25.5
	Feni	67	84	-20	02	096	060	34.2	32.6	26.0	24.7
	M.Court	9	70	-87	01	096	068	35.2	32.8	026	25.1
	Chandpur	30	57	-47	05	092	059	35.4	33.1	25.7	24.7
	Comilla	11	71	-85	02	**	**	**	32.7	**	24.3
Sylhet	Sylhet	79	131	-40	04	095	066	32.6	31.3	24.4	23.0
	Srimongal	108	88	23	04	098	053	034	32.5	24.2	23.3
Rajshahi	Rajshahi	62	31	***	02	097	061	35.6	34.9	25.8	24.5
	Bogra	18	42	-57	03	095	050	34.4	33.4	24.8	24.1
	Ishurdi	60	35	71	02	098	051	34.8	34.5	25.8	24.2
Rangpur	Rangpur	60	63	-5	04	**	**	**	31.7	**	23.3
	Dinajpur	51	47	9	03	093	039	34.0	32.5	25.1	23.2
Khulna	Khulna	68	44	55	03	096	056	036	34.5	26.1	25.4
	Jessore	71	36	97	02	094	048	36.0	35.6	25.7	25.0
	Chuadanga	41	36	14	03	095	059	035	35.6	26.0	25.0
	Satkhira	8	29	-72	04	**	**	**	35.5	**	25.7
Barisal	Barisal	9	38	-76	02	098	056	35.2	33.3	26.0	25.0
	Bhola	3	51	-94	02	**	**	**	32.7	**	25.2
	Patuakhali	2	57	-96	01	095	059	35.5	33.2	26.1	25.5
	Khepupara	3	53	-94	02	093	063	34.6	32.7	26.7	25.8

N.B. Analyses contained in this bulletin are based on preliminary un-checked data. ** Data not received. *** Data not available.