



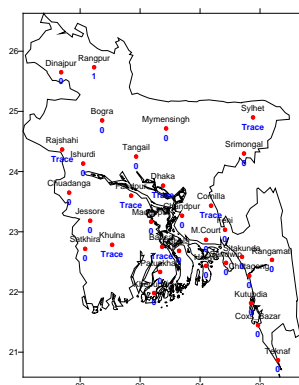
Government of the Peoples' Republic of Bangladesh
Bangladesh Meteorological Department
(Agro-meteorology Division)
Meteorological Complex, Agargaon, Dhaka-1207.

Agm-3 (2)/2014/ 12

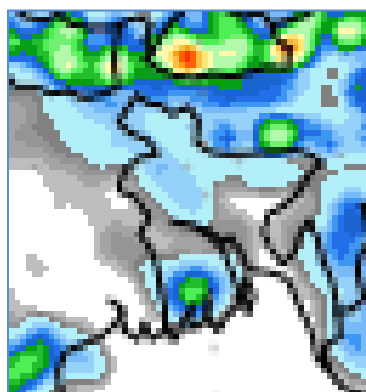
Issue date: 22-03-2015

Forecast for the period: 22.03.2015 to 31.03.2015

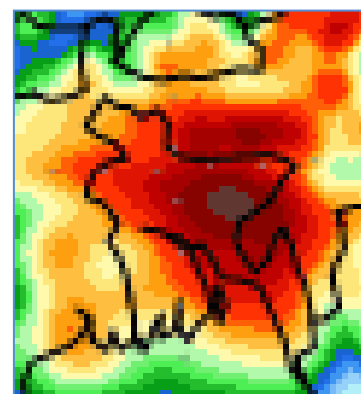
Spatial distribution of Rainfall
(Period: 15-03-2015 to 21-03-2015)



Accumulative Rainfall forecast
(Period:22-03-2015 to 31-03-2015)



Extended Outlook for accumulative rain
(Period:01-04-2015 to 07-04-2015)



Highlights:

Country average of bright sunshine hour was 8.71 hours per day during the last week.

Country average of free water loss during the previous week was averaged 4.60 mm per day.

Weather forecast and Advisory for the period of 22.03.2015 to 31.03.2015.

Bright sunshine hour is expected to be between 7.50 and 8.50 hours per day during this week.

Average of free water loss during the next week is expected to be between 3.75 mm and 4.75 mm per day.

- Seasonal low lies over South Bay.
- Weather may remain mainly dry with partly cloudy sky over the country during the first half of this period. Isolated light (4-10 mm) to moderate (10-22 mm) rain/thunder shower with temporary gusty or squally wind speed 30-40 km per hour or more may occur at few places over Rangur, Rajshahi and khulna divisions and one or two places elsewhere over the country during the end of this period.
- Day and night temperatures may remain nearly unchanged over the country during the first half and slight fall in day and night temperatures are expected over the country during the end of this period.

(Mahnaz Khan)

Deputy Director

For Director

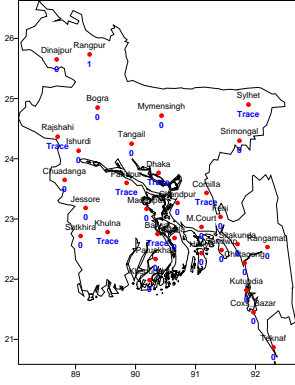
Phone: 8130305(Office)

N.B-Visit BMD Website – www.bmd.gov.bd for colored digital map of weekly rainfall forecast.

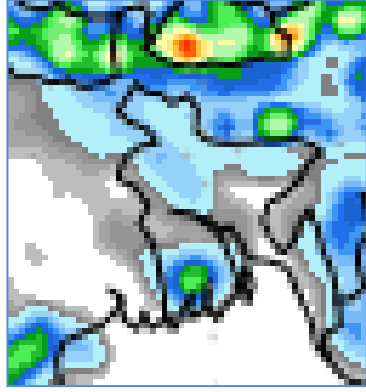
Bengal Version

পূর্বাভাস, সময়: ২২-০৩-২০১৫ থেকে ৩১-০৩-২০১৫

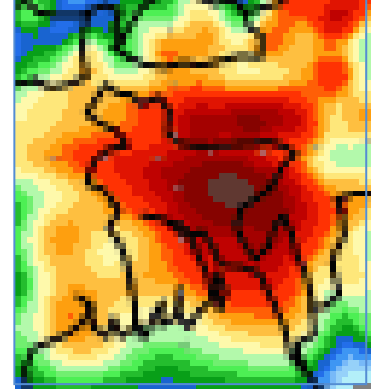
Spatial distribution of Rainfall
(Period: 15-03-2015 to 21-03-2015)



Accumulative Rainfall forecast
(Period:22-03-2015 to 31-03-2015)



Extended Outlook for accumulative rain
(Period:01-04-2015 to 07-03-2015)



প্রধান বৈশিষ্ট্য সমূহঃ-

গত সপ্তাহে দেশের দৈনিক উজ্জ্বল সূর্যকিরণ কালের গড় ৮.৭১ ঘন্টা ছিল।

গত সপ্তাহে দেশের দৈনিক বাষ্পীভবনের গড় ৪.৬০ মিঃ মিঃ ছিল।

আবহাওয়া পূর্বাভাসঃ-১৫-০৩-২০১৫ থেকে ২২-০৩-২০১৫ ইং পর্যন্ত।

এ সপ্তাহে দৈনিক উজ্জ্বল সূর্য কিরণ কাল ৭.৫০ থেকে ৮.৫০ ঘন্টার মধ্যে থাকতে পারে।

আগামী সপ্তাহের বাষ্পীভবনের দৈনিক গড় মান ৩.৭৫ মিঃ মিঃ থেকে ৪.৭৫ মিঃমিঃ থাকতে পারে।

- মৌসুমী লঘুচাপটি দক্ষিণ বঙ্গোপসাগরে অবস্থান করছে।
- এ সপ্তাহের প্রথমার্ধে সারাদেশের আকাশ আংশিক মেঘলাসহ আবহাওয়া প্রধানতঃ শুষ্ক থাকতে পারে। সেই সাথে এসময়ের শেষাংশে রংপুর, রাজশাহী ও খুলনা বিভাগের কিছু কিছু স্থানে এবং দেশের অন্যত্র দু'এক স্থানে বিক্ষিপ্ত ভাবে ঘন্টায় ৩০-৪০ কিঃমিঃ বা আরও অধিক বেগে দমকা/ঝড়ো হাওয়াসহ হালকা (৪-১০মিঃমিঃ) থেকে মাঝারী (১০-২২ মিঃমিঃ) ধরণের বৃষ্টি/ বজ্রবৃষ্টি হতে পারে।
- এ সময়ের প্রথমার্ধে দিন ও রাতের তাপমাত্রা প্রায় অপরিবর্তিত থাকতে পারে এবং দ্বিতীয়ার্ধে সামান্য হ্রাস পেতে পারে।

(মাহ্নাজ খান)

উপ-পরিচালক

পরিচালকের পক্ষে

ফোনঃ ৮১৩০৩০৫(দপ্তর)

Short Weather Description, Period: 15.03.2015 to 21.03.2015

Weather was mainly dry over the country during the period.

Highest maximum temperature was recorded in Dhaka Division 28.5-35.5°C Chittagong Division 31.0-37.0°C, Sylhet Division 31.4-35.0°C, Rajshahi Division 29.3-34.7°C, Rangpur Division 27.0-33.6°C Khulna Division 31.0-35.2°C and Barisal Division 32.2-35.5°C.

Extreme maximum temperature was recorded at Faridpur in Dhaka Division 35.5°C, at Cox'sBazar in Chittagong Division 37.0°C, at Sylhet in Sylhet Division 35.0°C, at Rajshahi in Rajshahi Division 34.7°C, at Dinajpur in Rangpur Division 33.6°C, at Jessore in Khulna Division 35.2°C and at Patuakhali in Barisal Division 35.5°C.

Lowest minimum temperature was recorded in Dhaka Division 14.8-24.4°C, Chittagong Division 16.8-24.4°C, Sylhet Division 12.4-21.5°C, Rajshahi Division 14.8-21.3°C, Rangpur Division 15.0-19.4°C, Khulna Division 15.2-23.4°C and Barisal Division 15.7-22.7°C

Extreme minimum temperature was recorded at Madaripur in Dhaka Division 14.8°C, at Comilla in Chittagong Division 16.8°C, at Srimongal in Sylhet Division 12.4°C, at Rajshahi & Ishurdi in Rajshahi Division 14.8°C, at Dinajpur in Rangpur division 15.0°C, at Chuadanga in Khulna Division 15.2°C and at Barisal in Barisal Division 15.7°C.

Rainfall analysis and average temperature: -

Name of the Divisions	Name of the Stations	Total Rainfall in (mm)	Normal Rainfall in (mm)	Deviation in %	Total Rainy days	Average Max Humidity in %	Average Min Humidity in %	Average Max. temp in °C	Average Normal Max. temp in °C	Average Min. temp in °C	Average Normal Min. temp in °C
Dhaka	Dhaka	Trace	11	***	01	073	026	32.4	33.4	21.3	21.4
	Mymensingh	0	8	-100	00	096	046	31.2	31.6	18.3	19.6
	Faridpur	Trace	10	***	00	**	**	**	33.5	**	20.2
	Madaripur	0	6	-100	00	**	**	**	33.3	**	20.7
	Tangail	0	5	-100	00	090	033	32.2	32.7	17.8	19.6
Chittagong	Chittagong	0	10	-100	00	**	**	**	31.3	**	20.9
	Sitakunda	0	9	-100	00	**	**	**	31.7	**	20.3
	Rangamati	0	9	-100	00	092	011	035	32.6	019	20.1
	Cox'sBazar	0	6	-100	00	083	029	35.0	31.7	23.0	21.6
	Teknaf	0	1	-100	00	**	**	**	31.3	**	21.3
	Hatiya	0	12	-100	00	097	038	033	31.3	020	21.6
	Sandw ip	0	5	-100	00	094	033	33.4	30.8	19.2	22.3
	Kutubdia	0	6	-100	00	082	044	032	30.5	022	21.5
	Feni	0	9	-100	00	096	021	033	32.0	019	21.1
	M.Court	0	10	-100	00	091	034	32.6	32.1	20.6	21.3
	Chandpur	0	13	-100	00	084	036	33.5	32.4	19.8	21.1
	Comilla	Trace	9	***	01	**	**	**	31.5	**	20.2
	Sylhet	Sylhet	Trace	32	***	01	084	027	034	31.1	019
Srimongal		0	18	-100	00	098	017	32.6	32.3	15.0	17.9
Rajshahi	Rajshahi	Trace	5	***	01	093	029	33.2	34.1	17.6	18.5
	Bogra	0	4	-100	00	**	**	**	32.4	**	19.4
	Ishurdi	0	3	-100	00	095	019	32.9	33.8	17.5	18.8
Rangpur	Rangpur	1	6	-83	01	088	039	030	30.9	017	17.6
	Dinajpur	0	4	-100	00	095	024	31.0	31.6	17.2	17.7
Khulna	Khulna	Trace	7	***	01	094	038	33.1	33.8	20.1	21.0
	Jessore	0	10	-100	00	094	028	33.5	34.2	18.7	20.1
	Chuadanga	0	4	-100	00	093	032	32.9	34.5	17.3	19.4
	Satkhira	0	4	-100	00	099	028	32.8	33.8	19.8	21.1
Barisal	Barisal	Trace	6	***	01	098	038	33.3	33.1	19.3	20.8
	Bhola	0	7	-100	00	097	037	33.1	32.5	19.4	21.6
	Patuakhali	0	3	-100	00	096	034	34.1	32.9	20.4	21.5
	Khepupara	0	4	-100	00	092	036	034	32.3	029	22.2

N.B. Analyses contained in this bulletin are based on preliminary un-checked data. ** Data not received. *** Data not available.