



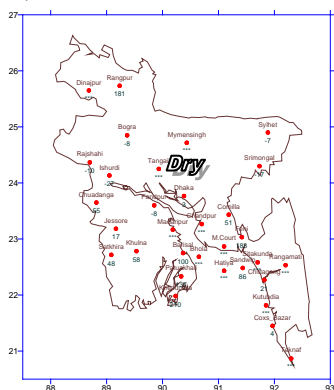
Government of the Peoples' Republic of Bangladesh  
Bangladesh Meteorological Department  
(Agro-meteorology Division)  
Meteorological Complex, Agargaon, Dhaka-1207.

Agm-3 (2)/2014/ 11

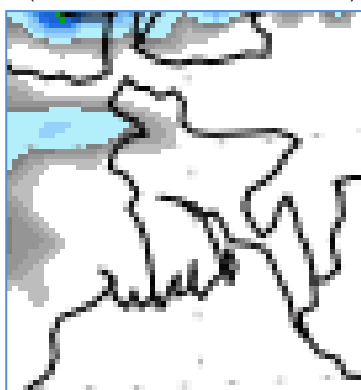
Issue date: 15-03-2015

**Forecast for the period: 15.03.2015 to 22.03.2015**

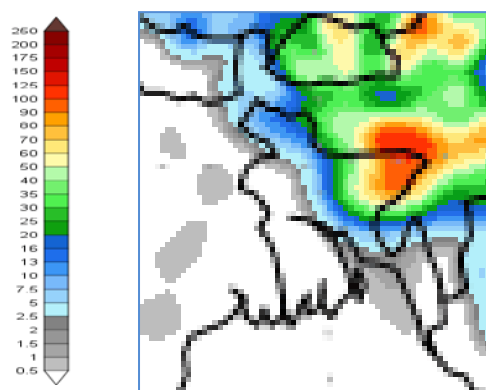
Spatial distribution of Rainfall  
(Period: 08-03-2015 to 14-03-2015)



Accumulative Rainfall forecast  
(Period:15-03-2015 to 21-03-2015)



Extended Outlook for accumulative rain  
(Period:22-03-2015 to 31-03-2015)



**Highlights:**

Country average of bright sunshine hour was 9.43 hours per day during the last week.

Country average of free water loss during the previous week was averaged 4.45 mm per day.

**Weather forecast and Advisory for the period of 15.03.2015 to 22.03.2015.**

Bright sunshine hour is expected to be between 8.0 and 9.0 hours per day during this week.

Average of free water loss during the next week is expected to be between 3.75 mm and 4.75 mm per day.

- Seasonal low lies over South Bay.
- Weather may remain mainly dry with partly cloudy sky with a chance of isolated light (4-10 mm) to moderate (10-22 mm) rain/thunder shower with temporary gusty or squally wind speed 30-40 km per hour or more at one or two places over northern part of the country during this period
- Gradual rise in day and night temperatures are expected over the country during this period.

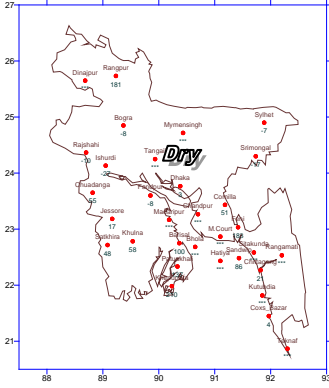
(Mahnaz Khan)  
Deputy Director  
For Director  
Phone: 8130305(Office)

N.B-Visit BMD Website – [www.bmd.gov.bd](http://www.bmd.gov.bd) for colored digital map of weekly rainfall forecast.

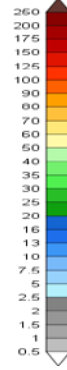
## Bengal Version

পূর্বাভাস, সময়: ১৫-০৩-২০১৫ থেকে ২২-০৩-২০১৫

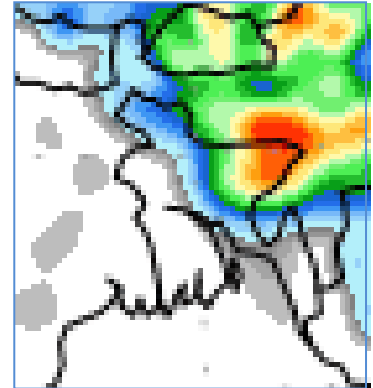
Spatial distribution of Rainfall  
(Period: 08-03-2015 to 14-03-2015)



Accumulative Rainfall forecast  
(Period: 15-03-2015 to 21-03-2015)



Extended Outlook for accumulative rain  
(Period: 22-03-2015 to 31-03-2015)



### প্রধান বৈশিষ্ট্য সমূহঃ-

গত সপ্তাহে দেশের দৈনিক উজ্জ্বল সূর্যকিরণ কালের গড় ৯.৪৩ ঘন্টা ছিল।

গত সপ্তাহে দেশের দৈনিক বাষ্পীভবনের গড় ৪.৪৫ মিঃ মিঃ ছিল।

### আবহাওয়া পূর্বাভাসঃ-১৫-০৩-২০১৫ থেকে ২২-০৩-২০১৫ ইং পর্যন্ত।

এ সপ্তাহে দৈনিক উজ্জ্বল সূর্য কিরণ কাল ৮.০ থেকে ৯.০ ঘন্টার মধ্যে থাকতে পারে।

আগামী সপ্তাহের বাষ্পীভবনের দৈনিক গড় মান ৩.৭৫ মিঃ মিঃ থেকে ৪.৭৫ মিঃমিঃ থাকতে পারে।

- মৌসুমী লঘুচাপটি দক্ষিণ বঙ্গোপসাগরে অবস্থান করছে।
- এ সপ্তাহে সারাদেশের আকাশ আংশিক মেঘলাসহ আবহাওয়া প্রধানতঃ শুষ্ক থাকতে পারে। সেই সাথে দেশের উত্তরাঞ্চলের দু'এক স্থানে বিক্ষিপ্ত ভাবে ঘন্টায় ৩০-৪০ কিঃমিঃ বা আরও অধিক বেগে দমকা/ঝড়ো হাওয়াসহ হালকা (৪-১০মিঃমিঃ) থেকে মাঝারী (১০-২২ মিঃমিঃ) ধরনের বৃষ্টি/ বজ্রবৃষ্টি হতে পারে।
- এ সময়ে দিন ও রাতের তাপমাত্রা ক্রমান্বয়ে বৃদ্ধি পেতে পারে।

(মাহ্নাজ খান)

উপ-পরিচালক

পরিচালকের পক্ষে

ফোনঃ ৮১৩০৩০৫(দপ্তর)

বিঃ দ্রঃ- পূর্বাভাসের ডিজিটাল map দেখতে visit করুন- [www.bmd.gov.bd](http://www.bmd.gov.bd)

### **Short Weather Description, Period: 08.03.2015 to 14.03.2015**

Weather was mainly dry over the country during the period.

Highest maximum temperature was recorded in Dhaka Division 30.4-34.8°C Chittagong Division 30.1-35.2°C, Sylhet Division 31.0-34.0°C, Rajshahi Division 30.0-35.4°C, Rangpur Division 29.2-33.2°C Khulna Division 30.7-34.8°C and Barisal Division 31.1-34.8°C.

Extreme maximum temperature was recorded at Faridpur in Dhaka Division 34.8°C, at Rangamati in Chittagong Division 35.2°C, at Sylhet in Sylhet Division 34.0°C, at Rajshahi in Rajshahi Division 35.4°C, at Dinajpur in Rangpur Division 33.2°C, at Jessore in Khulna Division 34.8°C and at Patuakhali in Barisal Division 34.8°C.

Lowest minimum temperature was recorded in Dhaka Division 13.0-19.3°C, Chittagong Division 12.5-21.0°C, Sylhet Division 9.8-18.0°C, Rajshahi Division 11.9-18.3°C, Rangpur Division 14.0-17.2°C, Khulna Division 11.5-19.0°C and Barisal Division 13.8-22.2°C

Extreme minimum temperature was recorded at Tangail & Faridpur in Dhaka Division 13.0°C, at Hatiya in Chittagong Division 12.5°C, at Srimongal in Sylhet Division 9.8°C, at Rajshahi in Rajshahi Division 11.9°C, at Dinajpur in Rangpur division 14.0°C, at Chuadanga in Khulna Division 11.5 °C and at Bhola in Barisal Division 13.8°C.

*Rainfall analysis and average temperature: -*

Name of the Divisions	Name of the Stations	Total Rainfall in (mm)	Normal Rainfall in (mm)	Deviation in %	Total Rainy days	Average Max Humidity in %	Average Min Humidity in %	Average Max. temp in °C	Average Normal Max. temp in °C	Average Min. temp in °C	Average Normal Min. temp in °C
<b>Dhaka</b>	Dhaka	0	12	-100	00	076	022	31.7	31.9	17.8	20.0
	Mymensingh	0	8	-100	00	096	040	30.9	30.5	16.1	18.2
	Faridpur	0	8	-100	00	095	023	32.7	31.9	15.6	18.9
	Madaripur	0	6	-100	00	098	020	32.7	32.2	14.8	19.3
	Tangail	0	9	-100	00	091	027	31.6	31.3	15.5	18.3
<b>Chittagong</b>	Chittagong	0	3	-100	00	**	**	033	30.4	019	19.7
	Sitakunda	0	3	-100	00	**	**	**	31.0	**	19.0
	Rangamati	0	3	-100	00	096	013	034	32.0	016	19.1
	Cox'sBazar	0	3	-100	00	083	034	33.2	31.1	19.8	20.4
	Teknaf	0	1	-100	00				30.8		20.1
	Hatiya	0	3	-100	00	097	035	033	30.5	016	20.2
	Sandw ip	0	5	-100	00	095	027	32.7	29.9	16.9	21.1
	Kutubdia	0	3	-100	00	089	038	031	29.9	019	20.5
	Feni	0	8	-100	00	**	**	**	31.2	**	19.8
	M.Court	0	5	-100	00	095	029	31.7	31.2	16.4	19.5
	Chandpur	0	6	-100	00	090	030	32.4	31.2	16.7	19.9
	Comilla	0	8	-100	00	095	034	031	30.6	016	19.2
<b>Sylhet</b>	Sylhet	0	17	-100	00	089	026	033	30.7	017	18.3
	Srimongal	0	13	-100	00	099	012	32.3	31.2	12.0	16.8
<b>Rajshahi</b>	Rajshahi	0	3	-100	00	095	023	32.7	32.2	14.7	17.1
	Bogra	0	6	-100	00	095	028	031	31.0	017	18.2
	Ishurdi	0	5	-100	00	097	013	32.6	32.0	14.9	17.2
<b>Rangpur</b>	Rangpur	0	5	-100	00	091	034	030	29.7	016	16.5
	Dinajpur	0	3	-100	00	098	019	31.3	30.3	15.5	16.6
<b>Khulna</b>	Khulna	0	4	-100	00	093	034	32.4	32.5	17.0	19.7
	Jessore	0	7	-100	00	096	024	32.7	32.8	15.9	18.7
	Chuadanga	0	3	-100	00	096	029	32.6	32.7	14.7	18.1
	Satkhira	0	6	-100	00	096	021	32.3	32.5	16.5	20.0
<b>Barisal</b>	Barisal	0	11	-100	00	099	028	32.3	32.0	15.7	19.7
	Bhola	0	4	-100	00	098	030	32.6	31.6	15.6	20.5
	Patuakhali	0	4	-100	00	096	029	33.0	32.0	16.6	20.3
	Khepupara	0	10	-100	00	100	021	033	31.5	017	20.8

N.B. Analyses contained in this bulletin are based on preliminary un-checked data. \*\* Data not received. \*\*\* Data not available.