



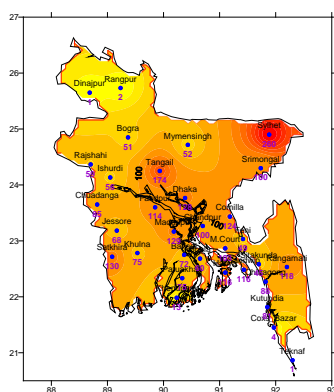
Government of the Peoples' Republic of Bangladesh
Bangladesh Meteorological Department
(Agro-meteorology Division)
Meteorological Complex, Agargaon, Dhaka-1207.

Agm-3 (2)/2014/ 14

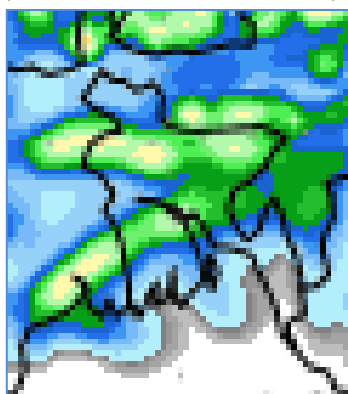
Issue date: 08-04-2015

Forecast for the period: 08.04.2015 to 14.04.2015

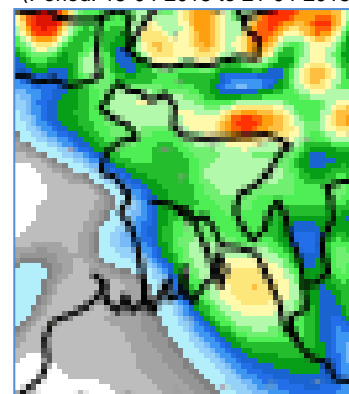
Spatial distribution of Rainfall
(Period: 01-04-2015 to 07-04-2015)



Accumulative Rainfall forecast
(Period: 08-04-2015 to 14-04-2015)



Extended Outlook for accumulative rain
(Period: 15-04-2015 to 21-04-2015)



Highlights:

Country average of bright sunshine hour was 5.38 hours per day during the last week.

Country average of free water loss during the previous week was averaged 3.43 mm per day.

Weather Forecast and Advisory for the Period of 08.04.2015 to 14.04.2015.

Bright sunshine hour is expected to be between 5.75 and 6.75 hours per day during this week.

Average of free water loss during the next week is expected to be between 3.25 mm to 4.25 mm per day.

- A low lies over West Bengal and adjoining area. Seasonal low lies over South Bay.
- Light (4-10 mm) to moderate (10-22 mm) rain/thunder shower with temporary gusty or squally wind speed 45-60 km per hour or more may occur at many places over Sylhet, Dhaka, Rajshahi and Khulna divisions and few places elsewhere over the country during the first half of this period. Rainfall activities may reduce during the second half of this period.
- Day and night temperatures may remain nearly unchanged over the country during the first half of this period. Day temperature rise by 1~3⁰C and slight rise in night temperature are expected over the country during the second half of this period.

(Mahnaz Khan)

Deputy Director

For Director

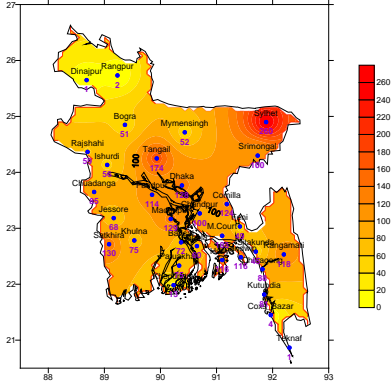
Phone: 8130305(Office)

N.B-Visit BMD Website – www.bmd.gov.bd for colored digital map of weekly rainfall forecast.

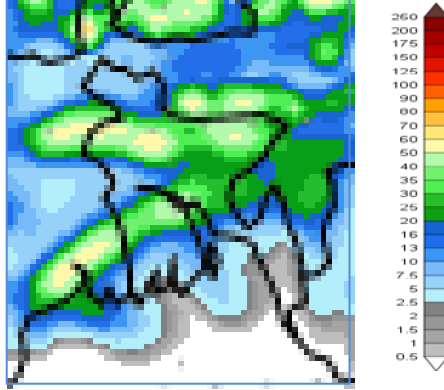
Bengal Version

পূর্বাভাস, সময়: ০৮-০৪-২০১৫ থেকে ১৪-০৪-২০১৫

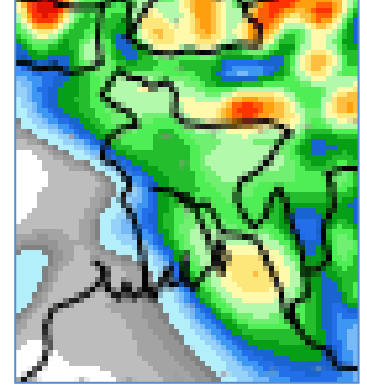
Spatial distribution of Rainfall
(Period: 01-04-2015 to 07-04-2015)



Accumulative Rainfall forecast
(Period: 08-04-2015 to 14-04-2015)



Extended Outlook for accumulative rain
(Period: 15-04-2015 to 21-04-2015)



প্রধান বৈশিষ্ট্য সমূহঃ-

গত সপ্তাহে দেশের দৈনিক উজ্জ্বল সূর্যকিরণ কালের গড় ৫.৩৮ ঘন্টা ছিল।

গত সপ্তাহে দেশের দৈনিক বাষ্পীভবনের গড় ৩.৪৩ মিঃ মিঃ ছিল।

আবহাওয়া পূর্বাভাসঃ-০১-০৪-২০১৫ থেকে ০৭-০৪-২০১৫ ইং পর্যন্ত।

এ সপ্তাহে দৈনিক উজ্জ্বল সূর্য কিরণ কাল ৫.৭৫ থেকে ৬.৭৫ ঘন্টার মধ্যে থাকতে পারে।

আগামী সপ্তাহের বাষ্পীভবনের দৈনিক গড় মান ৩.২৫ মিঃ মিঃ থেকে ৪.২৫ মিঃমিঃ থাকতে পারে।

- একটি লঘুচাপ পশ্চিমবঙ্গ ও তৎসংলগ্ন এলাকায় অবস্থান করছে। মৌসুমী লঘুচাপটি দক্ষিণ বঙ্গোপসাগরে অবস্থান করছে।
- এ সপ্তাহের প্রথমার্ধে সিলেট, ঢাকা, রাজশাহী ও খুলনা বিভাগের অনেক স্থানে এবং দেশের অন্যত্র কিছু কিছু স্থানে ঘন্টায় ৪৫-৬০ কিঃমিঃ বা আরও অধিক বেগে অস্থায়ী দমকা/ঝড়ো হাওয়াসহ হালকা (৪-১০মিঃমিঃ) থেকে মাঝারী (১০-২২ মিঃমিঃ) ধরণের বৃষ্টি/বজ্রবৃষ্টি হতে পারে। এসময়ের দ্বিতীয়ার্ধে বৃষ্টিপাতের পরিমাণ কমে যেতে পারে।
- এসময়ের প্রথমার্ধে দিন ও রাতের তাপমাত্রা প্রায় অপরিবর্তিত থাকতে পারে, দ্বিতীয়ার্ধে দিনের তাপমাত্রা ১~৩°সে. এবং রাতের তাপমাত্রা সামান্য বৃদ্ধি পেতে পারে।

(Handwritten signature)

(মাহ্নাজ খান)

উপ-পরিচালক

পরিচালকের পক্ষে

ফোনঃ ৮১৩০৩০৫(দপ্তর)

বিঃ দ্রঃ- পূর্বাভাসের ডিজিটাল map দেখতে visit করুন- www.bmd.gov.bd

Short Weather Description, Period: 01.04.2015 to 07.04.2015

Moderate to heavy rainfall was recorded at most places over the country during the period. Maximum rainfall 260 mm was recorded at Sylhet in Chittagong division which was 288% above normal and minimum rainfall 01 mm was recorded at Dinajpur in Rangpur division & Teknaf in Chittagong division which were 86% below normal.

Highest maximum temperature was recorded in Dhaka Division 27.0-35.0°C Chittagong Division 27.0-34.2°C, Sylhet Division 23.7-33.8°C, Rajshahi Division 29.0-38.2°C, Rangpur Division 27.2-33.5°C Khulna Division 31.2-37.2°C and Barisal Division 30.6-35.0°C.

Extreme maximum temperature was recorded at Madaripur in Dhaka Division 35.0°C, at Chandpur in Chittagong Division 34.2°C, at Sylhet in Sylhet Division 33.8°C, at Rajshahi in Rajshahi Division 38.2°C, at Dinajpur in Rangpur Division 33.5°C, at Chuadanga in Khulna Division 37.2°C and at Patuakhali in Barisal Division 35.0°C.

Lowest minimum temperature was recorded in Dhaka Division 17.8-24.0°C, Chittagong Division 17.6-27.5°C, Sylhet Division 18.2-21.2°C, Rajshahi Division 17.4-25.0°C, Rangpur Division 19.4-21.4°C, Khulna Division 19.5-26.6°C and Barisal Division 19.7-27.8°C

Extreme minimum temperature was recorded at Tangail in Dhaka Division 17.8°C, at Rangamati in Chittagong Division 17.6°C, at Sylhet & Srimongal in Sylhet Division 18.2°C, at Bogra in Rajshahi Division 17.4°C, at Rangpur & Dinajpur in Rangpur division 19.4°C, at Chuadanga in Khulna Division 19.58 °C and at Barisal in Barisal Division 19.7°C.

Rainfall analysis and average temperature: -

Name of the Divisions	Name of the Stations	Total Rainfall in (mm)	Normal Rainfall in (mm)	Deviation in %	Total Rainy days	Average Max Humidity in %	Average Min Humidity in %	Average Max. temp in °C	Average Normal Max. temp in °C	Average Min. temp in °C	Average Normal Min. temp in °C
Dhaka	Dhaka	128	23	457	06	090	055	32.4	34.1	21.9	23.4
	Mymensingh	52	14	271	04	095	072	29.5	32.0	20.5	21.7
	Faridpur	114	15	660	05	096	056	32.8	34.5	22.2	22.8
	Madaripur	129	22	486	06	099	057	32.7	33.8	21.6	23.0
	Tangail	174	17	924	04	095	059	32.1	33.4	20.1	21.7
Chittagong	Chittagong	88	15	487	06	**	**	031	31.6	21.7	22.8
	Sitakunda	45	21	114	06	**	**	**	31.8	**	23.0
	Rangamati	118	16	638	05	097	033	30.9	33.2	19.8	22.2
	Cox's Bazar	4	15	-73	02	092	069	32.2	32.3	24.9	23.5
	Teknaf	1	7	-86	01	096	060	032	31.6	24.4	23.1
	Hatiya	116	14	729	05	098	070	31.7	32.0	22.6	23.7
	Sandw ip	116	15	673	06	096	072	031	31.2	21.7	24.0
	Kutubdia	81	14	479	03	093	066	31.1	31.1	23.4	23.2
	Feni	49	20	145	07	100	059	31.0	32.1	21.0	23.1
	M.Court	103	20	415	05	098	066	32.0	32.5	22.1	23.1
	Chandpur	100	15	567	04	092	058	33.0	32.8	21.4	23.2
	Cornilla	124	27	359	06	096	068	31.4	32.0	20.4	22.2
Sylhet	Sylhet	260	67	288	06	097	067	28.6	31.2	19.5	20.6
	Srimongal	100	41	144	07	099	053	30.6	32.9	19.8	20.5
Rajshahi	Rajshahi	59	7	743	03	097	048	34.2	35.7	22.1	21.7
	Bogra	51	6	750	04	094	052	31.2	33.8	20.4	21.9
	Ishurdi	56	9	522	03	100	040	33.6	35.3	22.1	22.0
Rangpur	Rangpur	2	11	-82	04	093	062	29.2	32.1	20.4	20.0
	Dinajpur	1	7	-86	01	095	040	30.3	33.2	20.6	19.9
Khulna	Khulna	75	13	477	04	096	056	34.4	34.5	23.0	23.5
	Jessore	68	11	518	04	094	052	34.6	35.3	22.6	22.8
	Chuadanga	85	7	1114	03	095	051	34.3	35.1	22.6	22.2
	Satkhira	130	11	1082	03	096	047	33.9	34.7	23.9	23.7
Barisal	Barisal	72	17	324	04	100	066	33.0	33.4	23.0	23.2
	Bhola	60	18	233	06	098	064	033	32.8	23.5	23.6
	Patuakhali	75	14	436	04	098	059	33.9	33.1	23.3	23.5
	Khepupara	13	12	8	02	093	064	33.1	32.6	24.5	24.2

N.B. Analyses contained in this bulletin are based on preliminary un-checked data. ** Data not received. *** Data not available.