

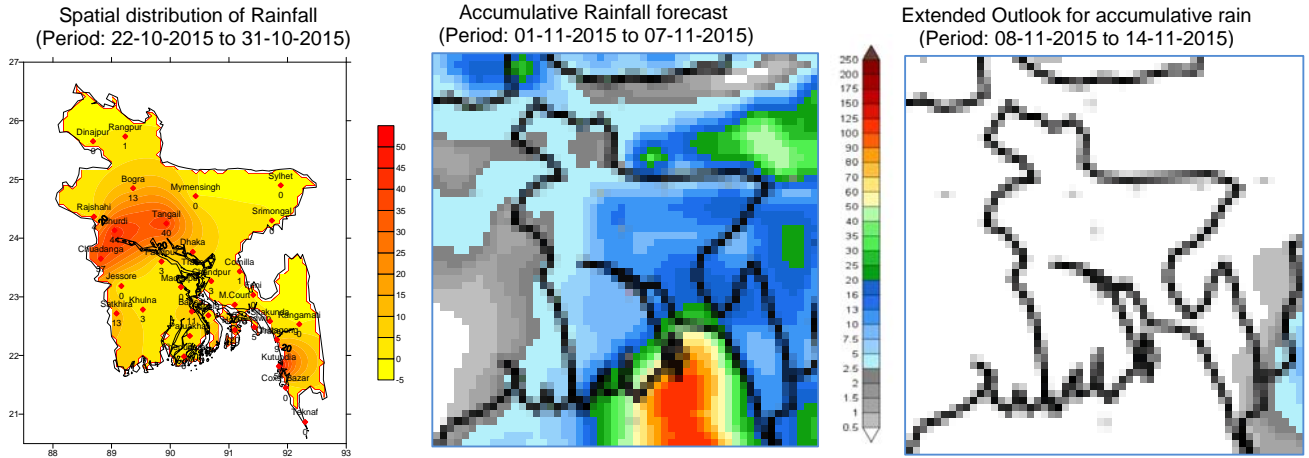


Government of the People's Republic of Bangladesh  
Bangladesh Meteorological Department  
(Agro-meteorology Division)  
Meteorological Complex, Agargaon, Dhaka-1207.

Agm-3 (2)/2015/ 41

Issue date: 01-11-2015

**Forecast for the period: 01.11.2015 to 07.11.2015**



**Highlights:**

Country average of bright sunshine hour was 7.38 hours per day during last week.

Country average of free water loss during the previous week was averaged 3.31 mm per day.

**Weather Forecast and Advisory for the Period of 01.11.2015 to 07.11.2015.**

Bright sunshine hour is expected to be between 6.25 to 7.25 hours per day during this week.

Average of free water loss during the next week is expected to be between 2.75 mm to 3.75 mm per day.

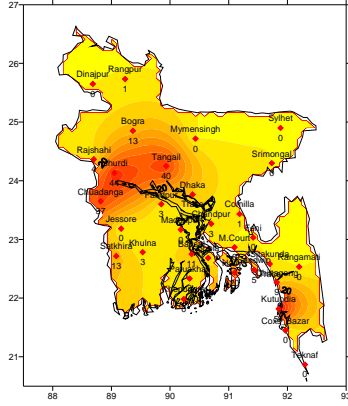
- The low over West-Central Bay off Andhra coast and adjoining area persists, extending its trough to North Bay. Under its influence deep convection is taking place over North Bay.
- Light (04-10 mm) to moderate (11-22 mm) rain/thunder shower with temporary gusty or squally wind may occur at many places over coastal region and one or two places elsewhere over the country during first half of this period.
- Weather may remain mainly dry with temporary partly cloudy sky over the country during the second half of this period.
- Slight fall in maximum and minimum temperature are expected over the country during this period.

(Mahnaz Khan)  
Deputy Director  
For Director  
Phone: 8130305(Office)

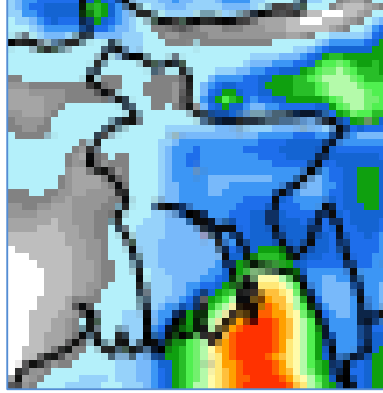
## Bengali Version

পূর্বাভাস, সময়: ০১-১১-২০১৫ থেকে ০৭-১১-২০১৫

Spatial distribution of Rainfall  
(Period: 22-10-2015 to 31-10-2015)



Accumulative Rainfall forecast  
(Period: 01-11-2015 to 07-11-2015)



Extended Outlook for accumulative rain  
(Period: 08-11-2015 to 14-11-2015)



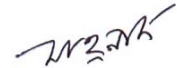
### প্রধান বৈশিষ্ট্য সমূহঃ-

গত সপ্তাহে দেশের দৈনিক উজ্জ্বল সূর্যকিরণ কালের গড় ৭.৩৮ ঘন্টা ছিল ।  
গত সপ্তাহে দেশের দৈনিক বাষ্পীভবনের গড় ৩.৩১ মিঃ মিঃ ছিল ।

### আবহাওয়ার পূর্বাভাসঃ- ০১-১১-২০১৫ থেকে ০৭-১১-২০১৫ ইং পর্যন্ত ।

এ সপ্তাহে দৈনিক উজ্জ্বল সূর্য কিরণ কাল ৬.২৫ থেকে ৭.২৫ ঘন্টার মধ্যে থাকতে পারে ।  
আগামী সপ্তাহের বাষ্পীভবনের দৈনিক গড় মান ২.৭৫ মিঃ মিঃ থেকে ৩.৭৫ মিঃমিঃ থাকতে পারে ।

- পশ্চিম-মধ্য বঙ্গোপসাগরে অবস্থানরত লঘুচাপটি অন্ধ্র উপকূল ও তৎসংলগ্ন এলাকায় অবস্থান করছে । এর বর্ধিতাংশ উত্তর বঙ্গোপসাগর পর্যন্ত বিস্তৃত । এর প্রভাবে উত্তর বঙ্গোপসাগরে গভীর সঞ্চালনশীল মেঘমালা সৃষ্টি হচ্ছে ।
- এ সময়ের প্রথমার্ধে উপকূলীয় এলাকার অনেকস্থানে এবং দেশের অন্যত্র দু'এক স্থানে অস্থায়ী দমকা/বাড়ো হাওয়াসহ হালকা (০৪-১০মিঃমিঃ) থেকে মাঝারী ধরনের (১১-২২ মিঃমিঃ) বৃষ্টি/বজ্রবৃষ্টি হতে পারে ।
- এ সময়ের দ্বিতীয়ার্ধে সারাদেশের আকাশ আংশিক মেঘলাসহ আবহাওয়া প্রধানতঃ শুষ্ক থাকতে পারে ।
- এ সময়ে সারাদেশের সর্বোচ্চ ও সর্বনিম্ন তাপমাত্রা সামান্য হ্রাস পেতে পারে ।



(মাহ্নাজ খান)

উপ-পরিচালক

পরিচালকের পক্ষে

ফোনঃ ৮১৩০৩০৫(দপ্তর)

বিঃ দ্রঃ- পূর্বাভাসের ডিজিটাল map দেখতে visit করুন- [www.bmd.gov.bd](http://www.bmd.gov.bd)

**Short Weather Description, Period: 22.10.2015 to 31.10.2015**

Light to heavy rainfall was recorded over the country during this period.

Maximum rainfall 54 mm was recorded at **Kutubdia** in Khulna division which was 54% above normal and minimum rainfall "Trace" mm was recorded at **Dhaka** in Dhaka division and at **sitakunda** in Chittagong division which was not measurable.

Highest maximum temperature was recorded in Dhaka Division 30.1-33.5°C, Chittagong Division 23.2-34.4°C, Sylhet Division 27.4-33.7°C, Rajshahi Division 29.5-33.5°C, Rangpur Division 29.6-33.2°C Khulna Division 27.8-34.6°C and Barisal Division 25.2-33.7°C.

Extreme maximum temperature was recorded at Faridpur in Dhaka Division 33.5°C, at Chandpur in Chittagong Division 34.4°C, at Sylhet in Sylhet Division 33.7°C, at Ishurdi in Rajshahi Division 33.5°C, Dinajpur in Rangpur Division 33.2°C, at Jessore in Khulna Division 34.6°C and at Patuakhali in Barisal Division 33.7°C.

Lowest minimum temperature was recorded in Dhaka Division 18.3-24.6°C, Chittagong Division 20.5-25.5°C, Sylhet Division 18.0-23.6°C, Rajshahi Division 18.5-23.9°C, Rangpur Division 18.9-24.6°C, Khulna Division 18.5-25.2°C and Barisal Division 20.0-24.6°C

Extreme minimum temperature was recorded at Tangail in Dhaka Division 18.3°C, at Rangamati in Chittagong Division 20.5°C, at Srimongal in Sylhet Division 18.0°C, at Ishurdi in Rajshahi Division 18.5 °C, at Dinajpur in Rangpur division 18.9°C, at Chuadanga in Khulna Division 18.5°C and at khepupara in Barisal Division 20.0°C.

***Rainfall analysis and average temperature: -***

Name of the Divisions	Name of the Stations	Total Rainfall in (mm)	Normal Rainfall in (mm)	Deviation in %	Total Rainy days	Average Max Humidity in %	Average Min Humidity in %	Average Max. temp in °C	Average Normal Max. temp in °C	Average Min. temp in °C	Average Normal Min. temp in °C
<b>Dhaka</b>	Dhaka	Trace	34	***	01	091	044	32.0	31.2	22.3	22.3
	Mymensingh	0	22	-100	00	097	060	033	30.9	023	21.3
	Faridpur	3	32	-91	01	096	055	33.0	30.9	23.7	22.4
	Madaripur	0	31	-100	00	097	048	32.9	31.4	23.5	22.1
	Tangail	40	46	-13	01	095	055	32.8	30.9	22.5	21.7
<b>Chittagong</b>	Chittagong	9	33	-73	01	**	**	31.4	31.1	23.9	22.8
	Sitakunda	Trace	25	***	02	**	**	**	31.7	**	22.3
	Rangamati	0	35	-100	00	099	039	32.3	31.1	22.9	22.4
	Cox'sBazar	0	66	-100	00	097	063	32.4	31.7	24.6	23.7
	Teknaf	0	49	-100	00	098	057	032	31.3	024	23.3
	Hatiya	20	33	-39	02	099	064	032	30.5	24.0	23.1
	Sandw ip	5	36	-86	01	097	060	32.1	30.6	23.2	22.9
	Kutubdia	54	35	54	02	**	**	**	30.9	**	23.3
	Feni	0	31	-100	00	096	064	32.6	30.9	22.2	21.5
	M.Court	0	57	-100	00	098	058	32.8	30.5	24.8	22.9
	Chandpur	3	25	-88	01	096	061	29.1	30.7	23.6	22.5
Comilla	1	32	-97	01	**	**	**	30.9	**	21.8	
<b>Sylhet</b>	Sylhet	0	40	-100	00	093	053	33.7	30.9	23.4	21.3
	Srimongal	0	31	-100	00	098	046	033	30.8	021	20.0
<b>Rajshahi</b>	Rajshahi	4	16	-75	02	099	059	32.5	30.8	22.5	21.0
	Bogra	13	27	-52	02	096	052	33.1	31.5	19.7	21.4
	Ishuardi	44	25	76	01	098	052	32.0	30.9	22.7	21.0
<b>Rangpur</b>	Rangpur	1	11	-91	01	094	055	031	29.9	022	20.5
	Dinajpur	0	13	-100	00	099	051	32.7	30.6	**	20.1
<b>Khulna</b>	Khulna	3	36	-92	02	097	051	32.3	31.2	22.6	22.4
	Jessore	0	28	-100	00	**	**	**	31.6	**	21.1
	Chuadanga	37	39	-5	03	097	061	32.4	31.2	23.1	21.5
	Satkhira	13	38	-66	02	098	052	32.8	31.5	24.0	21.5
<b>Barisal</b>	Barisal	11	47	-77	01	100	062	31.0	31.2	22.5	22.0
	Bhola	1	33	-97	01	099	058	033	31.1	024	22.3
	Patuakhali	2	50	-96	03	**	**	**	30.8	**	22.8
	Khepupara	0	63	-100	00	099	062	33.0	30.7	24.1	22.8

N.B. Analyses contained in this bulletin are based on preliminary un-checked data. \*\* Data not received. \*\*\* Data not available.