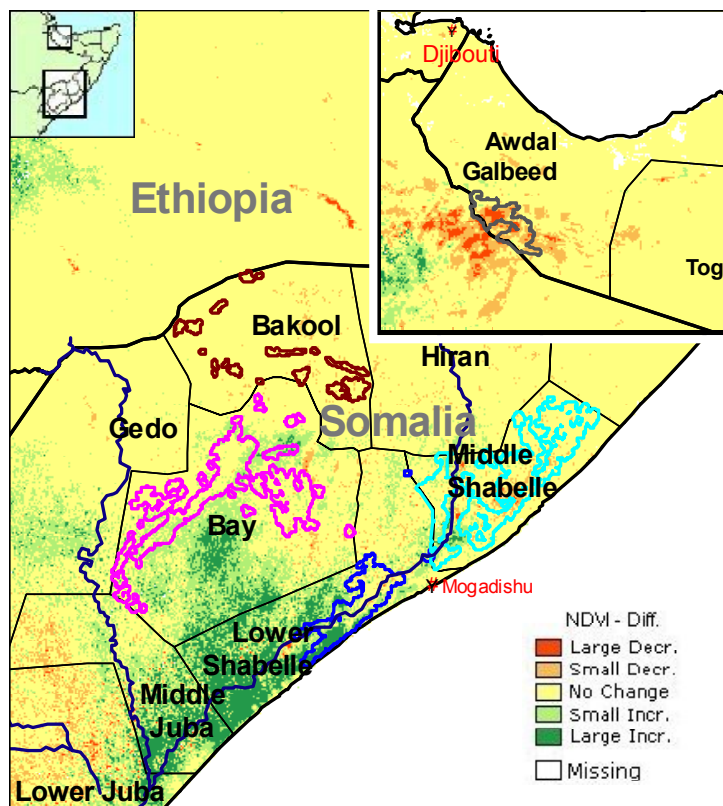


Agricultural areas



Normalized Difference Vegetation Index (NDVI)
Absolute difference w.r.t. previous year (Act. - Prev.)
Period: September 2004 Dekad: I

Highlights

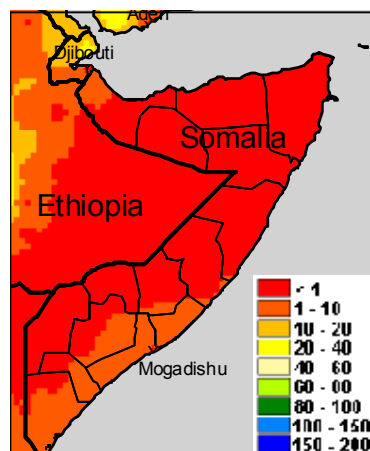
Rainfall

No significant rainfall is visible over Somalia.

Crops

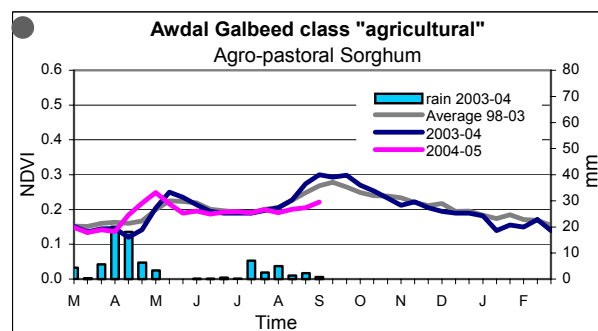
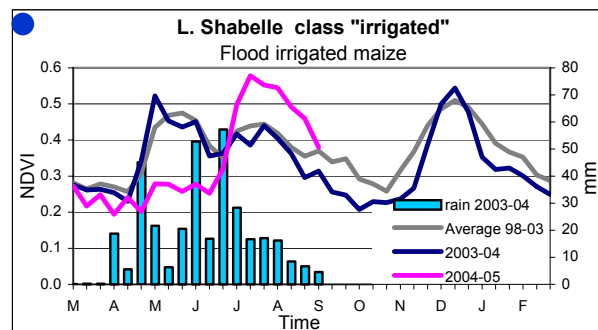
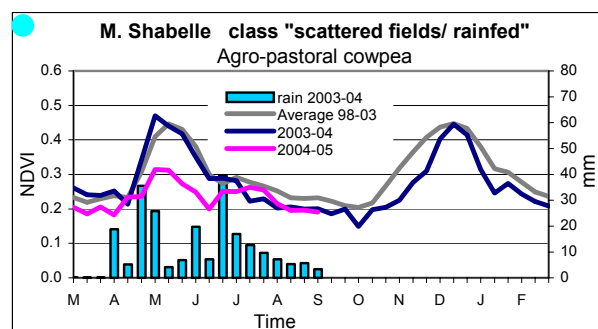
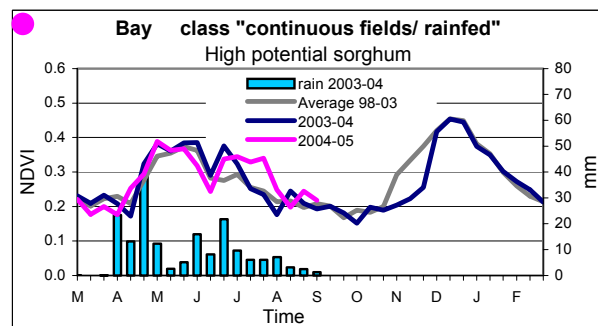
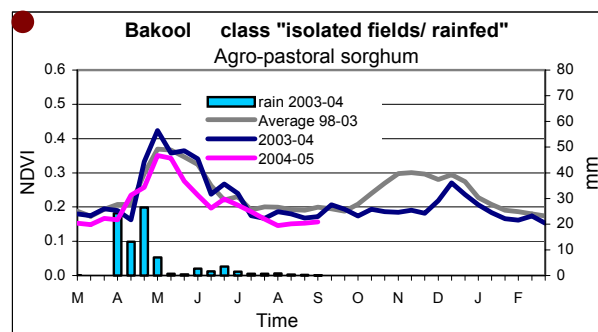
The greenness of agricultural vegetation is low after the end of the *Gu* season, with the exception of *Lower Shabelle* where the late rain led to a delayed crop cycle. The overall cereals production in Southern Somalia is significantly worse than in 2003.

In *Awdal Galbeed* the second crop season is delayed by the scarce rainfall received so far by this region.

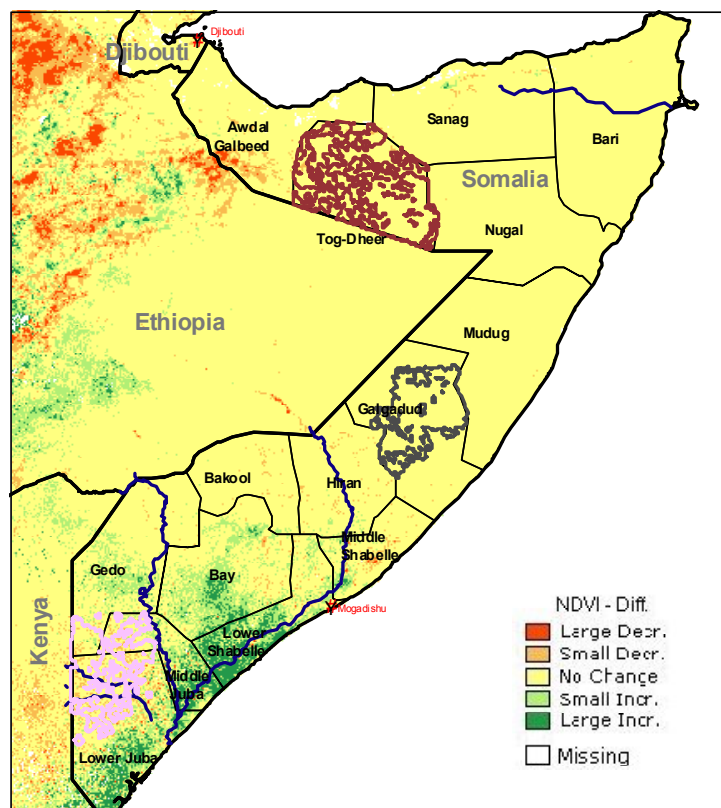


10-day cumulated rainfall
Period: September 2004 Dekad: I
Data derived from ECMWF model
Produced by METEOCONSULT

A technical description of the *Gu* production forecast can be found here:
<http://mars.jrc.it/bulletin/Somalia/2004/>



Pastoral areas



Normalized Difference Vegetation Index (NDVI)
 Absolute difference w.r.t. previous year (Act. – Prev.)
 Period: September 2004 Dekad: I

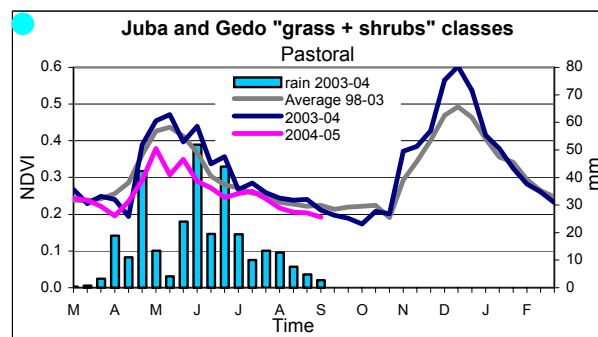
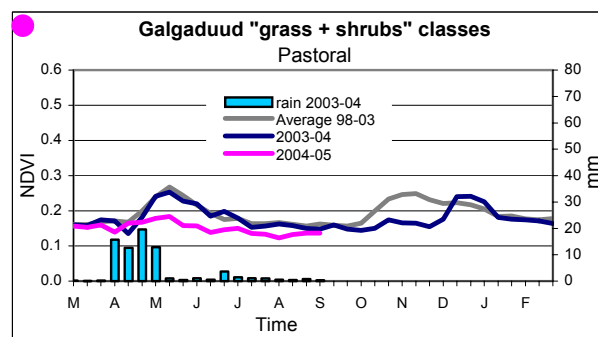
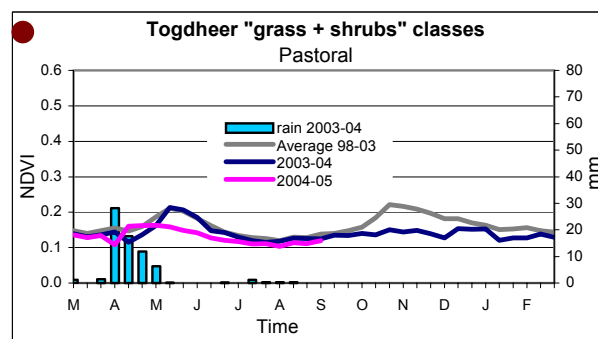
Highlights

Pastures

The dryness of the northern and central pastoral areas has not improved during the *Gu* season. Following at least two very dry years this situation has led to extremely hard conditions for livestock and pastoralists.

Legend: Food crop situation:

 Very bad;
  Bad;
  Near Normal;
  Good;
  Very Good



MARS-Food provides regular 10-daily updates on the progress of the 2004 crop seasons. This bulletin is available also through the "Crop and Rangeland Monitoring Network for the Greater Horn of Africa": <http://marsunit.jrc.it/Africa/>

All MARS-Food crop monitoring products are also accessible through the "Risk & Vulnerability" section of the JRC Digital Map Archive: <http://dma.jrc.it>

Comments and remarks for improvement of this bulletin are welcome.

© European Communities 2004

Disclaimer: The geographic borders are purely a graphical representation and are only intended to be indicative. These boundaries do not necessarily reflect the official EC position.

Legal Notice: Neither the European Commission nor any person acting on behalf of the commission is responsible for the use, which might be made of the following information.

Acknowledgements are due to the following organisations: ALTERNIA, FAO, FMA, METEOCONSULT, VITO and projects: AFRICOVER, FSAU.

Produced by: MARS Unit, IPSC, JRC-EC, TP266, I-21020 Ispra (VA), Italy

Contact: Jacques Delincé, Head of MARS Unit. Fax: +39-0332-789029, E-mail: thierry.negre@jrc.it, felix.rembold@jrc.it, <http://mars.jrc.it/food>

Download address: <http://mars.jrc.it/bulletin/somalia>