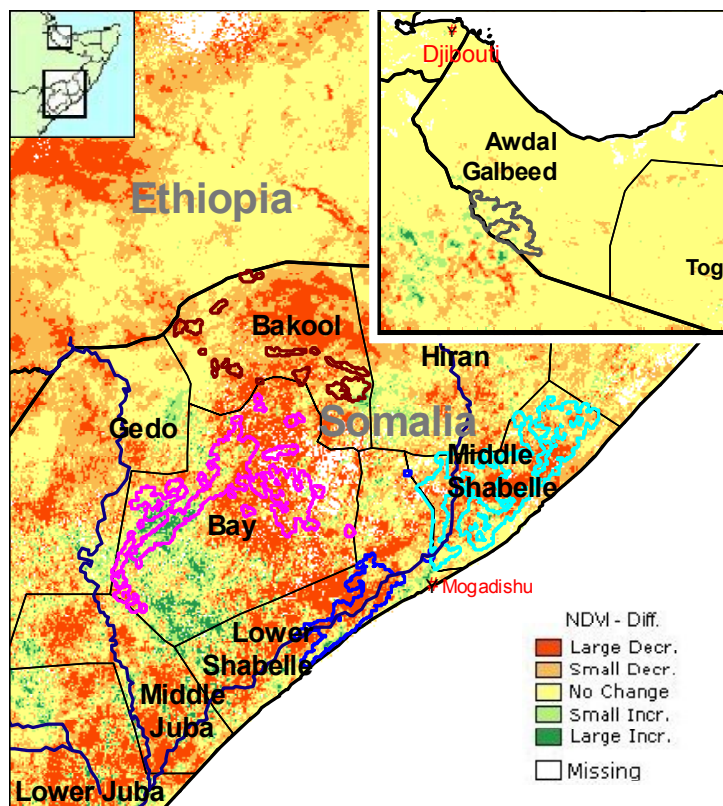
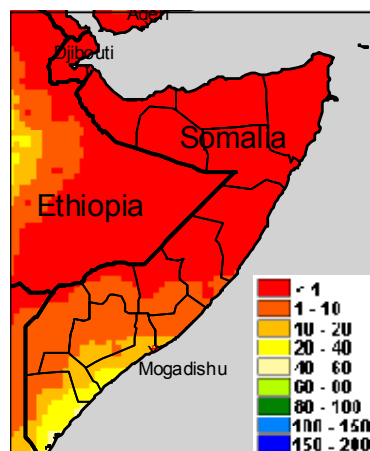


### Agricultural areas



**Normalized Difference Vegetation Index (NDVI)**  
Absolute difference w.r.t. previous year (Act. - Prev.)  
Period: June 2004 Dekad: I



**10-day cumulated rainfall**  
Period: June 2004 Dekad: II  
Data derived from ECMWF model  
Produced by METEOCONSULT

Legend: Food crop situation:  
Very bad; Bad; Near Normal; Good; Very Good

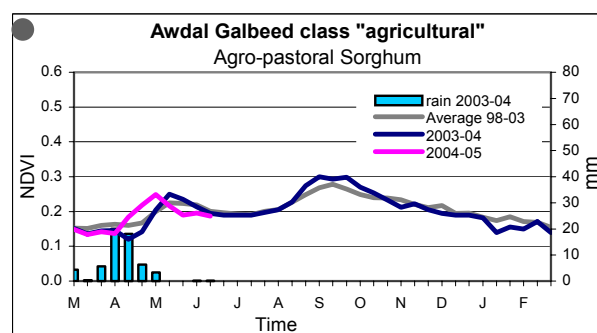
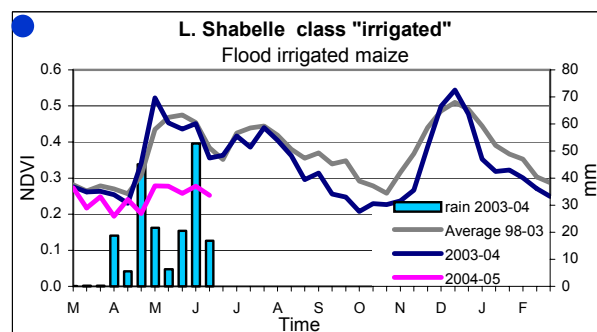
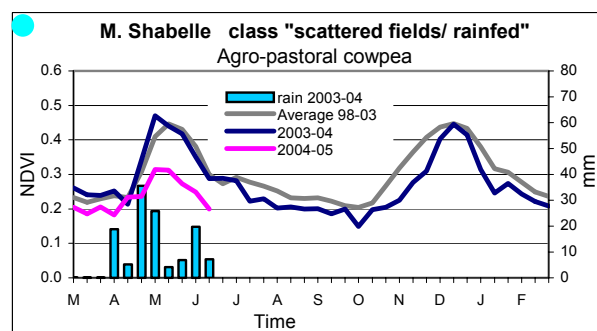
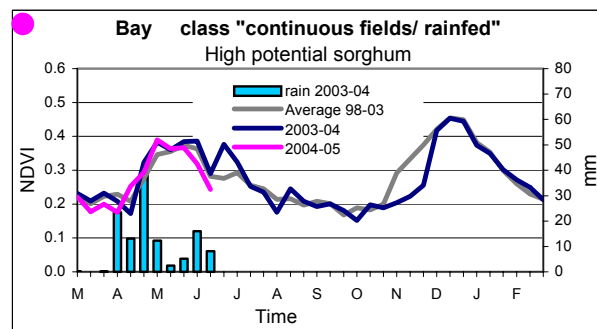
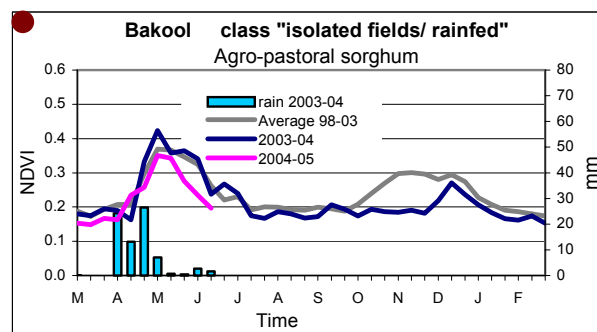
### Highlights

#### Rainfall

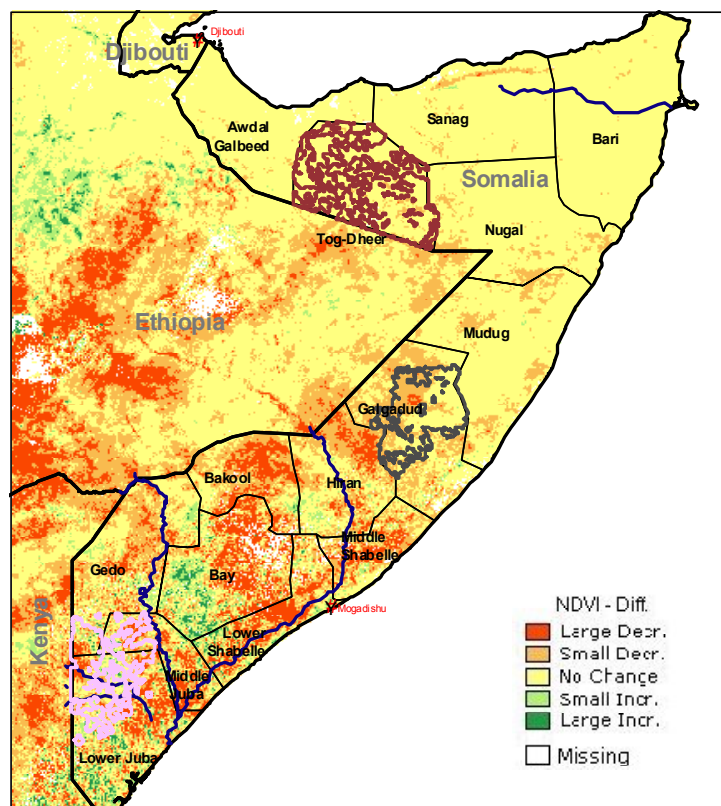
The ECMWF model shows some rainfall in the southern coastal areas of the country.

#### Crops

With the exception of Bay, the effects of short and insufficient *Gu* rains are clearly visible. The situation is particularly severe in the *Shabelle* regions where a nearly complete crop failure can be expected. The rainfall of this dekad comes fairly late for this *Gu* season and it is not clear whether it can still have a clear positive effect on food crops.



## Pastoral areas



**Normalized Difference Vegetation Index (NDVI)**  
 Absolute difference w.r.t. previous year (Act. – Prev.)  
 Period: June 2004 Dekad: II

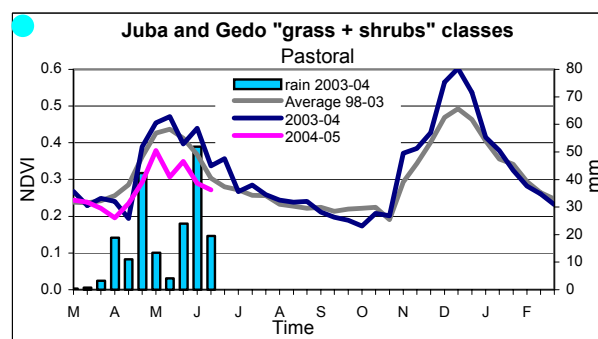
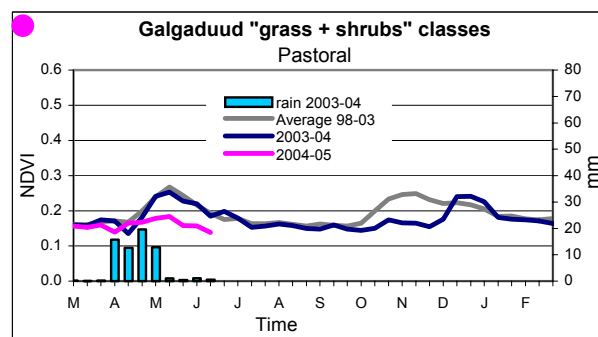
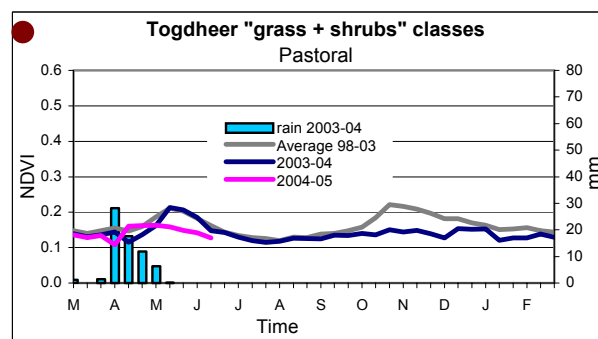
## Highlights

### Pastures

The dryness of the northern and central pastoral areas has not improved so far during the *Gu* season. Vegetation greenness is lower than normal in the Southern *Juba* regions.

Legend: Food crop situation:

 Very bad; 
  Bad; 
  Near Normal; 
  Good; 
  Very Good



MARS-Food provides regular 10-daily updates on the progress of the 2004 crop seasons. This bulletin is available also through the "Crop and Rangeland Monitoring Network for the Greater Horn of Africa": <http://marsunit.jrc.it/Africa/>

All MARS-Food crop monitoring products are also accessible through the "Risk & Vulnerability" section of the JRC Digital Map Archive: <http://dma.jrc.it>

Comments and remarks for improvement of this bulletin are welcome.

© European Communities 2004

**Disclaimer:** The geographic borders are purely a graphical representation and are only intended to be indicative. These boundaries do not necessarily reflect the official EC position.

**Legal Notice:** Neither the European Commission nor any person acting on behalf of the commission is responsible for the use, which might be made of the following information.

**Acknowledgements** are due to the following organisations: ALTERRA, FAO, FMA, METEOCONSULT, VITO and projects: AFRICOVER, FSAU.

Produced by: MARS Unit, IPSC, JRC-EC, TP266, I-21020 Ispra (VA), Italy

Contact: Jacques Delincé, Head of MARS Unit. Fax: +39-0332-789029, E-mail: [thierry.negre@jrc.it](mailto:thierry.negre@jrc.it), [felix.rembold@jrc.it](mailto:felix.rembold@jrc.it), <http://mars.jrc.it/food>

Download address: <http://mars.jrc.it/bulletin/somalia>